

THE FLORIDA STATE UNIVERSITY **FACT BOOK**



1986-87

ARCHIVES

LD

1771

F892

A46

1986/87





Archives
LD
1771
F892
A46
1986/87
CLSI

ROBERT MANNING
STROZIER LIBRARY

AUG 18 1987

Tallahassee, Florida

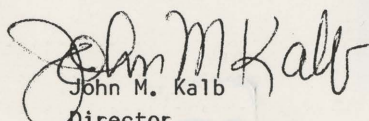
Budget and Analysis • Tallahassee, Florida 32306-1044 • 904-644-4203

The 1986-87 Florida State University Fact Book provides the most current data available for a general description of the activities of the university. Student information is current through the Fall 1986 semester, or the 1985-86 academic year for annual figures. Other data are as current as could be obtained at the time of publication. The purpose of this book is twofold: to provide the university community with useful reference information, and, to provide outside users not only with reference materials but also with useful and, hopefully, interesting facts about the university and region.

This book was prepared by the Institutional Research section of the Budget and Analysis Department. As you use this Fact Book, please advise this office of any additions or modifications which you feel would improve the contents of this book. Your comments are always welcome and suggestions for future content will be gratefully received.

Sincere thanks is extended to those offices that provided data or otherwise assisted in the production of this Fact Book.

Sincerely,


John M. Kalb
Director
Institutional Research

Cordially,

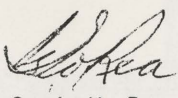

Grady W. Rea
Executive Director
Planning and Analysis

TABLE OF CONTENTS

Preface.....	ii
INTRODUCTION	
General Information.....	2
A Brief History of the State of Florida and the University.....	4
Mission Statement of the University.....	5
Governing Boards.....	6
Presidents of the University.....	7
Faculty Senate.....	8
Honorary Degrees Awarded.....	9
Panama City Campus.....	11
Operating Budget.....	14
Education and General Allocated Resources by Function.....	15
FSU Departments/Programs Included in CIP Discipline Categories, Fall 1986.....	16
Academic Degree Program Inventory, January, 1987.....	20
STUDENTS	
Student Characteristics, Fall 1986.....	29
Headcount by Department and School/College for Fall Terms.....	33
Student Headcount Enrollment by Level, Fall 1986.....	37
Student Credit Hour Enrollment by School and College, Annual FTE.....	38
Student Headcount by Discipline and Level, Fall 1986.....	50
Geographical Origin of Students by Florida County, Fall Terms.....	52
Student Headcount Enrollment by Florida County of Origin, Fall 1986.....	54
Geographical Origin of Students by State, Fall Terms.....	55
Student Headcount Enrollment by State of Origin, Fall 1986.....	57
Geographical Origin of Students, Fall 1986.....	58
Student Headcount Enrollment by Residence, Fall 1986.....	59
Degrees Awarded by Schools and Colleges: Cumulative for Academic Year.....	60
Florida Community/Junior College Students Transferring to FSU, Fall Terms.....	62
State Fundable Student Credit Hours, Fall 1986.....	63
Enrollment History: Headcount by Level (Fall Terms Since 1936).....	66
Student Credit Hours by Course Level and Class Level, Fall 1986.....	67
FACULTY AND STAFF	
Faculty Characteristics.....	69
State-Funded Filled FTE Faculty Positions.....	70
Mean Salary by Rank for Nine-Month Faculty, 1986-87.....	71
Faculty Distributions: Tenured and by Rank.....	72
Robert O. Lawton Distinguished Professors.....	73
President's Teaching Awards.....	74
AMOCO/Standard Oil Foundation Awards.....	75
Developing Scholar Awards.....	76
Special Faculty Awards.....	77
Eminent Scholar Chairs and Other Endowed Chairs.....	78
Ross Oglesby Award.....	79
Full-Time Employees by Job Category, 1986-87.....	80
Exemplary Service Awards for Career Service Employees.....	81

TABLE OF CONTENTS

SUPPORT SERVICES

Institutes and Research Centers.....	83
University Libraries.....	86
Center for Professional Development and Public Service.....	87
Supercomputer Computations Research Institute.....	91
Student Affairs.....	92
University Publications.....	94
Intercollegiate Athletics.....	96
Glossary.....	97

ADMINISTRATIVE STRUCTURE

FSU Organizational Chart.....	Centerfold
Organizational Structure & Incumbent.....	Reverse of Centerfold



INTRODUCTION



General Information

The Florida State University is a public, fully accredited, coeducational institution of the nine-member State University System of Florida. Located in Tallahassee, Florida's capital city, the University affords students and faculty opportunities for interaction with state and Federal agencies for internships, research, and part-time employment, as well as a myriad of social, cultural, and recreational activities. The main campus is located on 347 acres in Tallahassee with other facilities located in Leon, Bay, and Franklin counties.

With fifteen colleges and schools, students may take courses of study leading to the baccalaureate degree in 92 fields, to the master's degree in 93 fields, and to the doctorate in 65 fields. The academic divisions are the Colleges of Arts and Sciences, Business, Communication, Education, Engineering, Home Economics, Law, and Social Science; and the Schools of Criminology, Library and Information Studies, Music, Nursing, Social Work, Theatre, and Visual Arts.

Over 78 percent of the students enrolled at the university attend full time. Undergraduates comprise 74 percent and graduate students 19 percent of the total enrollment of 23,138 students in the fall of 1986. The average age of all students is 23; of undergraduates, 21; and of graduate students, 31.

The State University System (SUS), of which the Florida State University is a member, operates under the supervision of the Florida Department of Education. The Florida State University is governed through the 13-member State Board of Regents which is composed of the Commissioner of Education (ex officio), and, 12 Florida citizens, including one SUS student.

The Board of Regents is responsible for adopting system-wide rules and policies; planning for the system's future needs and development; reviewing and evaluating instructional, research, and service programs at the universities; coordinating program development among the nine member universities; and monitoring the fiscal performance of the universities.

Research and Special Programs

The Florida State University has built a reputation as a strong research center in both the sciences and the humanities. It is expected that more than \$30 million in external funds will be generated this year by the university faculty and administration as supplements to state funds used for research. These external funds are in the form of contracts and grants from private foundations, industries, and government agencies, and are used to support research, improve research facilities, and provide stipends for graduate students.

Florida State is well known in the natural sciences for its basic research programs in biology, chemistry, meteorology, nuclear science, oceanography, physics, and psychology. Strong basic and applied research programs are also found in computer science, geology, mathematics, and statistics.

As a nationally recognized center of excellence in graduate training in the visual and performing arts, the University offers professional training in music, theatre and dance performance and theory.

In addition to on-campus programs, the university offers a wide variety of overseas study opportunities for students during the regular academic year, as well as in special summer programs. These include the Florence, Italy and London, England programs during the academic year;

GENERAL INFORMATION

the Florence Summer Program; Panama Canal Branch Campus; Hospitality Administration Summer Program in Switzerland; Center for Yugoslav-American Studies, Research, and Exchanges; Summer Term in law at Oxford, England; San Jose, Costa Rica Summer Program; and field excavations in Chianti, Italy.

Florida State University has both an Air Force and an Army Reserve Officers' Training Corps (ROTC) program. FSU students may apply for admission to the Navy ROTC Program offered through Florida Agricultural and Mechanical University.

The Florida State Computing Center, one of the largest research computing centers in the South, supports scientific research on campus with its Control Data Corporation Cyber 170-760 and 170-730 computers, and a complete PLATO system of computer-based instruction on another Cyber 730.

The FSU Supercomputer Computations Research Institute serves supercomputing research and training needs of faculty and students in Florida and offers services to researchers throughout the country through a satellite-based communications network. The installation of a CDC Cyber 205 in 1985 made the University the country's fifth university to have on-campus access to a supercomputer. In 1987, the Institute became the nation's first recipient of the ETA-10 Supercomputer.

Robert Manning Strozier Library, with over 1.6 million books and periodicals and a special microfilm collection of over 2.7 million microforms, complements the research facilities on campus.

Among the special programs which have won national or international distinction in research are the Program in Nuclear Research, Institute for Molecular Biophysics, FSU Marine Laboratory, Center for Music Research, Learning Systems Institute, FSU Proton-Induced X-Ray Emission (PIXE) Laboratory, and FSU Institute of Science and Public Affairs.

Seal of The Florida State University

The seal of The Florida State University, which was designed by the combined talents of the Arts and Classics Departments, had its origins in the first decade of the 20th century during the administration of President Albert A. Murphree.

The torches of the seal symbolize the fire given to man by the Greek God Prometheus. This fire enabled man to elevate himself above the animals and become human. The torches of the FSU seal symbolize the purpose of the University: the passing on of knowledge from generation to generation. The torch on the left is Vires: strength of all kinds, physical, moral and intellectual. The center torch is Artes: that which we acquire--knowledge which transcends skill, the appreciation of beauty. The torch on the right is Mores: customs, character and tradition. Through these three ideals the student is educated physically, mentally and morally.

The seal first appeared on the cover of the 1910-11 catalogue.

Source: "Florida State College for Women: Notes on the Formative Years,"
by William G. Dodd

The State of Florida and the City of Tallahassee

Thousands of years of Indian occupancy preceded the European discovery the Florida peninsula. An estimated 100,000 native Americans were living here at the time of its discovery by Juan Ponce de Leon in early 1513. As Ponce de Leon's arrival coincided with the Spring Pascua Florida festivities in Spain, he named the new land "Florida," which meant "filled with flowers."

Prior to 1821, Florida had consisted of two Spanish colonies that were ceded to Great Britain in the settlement of the Seven Years' War (1756-1763). In 1821 President James Monroe nominated Andrew Jackson as territorial governor. One of the new governor's first acts was to organize the territory into two counties, Escambia and St. Johns, with the Suwannee River serving as the dividing line. (In 1822, two more counties were added--Duval in the east and Jackson in the west.) The legislative council met at Pensacola, the capital of West Florida, in 1822, and at St. Augustine, the former capital of East Florida, in 1823. As these two chief settlements of the territory were separated by 400 miles of wilderness, it was desirable to select a central site as a capital. Two commissioners appointed by Governor William Pope Duval selected the then uninhabited area known as Tallahassee as the site for the permanent capital and the governor proclaimed it the capital on March 4, 1824. The territorial council met there for the first time in November of that year. Tallahassee had been the site of Indian settlements prior to and during the Colonial Era. Its name is a Creek Indian phrase generally believed to mean "old town" or "old fields." Florida was admitted to the union as the twenty-seventh state on March 3, 1845.

The Florida State University

Plans for higher education in Florida began in 1823 when the legislative council of the territory set aside for sale one township in East Florida and one in West Florida to support seminaries. In 1851, the State Legislature authorized the all-male Seminary West of the Suwannee. The property of the Florida Institute in Tallahassee (created in 1851) was offered to the state as a site for its new western seminary. The Legislature accepted the offer and the first classes were held in 1857. In 1858 females were admitted in a separate department called the Female Institute which operated, with its own Principal, until 1882 when the Seminary became coeducational.

During the Civil War, the 1863 Legislature passed an act changing the institution's name to The Florida Military and Collegiate Institute. Cadets from this institute fought in the Battle of Natural Bridge south of Tallahassee in 1865. As a result of this participation, Florida State University's ROTC unit is entitled to add a battle streamer to its ROTC unit flag. It is one of only three university ROTC units in the U.S. to have this distinction. In summer 1865, Federal troops occupied the Seminary buildings. The Female Department, inactive during the war, resumed activity in 1866. In 1901 the name of The West Florida Seminary was changed to the Florida State College, and the first master's degree was offered the following year.

In 1905, through the Buckman Act, the Legislature reorganized higher education in Florida, establishing a school for male students in Gainesville, and a school for female students in Tallahassee. Florida State College in Tallahassee became the female school and was named the Florida Female College. This name was objectionable to friends and supporters of the college, thus in 1909 it was renamed the Florida State College for Women (F.S.C.W.).

In 1946, a flood of applicants seeking admission to the University of Florida created a crisis situation as the number desiring admission was one-third more than could be accommodated. As a result, a branch accommodating 500 men was opened in Tallahassee at Dale Mabry Field, a deactivated army installation. In 1947, the Legislature took further action and designated both the University of Florida and the Florida State College for Women as coeducational, at the same time changing the name of F.S.C.W. to The Florida State University.

THE MISSION STATEMENT OF THE FLORIDA STATE UNIVERSITY

The Florida State University is a comprehensive, graduate-research university offering undergraduate, graduate, advanced graduate and professional programs of study, conducting extensive research, and providing service to the public. Its primary role is to serve as a center for advanced graduate and professional studies while emphasizing extensive research and providing excellence in undergraduate programs.

In accordance with the university's mission, faculty members have been selected for their commitment to excellence in teaching, their ability in research, and their interest in public service. Among the faculty are recipients on many national and international honors, including six members of National Academy of Sciences.

Given its history, location, and accomplishments, the university does not expect major changes in its mission during the next decade. Rather, it sees further refinement of that mission with concentration on quality in its reaching research, and public service. Areas upon which the university has established its reputation have been identified for special emphasis and quality improvement. Included in the natural sciences are the four components of the Science Development Grant--physics, chemistry, psychobiology, and statistics--together with the physical, biological, and mathematical sciences closely related to them. Enhancement of the fine and performing arts began with the establishment of the Center for Music Research in the already prestigious School of Music includes strengthened programs in Theatre, Dance and the Visual Arts. Within the humanities, the Departments of English, Philosophy, Religion, and Humanities are being strengthened. Special emphasis in the policy sciences has been directed to the College of Social Sciences' Departments of Economics, Geography, Political Science, Public Administration, Sociology, Urban and Regional Planning, and to its Policy Science Center and public policy components of the School of Criminology, the School of Social Work, and College of Education.

The university's location in the State's capital provides great opportunity for service and interaction between governmental agencies and the social science and professional schools.

As a major comprehensive residential state university, Florida State attracts students from every county in Florida, every state in the nation, and 112 foreign countries. The university has a commitment to high admission standards that ensure quality in its student body, which currently include some 150 National Merit and National Achievement scholars, as well as other students with superior creative talents. The majority of students are pursuing full-time course of study in normal progression from high school or undergraduate institutions. Graduate students comprise 20 percent of the student body. The median age of all students is 21, and only about 21 percent, mostly graduate students, are over 25 years old.

The Florida State University - Strategic Planning and Budgeting The Strategic Plan April 1986

* first adopted 1982, and readopted March 1986. (This statement, quoted verbatim, contains information that was correct when written; specific numbers, ages, and averages cited may have changed slightly since then.)

GOVERNING BOARDS

STATE BOARD OF EDUCATION

Robert Martinez	Governor
George Firestone	Secretary of State
Robert Butterworth	Attorney General
William D. Gunter, Jr.	State Treasurer and Insurance Commissioner
Gerald Lewis	Comptroller
Doyle Conner	Commissioner of Agriculture
Betty Castor	Commissioner of Education

FLORIDA BOARD OF REGENTS

T. Terrell Sessums, Chairman	Tampa
Raleigh Greene, Vice Chairman	St. Petersburg
C. DuBose Ausley	Tallahassee
J. Hyatt Brown	Daytona Beach
Cecilia Bryant	Jacksonville
Betty Castor, Commissioner of Education	Tallahassee
Robin Gibson	Lake Wales
William F. Leonard	Ft. Lauderdale
Raul P. Masvidal	Miami
John Robert Middlemas	Panama City
Joan Dial Ruffier	Orlando
Frank P. Scruggs, II	Miami
Susan Pimentel Ajoc, Student Regent	University of North Florida

CHANCELLOR, STATE UNIVERSITY SYSTEM
Charles Reed



Source: Board of Regents

PRESIDENTS OF THE UNIVERSITY SINCE 1887

George Edgar	1887 - 1892
Alvin Lewis	1892 - 1897
Albert A. Murphree	1897 - 1909
Edward Conradi	1909 - 1941
Doak S. Campbell	1941 - 1957
Albert B. Martin (Acting President)	1957
Robert M. Strozier	1957 - 1960
Milton W. Carothers (Acting President)	1960
Gordon W. Blackwell	1960 - 1965
John E. Champion (Acting President)	1965
John E. Champion	1965 - 1969
Stanley Marshall (Acting President)	1969
Stanley Marshall	1969 - 1976
Bernard F. Sliger (Interim President)	1976 - 1977
Bernard F. Sliger	1977 -

Note: From 1857 to 1887, the school's Executive Officer was called the Principal. Since 1887 the title has been the President.

Source: Office of the President

President Bernard F. Sliger

The current President of the University, Bernard F. Sliger, a native of Trout Creek, Michigan, received a Bachelors, Masters, and Doctorate in Economics from Michigan State University. He taught at Louisiana State University and was the Executive Director of the Louisiana Coordinating Council for Higher Education prior to his appointment at the Florida State University. President Sliger was named Executive Vice President of the Florida State University in 1972, he was appointed acting President in 1976 and named President of the university in 1977.

FACULTY SENATE

The Faculty Senate, the basic legislative body of the University, is composed of at least one elected representative from each college or school and one representative each from the Librarians and the Developmental Research School. Except for representatives of Librarians and the Developmental Research School, only full-time instructors, assistant professors, associate professors, and professors are eligible for representation in, and election to, the Faculty Senate. Senators serve two-year terms which begin after the regular May meeting of the Senate in the election year. The President of the Faculty Senate is elected by the membership to serve for a one-year term. The Steering Committee is composed of seven members elected by the voting membership of the Faculty Senate to staggered two-year terms and the President of the Faculty Senate, who chairs it.

The Faculty Senate formulates measures for maintaining a comprehensive educational policy and for maximum use of the University's intellectual resources. It determines and defines University-wide policies on academic matters, including Liberal Studies policy, admission, grading standards, and requirements for the awarding of degrees. It may also formulate opinions on any subject of interest to the University and adopt resolutions thereon.

Presidents of the Faculty Senate

Wayne C. Minnick	1973-74
Fred L. Standley	1974-75
Wayne C. Minnick	1975-76
James E. Pitts	1976-77
Gregory R. Choppin	1977-78
James E. Pitts	1978-79
Clifford K. Madsen	1979-80
Fred L. Standley	1980-81
Katherine B. Hoffman	1981-82
H. Frederick Kreimer	1982-83
Steve Edwards	1983-85
*H. Frederick Kreimer	1984-85
Merrill B. Hintikka	1985-87
**James E. Pitts	1987

1986-87 Steering Committee

<u>Name</u>	<u>Department</u>	<u>Term Expires</u>
Merrill B. Hintikka	Philosophy	Chairman
Marie E. Cowart	Nursing	1987
John J. Fenstermaker	English	1988
Clifford K. Madsen	Music	1987
Elizabeth B. Mann	Library and Information Studies	1988
**James E. Pitts	Finance	1988
Fred L. Standley	English	1988
DeWitt L. Sumners	Mathematics	1987
**Martin Roeder	Biological Science	----

*Elected Senate President for the remainder of Dr. Edwards' term when Edwards became the Dean of the Faculties.

**After the death of Dr. Hintikka on January 1, 1987, Dr. Pitts was authorized to fulfill functions of the President and Dr. Roeder was authorized to function as a temporary member of the Steering committee for the remainder of Dr. Hintikka's term.

HONORARY DEGREES AWARDED

Conferred by
The Florida State University and The Florida State College for Women

<u>DATE</u>	<u>NAME</u>	<u>FIELD OF DISTINCTION</u>	<u>DOCTORIAL TITLE</u>
1912	Rowena Longmire	Education	Master of Arts
1935	Ruth Bryan Owen Rhode	Public Service	Laws
1950	Henri Bonnet	International Affairs	Humane Letters
	Mark Frederick Boyd	Medicine	Science
1952	Wouter Bleeker	Science	Science
1955	William Morrison Robinson, Jr.	History	Humanities
1956	Millard Fillmore Caldwell	Public Service	Laws
	LeRoy Collins	Public Service	Laws
	William George Dodd	Education	Literature
	Spessard Lindsey Holland	Public Service	Laws
	Philip Wylie	Literature	Literature
1957	Doak Sheridan Campbell	Education	Laws
	Ernst von Dohnanyi	Music	Music
	George A. Smathers	Public Service	Laws
1959	J. Velma Keen	Business	Laws
1960	Cyril O. Houle	Education	Laws
1961	Glen T. Seaborg	Science	Science
	Vivian Ahlsweh Williams	Literature	Literature
1962	Leonard J. Brass	Science	Science
	Thomas B. Swann	Business/Public Service	Laws
1963	Pablo Casals	Music	Music
	Luther H. Hodges	Public Service/Business	Laws
	Karl Zerbe	Art	Fine Arts
1964	Cecil Farris Bryant	Public Service	Laws
	Edwin A. Menninger	Science	Science
	Dorothy Barclay Thompson	Journalism	Humane Letters
1965	Arthur Statan Adams	Science/Public Service/ Education	Laws
	J. J. Daniel	Law/Business	Laws
	Robert J. Van de Graaff	Science	Science
1968	Michael E. DeBakey	Medicine	Science
	Lamar Dodd	Art/Education	Fine Arts
	Robert L. Shaw	Music	Music
1969	Lucius D. Battle	Public Service	Humane Letters
	Andres Segovia	Music	Music
1970	Alan S. Boyd	Public Service	Laws
	Audrey Wood Liebling	Literature	Humane Letters
	Gregor Piatigorsky	Music	Music
	Nelson Poynter	Public Service	Humane Letters
	Paul M. Rudolph	Architecture	Fine Arts
1971	Edwin V. Komarek	Science	Science
1972	Wilbur J. Cohen	Education	Humanities
	John Mackay Shaw	Poetry	Humanities

HONORARY DEGREES AWARDED

Conferred by
The Florida State University and The Florida State College for Women

<u>DATE</u>	<u>NAME</u>	<u>FIELD OF DISTINCTION</u>	<u>DOCTORIAL TITLE</u>
1973	Karl Dietrich Bracher	History	Humane Letters
	William D. McElroy	Science	Science
	Allen Morris	Public Service	Humane Letters
	Julia V. Morton	Science	Science
1975	Philip Handler	Science	Humanities
	Helen Hayes MacArthur	Theatre	Humane Letters
	King Hussein I (Hashemite-Jordan)	Public Service	Humane Letters
1976	Chester H. Ferguson	Education/Public Service	Humane Letters
	Stephen C. O'Connell	Education/Law	Humane Letters
1977	Mae Knight Clark	Education	Humane Letters
	Lee Strasberg	Theatre	Fine Arts
	Herbert Spencer Zim	Science/Education	Science
1978	Lillian Gordy Carter	Public Service	Humane Letters
	Michael Butler Yeats	International Affairs	Laws
	William H. Werkmeister	Philosophy	Humane Letters
1979	Rev. Charles K. Steele, Sr.	Public Service	Humane Letters
	William Styron	Literature	Literature
1980	B. K. Roberts	Public Service/Law	Humane Letters
1981	Burt Reynolds	Theatre	Humane Letters
1982	Roger L. Stevens	Theatre	Humane Letters
1983	Ricardo De La Espriella	Public Service	Laws
	Beth Walton Moor	Public Service	Humane Letters
	William C. Norris	Business/Public Service	Humane Letters
1984	Rafael Caldera	Public Service/Education	Humane Letters
	John P. McGovern	Medicine	Science
1985	Claude Pepper	Public Service	Humane Letters
1986	Don Fuqua	Science	Science
	Daisy Parker Flory	Public Service	Humane Letters
	Joseph Papp	Theatre	Humane Letters

Source: Office of the President

PANAMA CITY CAMPUS

FALL 1986

The Panama City Campus of The Florida State University began operations in 1967 when three universities started offering courses to area students. The University of West Florida was assigned to administer the center in 1971, and that administrative responsibility was transferred to The Florida State University in July, 1982. A 20-acre waterfront site was donated by the Bay County Commission for new construction, since classes had been held in buildings loaned by the Bay County School Board and Gulf Coast Community College almost since the campus's inception. Construction of new facilities for the campus began in 1983. They were ready for use beginning with the 1987 Spring Semester when classes were held in them for the first time.

Students on campus are served by a permanent faculty and staff of 19 people, plus additional faculty who travel from the Tallahassee campus on a regular basis. About 85 percent of the courses offered at the campus are taught by Tallahassee faculty, thus offering area students the same course structure, content, and expertise available to Tallahassee campus students.

Undergraduate degree programs offered at the Panama City campus include accounting, management, marketing, advertising/public relations, business communications, general communication arts, criminology, elementary education, English education, math education, nursing, psychology, social science interdisciplinary, and fashion merchandising.

The articulation agreement between the Florida junior/community colleges and the nine state universities enables students to complete an associate in arts degree at Gulf Coast Community College, or any other Florida community college, and be admitted automatically into available upper division programs for the last two years of coursework at Florida State's Panama City Campus.

Student Headcount

Enrollment By Level

	<u>Number</u>	<u>% Total</u>
Freshman	22	3.2
Sophomore	4	.6
Junior	148	21.4
Senior	122	17.6
Graduate	107	15.5
Unclassified	<u>288</u>	<u>41.7</u>
Total	691	100.0

Student Headcount

Enrollment By Age

	<u>UG</u>	<u>G</u>	<u>N</u>	<u>Total</u>	<u>% UG</u>	<u>% G</u>	<u>% N</u>
17 and below	1			1	.3		
18-22	73	2	28	103	24.7	1.9	9.7
23-25	49	5	29	83	16.6	4.7	10.0
26-30	65	23	53	141	22.0	21.5	18.4
31-35	40	22	61	123	13.5	20.5	21.2
36-40	30	25	46	101	10.1	23.4	16.0
41 and above	38	30	71	139	12.8	28.0	24.7
Totals	296	107	288	691	100.0	100.0	100.0

Note: All Panama City Campus data on these pages are extracted from the total campus figures used throughout this Fact Book. For key see last page of Panama City data.

PANAMA CITY CAMPUS
STUDENT CHARACTERISTICS
FALL 1986
HEADCOUNT ENROLLMENT

<u>By Department</u>	<u>UG</u>	<u>G</u>	<u>N</u>	<u>Total</u>
<u>College of Arts & Sciences</u>				
Chemistry	1	0	0	1
Psychology	22	5	0	27
Arts & Sciences Totals	23	5	0	28
<u>College of Business</u>				
Accounting	32	0	0	32
Business Administration	1	3	1	5
Finance	1	2	0	3
Hospitality Administration	0	0	0	0
Management	35	31	0	66
Marketing	11	0	0	11
Business NFA	16	0	0	16
Business Totals	96	36	1	133
<u>College of Education</u>				
Childhood, Reading, and Special Education	84	15	0	99
Curriculum and Instruction	3	16	0	19
Human Services and Studies	0	1	0	1
Educational Leadership	0	13	0	13
Special Education and Reading	0	13	0	13
Education NFA	8	0	0	8
Education Totals	95	58	0	153
<u>College of Home Economics</u>				
Clothing, Textiles, and Merchandising	3	0	0	3
Home Economics Education	1	1	0	2
Home Economics Totals	4	1	0	5
<u>College of Social Sciences</u>				
Economics	1	0	0	1
Social Science	38	0	0	38
Sociology	1	0	0	1
Social Science Totals	40	0	0	40
<u>School of Social Work</u>	1	2	0	3
<u>School of Criminology</u>	15	5	0	20

PANAMA CITY CAMPUS
STUDENT CHARACTERISTICS
FALL 1986
HEADCOUNT ENROLLMENT

	<u>UG</u>	<u>G</u>	<u>N</u>	<u>Total</u>
<u>College of Communication</u>				
Communication	15	0	0	15
Communication Disorders	1	0	0	1
Communication NFA	5	0	0	5
Communication Totals	21	0	0	21
<u>School of Visual Arts</u>				
Art	1	0	0	1
Visual Arts Totals	1	0	0	1
Special/Undecided	0	0	287	287
Panama City Totals	296	107	288	691

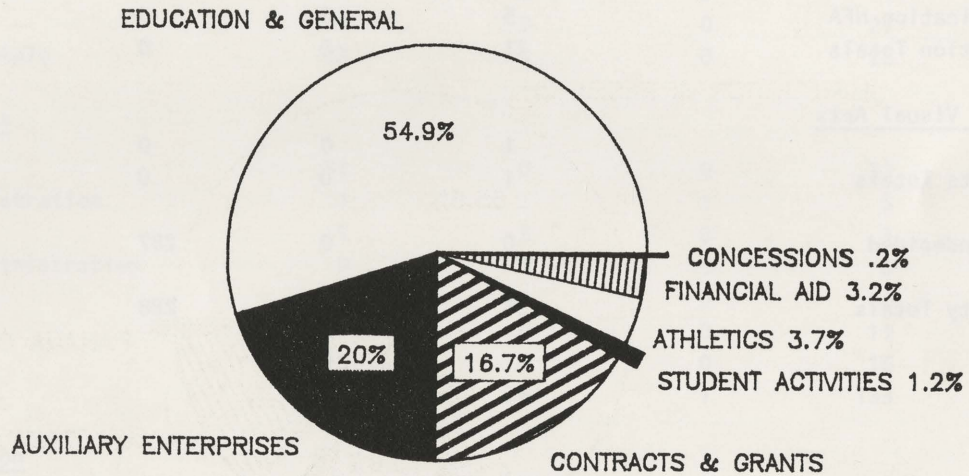
<u>By School/College</u>	<u>UG</u>	<u>G</u>	<u>N</u>	<u>Total</u>	<u>% Total</u>
Arts & Sciences	23	5	0	28	4.1
Business	96	36	1	133	19.3
Education	95	58	0	153	22.1
Home Economics	4	1	0	5	.7
Social Sciences	40	0	0	40	5.8
Social Work	1	2	0	3	.4
Criminology	15	5	0	20	2.9
Communication	21	0	0	21	3.0
Visual Arts	1	0	0	1	.2
Special/Undecided	0	0	287	287	41.5
Totals	296	107	288	691	100.0

Key: UG Undergraduate Students N Unclassified Students
G Graduate Students

Source: Fall (Preliminary) Student Data Course File

OPERATING BUDGET
1986-1987

THE FLORIDA STATE UNIVERSITY
OPERATING BUDGET
1986-87



SOURCE: FSU 1986-87 Operating Budget

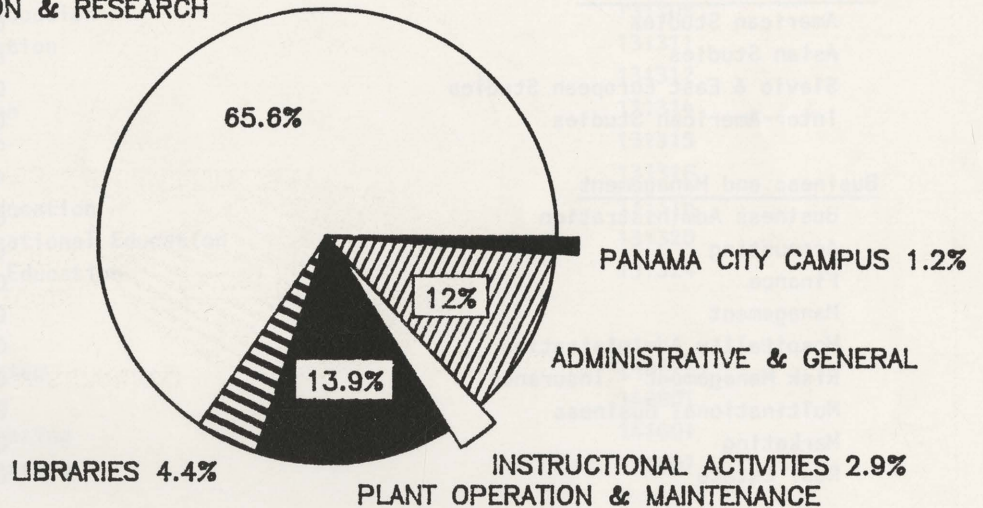
	<u>Budget</u>	<u>% of Total</u>
Education and General	\$135,428,968	54.87
Auxiliary Enterprises		
Working Capital	4,711,432	
Auxiliary(including Extension)	44,000,097	
Debt Service	767,344	
Total	49,478,873	20.05
Contracts and Grants	41,310,678	16.74
Student Activities	3,071,751	1.24
Athletics	9,127,016	3.70
Concessions	404,782	.16
Financial Aid	8,012,862	3.24
Totals	<u>246,834,930</u>	<u>100.00</u>

Source: FSU 1986-87 Operating Budget

EDUCATION AND GENERAL
ALLOCATED RESOURCES BY FUNCTION
1986-1987

E & G ALLOCATED RESOURCES
BY FUNCTION
1986-87

INSTRUCTION & RESEARCH



TOTAL = 135,428,968

SOURCE: FSU 1986-87 Operating Budget

<u>Function</u>	<u>Budget</u>
Administrative and General	\$ 16,270,616
Instruction and Research	88,851,675
Libraries	6,000,428
Plant Operation and Maintenance	18,768,958
Instructional Activities	3,938,731
Panama City Campus	1,598,560
Total	<u>\$135,428,968</u>

Source: FSU 1986-87 Operating Budget

FLORIDA STATE UNIVERSITY DEPARTMENTS/PROGRAMS
INCLUDED IN CIP DISCIPLINE CATEGORIES, FALL, 1986

<u>DISCIPLINE AND ACADEMIC PROGRAMS</u>	<u>CIP Code</u>
<u>Architecture & Environmental Design</u>	
Urban & Regional Planning	040301
Interior Design	040501
<u>Area and Ethnic Studies</u>	
American Studies	050102
Asian Studies	050103
Slavic & East European Studies	050105
Inter-American Studies	050115
<u>Business and Management</u>	
Business Administration	060101
Accounting	060201
Finance	060301
Management	060401
Hospitality Administration	060701
Risk Management - Insurance	060801
Multinational Business	060901
Marketing	061401
Real Estate	061701
<u>Communications</u>	
Communication, General	090101
<u>Computer and Information Sciences</u>	
Computer & Information Science	110101
<u>Education</u>	
Educational Administration	130401
Higher Education	130406
Media Education	130501
Instructional Systems	130601
Educational Research & Testing	130603
Evaluation & Measurement	130604
Educational Psychology	130802
Foundations of Education	130901
Special Education	131001
Mental Retardation	131006
Visual Disabilities	131009
Emotional Disturbances/Learning Disabilities	131011
Counseling Psychology & Human Systems	131101
Adult Education	131201
Elementary Education	131202
Early Childhood Education	131204

FLORIDA STATE UNIVERSITY DEPARTMENTS/PROGRAMS
INCLUDED IN CIP DISCIPLINE CATEGORIES, FALL, 1986

DISCIPLINE AND ACADEMIC PROGRAMS

CIP Code

Education, continued

Art Education	131302
English Education	131305
Multilingual/Multicultural Education	131306
Health Education	131307
Home Economics Education	131308
Mathematics Education	131311
Music Education	131312
Physical Education	131314
Reading Education	131315
Science Education	131316
Social Studies Education	131318
Comprehensive Vocational Education	131320
Movement Science Education	131324

Engineering

Chemical Engineering	140701
Civil Engineering	140801
Electrical Engineering	141001
Mechanical Engineering	141901

Foreign Languages

Russian	160402
Slavic	160403
German	160501
Greek	160601
French	160901
Italian	160902
Latin	160903
Spanish	160905

Allied Health

Medical Technology	170310
Rehabilitation Services	170407
Music Therapy	170806

Health Sciences

Communication Disorders	180103
Nursing	181101

Home Economics

Home Economics	190101
Food & Nutrition	190503
Home & Family Life	190701

FLORIDA STATE UNIVERSITY DEPARTMENTS/PROGRAMS
INCLUDED IN CIP DISCIPLINE CATEGORIES, FALL, 1986

<u>DISCIPLINE AND ACADEMIC PROGRAMS</u>	<u>CIP Code</u>
<u>Home Economics, continued</u>	
Marriage & the Family	190704
Clothing, Textiles and Merchandising	190901
<u>Law</u>	220101
<u>Letters</u>	
English	230101
Classics	230201
Comparative & World Literature	230301
<u>Liberal/General Studies</u>	
Humanities	240102
<u>Library & Archival Science</u>	
Library Science	250401
<u>Life Sciences</u>	
Biological Sciences	260101
Biochemistry	260201
<u>Mathematics</u>	
Mathematics	270101
Statistics	270501
<u>Parks & Recreation</u>	
Leisure Services & Studies	310301
<u>Philosophy, Religion, & Theology</u>	
Philosophy	380101
Religion	380201
<u>Physical Sciences</u>	
Physics, Interdisciplinary	400101
Meteorology	400401
Chemistry	400501
Chemical Physics	400506
Chemical Science	400508
Geology	400601
Oceanography	400702
Physics	400801
Geophysical Fluid Dynamics	400805
Molecular Biophysics	400809
<u>Psychology</u>	
Psychology	420101

FLORIDA STATE UNIVERSITY DEPARTMENTS/PROGRAMS
INCLUDED IN CIP DISCIPLINE CATEGORIES, FALL, 1986

<u>DISCIPLINE AND ACADEMIC PROGRAMS</u>	<u>CIP Code</u>
<u>Protective Services</u>	
Criminology	430104
<u>Public Affairs</u>	
Public Administration	440401
Social Work	440701
<u>Social Sciences</u>	
Social Science	450101
Anthropology	450201
Demography	450501
Economics	450601
Geography	450701
History	450801
International Affairs	450901
Political Science	451001
Sociology	451101
<u>Visual and Performing Arts</u>	
Dance	500301
Theatre	500501
Studio Art	500701
History & Criticism of Art	500703
Music - Liberal Arts	500901
Music History & Literature	500902
Music Performance	500903
Music Composition	500904
Music Theory	500905
Opera Production	500906

Note: CIP (Classification of Instructional Programs) Codes are used by higher education institutions throughout the U.S. to describe programs for comparative purposes. The CIP codes replace the old 4-digit HEGIS classification system.

Source: Board of Regents

ACADEMIC DEGREE PROGRAM INVENTORY, JANUARY, 1987

BOR APPROVED DEGREE PROGRAM, CIP CATEGORY & BOR APPROVED LEVELS	DEGREE LEVELS OFFERED					MAJOR AT FSU	MAJOR CODE
	AT FSU						
	B	M	A	S	D P		
<u>Architecture & Environmental Design</u>							
Urban & Regional Planning--M,D		M				Planning	329710
		M		D		Urban & Regional Planning	329720
Interior Design--B,M	B	M				Interior Design**	422610
<u>Area and Ethnic Studies</u>							
American Studies--B,M	B	M				American Studies	110410
Asian Studies--B,M	B	M				Asian Studies	111710
	B					Asian Studies/Business	111711
Slavic & East European Studies--B,M	B	M				Slavic & East European Studies	994000
Latin-American & Caribbean Studies--B	B					Latin-American & Caribbean Studies	118010
<u>Business and Management</u>							
Business Administration--B,M,D	B	M		D		Business Administration**	211310
						Business, Undecided (NFA)**	219910
						Business, NFA	219999
Accounting--B,M	B	M				Accounting**	210110
Finance--B,M	B	M				Finance**	214310
Management--B,M	B	M				Management**	216610
	B					Purchasing & Materials Management**	216611
	B					Human Resource Management**	216612
	B					Management Information Systems**	216613
Hospitality Administration--B	B					Hospitality Administration**	215710
Risk Management - Insurance--B,M	B	M				Risk Management-Insurance**	216210
Multinational Business--B	B					Multinational Business Operations**	219510
Marketing--B,M	B	M				Marketing**	216710
Real Estate--B	B					Real Estate**	216220
<u>Communications</u>							
Communication--B,M,D	B					Media Performance**	410101
	B					Media Communication**	410102

**Entrance into this major requires prior approval by school/college

Note: NFA indicates those students not formally admitted to the degree program.

Note: Board of Regents (BOR) approved degree programs are printed on the Official Diplomas. The major area of concentration appears on the final transcript.

ACADEMIC DEGREE PROGRAM INVENTORY, JANUARY, 1987

BOR APPROVED DEGREE PROGRAM, CIP CATEGORY & BOR APPROVED LEVELS	DEGREE LEVELS OFFERED					MAJOR AT FSU	MAJOR CODE
	AT FSU						
	B	M	A	S	D P		
Communication (Continued)	B					Media Production**	410103
	B					Political Communication**	410104
	B					Advertising**	410105
	B					Interpersonal Communication**	410106
	B					Communication Studies**	410107
	B					Comm. as a Liberal Art**	410108
	B					Communication for Business**	410109
	B					General Communication**	410110
	B	M			D	Mass Communication**	410111
	B	M			D	Speech Communication**	410112
	B	M			D	Comm. Theory & Research**	410114
	B					Public Relations**	410120
	B					Communication/Art**	410125
	B					Communication/Science**	410130
						Communication, NFA	419999
<u>Computer and Information Sciences</u>							
Computer & Information Science--B,M,D	B	M			D	Computer Science	116610
						Computer Science, NFA	116699
<u>Education</u>							
Educational Administration--M,S,D	M		S		D	Educational Admin. & Supervision	220604
	M		S		D	Educational Policy, Planning, and Analysis	220605
Higher Education--M,S,D	M		S		D	Higher Education	220602
Media Education--M	M					Media Education	220308
Instructional Systems--M,S,D	M		S		D	Instructional Systems	220307
Educational Research & Testing--M,S,D	M		S		D	Research Design & Statistics	220301
	M		S		D	Institutional Research	220302
Evaluation & Measurement--M,S,D	M		S		D	Measurement & Testing	220303
	M		S		D	Research & Evaluation	220310
Educational Psychology--M,S,D	M		S		D	Educational Psychology	220306
Foundations of Education--M,S,D	M		S		D	History & Philosophy of Educ.	220802
	M		S		D	International/Intercultural Development Education	220803
	M		S		D	Social Science & Education	220804
Special Education--B,M,S,D				S	D	Special Education**	220704
Mental Retardation--B,M,S,D	B	M				Mental Retardation**	220705

ACADEMIC DEGREE PROGRAM INVENTORY, JANUARY, 1987

BOR APPROVED DEGREE PROGRAM, CIP CATEGORY & BOR APPROVED LEVELS	DEGREE LEVELS OFFERED AT FSU					MAJOR AT FSU	MAJOR CODE
	B	M	A	S	D P		
Visual Disabilities--B,M,S	B	M				Visual Disabilities**	220706
Emotional Disturbances/Learning Disabilities--B,M,S,D	B	M				Emotional Disturbances/Learning Disabilities**	220707
Counseling Psychology & Human Systems--D					D	Counseling Psychology & Human Systems*	220505
Counseling & Human Systems--M,S		M		S		Counseling & Human Systems	220501
Adult Education--M,S,D		M		S	D	Adult Education	220801
Elementary Education--B,M,S,D	B	M		S	D	Elementary Education**	220101
Early Childhood Education--B,M,S,D	B	M		S	D	Early Childhood Education**	220102
Science Education--B,M,S	B	M		S		Science Education	220108
Art Education--B,M,S,D	B	M		S	D	Art Education**	420711
English Education--B,M,S,D	B	M		S	D	English Education**	220202
Multilingual/Multicultural Education-- B,M,S,D	B	M		S	D	Multilingual/Multicult. Educ.**	220201
Health Education--B,M	B	M				Health Education**	220503
Home Economics Education--B,M	B	M				Home Economics Education**	255610
Mathematics Education--B,M,S,D	B	M		S	D	Mathematics Education**	220205
Music Education--B,M,D	B	M			D	Music Education**	447250
Physical Education--B,M,S,D	B					Physical Education**	220403
		M		S	D	Administration & Professional Preparation	220404
Reading Education--B,M,S,D		M		S	D	Reading Education/Language Arts**	220703
Science Education--D					D	Methods in Secondary Science Education	220204
Social Studies Education--B,M,S,D	B	M		S	D	Social Studies Education**	220203
Comprehensive Vocational Education--S,D				S	D	Comprehensive Voc. Educ.	220603
Movement Science Education--B,M,S,D		M		S	D	Exercise Physiology**	220401
		M		S	D	Motor Behavior**	220402
Secondary Science and/or Mathematics Teaching--B	B					Secondary Science and/or Mathematics Teaching	111115
						Education, NFA	229999
Engineering							
Civil Engineering--B		B				Civil Engineering**	555010

*Name change effective Fall, 1985, for doctorate only

ACADEMIC DEGREE PROGRAM INVENTORY, JANUARY, 1987

BOR APPROVED DEGREE PROGRAM, CIP CATEGORY & BOR APPROVED LEVELS	DEGREE LEVELS OFFERED		MAJOR AT FSU	MAJOR CODE
	AT FSU			
	B	M A S D P		
Electrical Engineering--B	B		Electrical Eng.**	553010
Mechanical Engineering--B	B		Mechanical Engineering**	554010
Chemical Engineering--B	B		Chemical Engineering**	556010
			Engineering, Undecided	559910
			Engineering, NFA	559999
Foreign Languages				
Russian--B	B		Russian	117130
	B		Russian/Business	117131
Slavic--M		M	Slavic	117150
German--B,M	B M		German	117120
	B		German/Business	117121
Greek--B,M	B M		Greek	111920
French--B,M,D	B M	D	French	117110
	B		French/Business	117111
Italian--B	B		Italian	117160
	B		Italian/Business	117161
Latin--B,M	B M		Latin	111930
Spanish--B,M,D	B M	D	Spanish	117140
	B		Spanish/Business	117141
Allied Health				
Medical Technology--B	B		Medical Technology	111130
Rehabilitation Services--B,M,S,D	B M	S D	Rehabilitation Services**	220502
Music Therapy--B,M	B M		Music Therapy**	447260
Health Sciences				
Audiology & Speech Pathology--B,M,A,D	B M A	D	Audiology & Speech Path.**	418510
			Audiology & Speech Path., NFA	419999
Nursing--B,M	B M		Nursing**	247310
			Nursing, NFA	249999
Home Economics				
Home Economics--B,D	B	D	Home Economics	250010
Food & Nutrition--B,M	B		Dietetics	254410
	B		Nutrition and Fitness	254415
	B M		Food & Nutrition	254420
	B		Food Service Administration	254430
	B		Food & Nutrition Science	254440

ACADEMIC DEGREE PROGRAM INVENTORY, JANUARY, 1987

BOR APPROVED DEGREE PROGRAM, CIP CATEGORY & BOR APPROVED LEVELS	DEGREE OFFERED AT FSU						MAJOR AT FSU	MAJOR CODE
	B	M	A	S	D	P		
Home & Family Life--B,M	B	M					Home & Family Life	255310
		M					Consumer Economics	255311
		M					Family Relations	255312
	B	M					Child Development	255320
	B	M					Housing	255330
Marriage & the Family--D					D		Marriage & Family - Home Ec.	991100
					D		Marriage & Family - Sociology	991200
Clothing & Textiles--B,M	B	M					Clothing & Textiles	252010
	B						Fashion Design	252020
	B	M					Fashion Merchandising	252030
	B						Textiles	252040
<u>Law</u>								
Law--P					P		Law	313410
					P		Law (Business)	313411
					P		Law (Economics)	313412
					P		Law (Government)	313413
					P		Law (Public Administration)	313414
					P		Law (Urban & Regional Planning)	313415
<u>Letters</u>								
English--B,M,D	B	M			D		English	114210
	B	M			D		Linguistics	114211
	B	M			D		Literature	114212
	B	M			D		Creative Writing	114215
	B						English/Business	114217
Classics--B,M	B	M					Classics	111910
	B	M					Classical Civilizations	111911
	B						Classics & Religion	
	B	M					Greek & Latin	111915
<u>Liberal/General Studies</u>								
Humanities--B,M,D	B	M			D		Humanities	115910
<u>Library & Archival Science</u>								
* Library Science--B,M,A,D		M	A		D		Library Science	236510
<u>Life Sciences</u>								
Biological Sciences--B,M,D	B	M			D		Biological Sciences	111110
							Medical Science	111127

* Bachelors degree authorized for current students only.

ACADEMIC DEGREE PROGRAM INVENTORY, JANUARY, 1987

BOR APPROVED DEGREE PROGRAM, CIP CATEGORY & BOR APPROVED LEVELS	DEGREE LEVELS AT FSU					MAJOR AT FSU	MAJOR CODE
	B	M	A	S	D P		
Biochemistry--B	B					Biochemistry	111612
<u>Mathematics</u>							
Mathematics--B,M,D	B	M			D	Mathematics	116810
						Mathematics, NFA	116899
Statistics--B,M,D	B	M			D	Statistics	119310
<u>Parks & Recreation</u>							
Leisure Services & Studies--B,M	B	M				Leisure Services & Studies	220504
<u>Philosophy, Religion, & Theology</u>							
Philosophy--B,M,D	B	M			D	Philosophy	117610
Religion--B,M	B	M				Religion	118610
	B					Religion & Classics	
<u>Physical Sciences</u>							
Physics, Interdisciplinary--B	B					Physics - Biology	118121
	B					Physics - Biology-Premedicine	118122
	B					Physics - Health Physics	118125
	B					Physics - Biophysics	118127
	B					Physics - Management	118132
	B					Physics - Environmental Sciences	118142
	B					Physics - Oceanography	118144
	B					Physics - Geology	118146
	B					Physics - Education	118150
	B					Physics - Music Technology	118160
	B					Physics - Philosophy	118165
	B					Physics - Computer Science	118185
	B					Physics - Government	118195
Meteorology--B,M,D	B	M			D	Meteorology	116910
Chemistry--B,M,D	B	M			D	Chemistry	111610
	B	M			D	Analytical Chemistry	111611
	B	M			D	Biochemistry	111612
	B	M			D	Inorganic Chemistry	111613
	B	M			D	Nuclear Chemistry	111614
	B	M			D	Organic Chemistry	111615
	B	M			D	Physical Chemistry	111616
Chemical Physics--M,D		M			D	Chemical Physics	117810
Chemical Science--B	B					Chemical Science	111620
Geology--B,M,D	B	M			D	Geology	114710

ACADEMIC DEGREE PROGRAM INVENTORY, JANUARY, 1987

BOR APPROVED DEGREE PROGRAM, CIP CATEGORY & BOR APPROVED LEVELS	DEGREE LEVELS						MAJOR CODE	
	AT FSU							
	B	M	A	S	D	P		MAJOR AT FSU
Oceanography--M,D	M				D		Oceanography	116110
	M				D		Biological Oceanography	116111
	M				D		Chemical Oceanography	116112
	M				D		Geological Oceanography	116113
	M				D		Physical Oceanography	116114
Physics--B,M,D	B	M			D		Physics	118110
Geophysical Fluid Dynamics--D					D		Geophysical Fluid Dynamics	117510
Molecular Biophysics--D					D		Molecular Biophysics	117710
<u>Psychology</u>								
Psychology--B,M,D	B	M			D		Psychology	118410
	B	M			D		General-Experimental Psychology	118411
	B	M			D		Clinical Psychology	118412
	B	M			D		School Psychology	118413
<u>Protective Services</u>								
Criminology--B,M,D	B	M			D		Criminology	349410
<u>Public Affairs</u>								
Public Administration--M,D		M			D		Public Administration	325110
Social Work--B,M,D	B	M			D		Social Work	338910
<u>Social Sciences</u>								
Social Science--B,M	B	M					Social Science	328810
Anthropology--B,M,D	B	M			D*		Anthropology	110510
	B	M					Archaeology	110511
Economics--B,M,D	B	M			D		Economics	322210
Geography--B,M,D	B	M			D*		Geography	324610
History--B,M,D	B	M			D		History	115210
International Affairs--B,M	B	M					International Affairs	329910
Political Science--B,M,D	B	M			D		Political Science	324910
Demography--M		M					Demography	328811
Sociology--B,M,D	B	M			D		Sociology	329010
<u>Visual and Performing Arts</u>								
Dance--B,M	B	M					Dance**	422810
							Dance, NFA	429999

*Cooperative Program with University of Florida

ACADEMIC DEGREE PROGRAM INVENTORY, JANUARY, 1987

BOR APPROVED DEGREE PROGRAM, CIP CATEGORY & BOR APPROVED LEVELS	DEGREE LEVELS						MAJOR AT FSU	MAJOR CODE
	AT FSU							
	B	M	A	S	D	P		
Theatre--B,M,D	B	M			D		Theatre	430810
	B						Acting	430820
	B						Design/Technology	430830
	B						Musical Theatre - Theatre Theatre, NFA	430890 439999
Studio Art--B,M	B	M					Studio Art	420610
History & Criticism of Art--B,M,D	B	M			D		Art History	420810
Music - Liberal Arts--B	B						Music - Liberal Arts**	993000
Music History & Literature--B	B						Music History**	447230
Music Performance--B,M,D	B	M			D		Music Performance**	447210
	B	M			D		Brass**	447211
	B	M					Harp**	447212
	B	M			D		Organ**	447213
	B	M			D		Percussion**	447214
	B	M			D		Piano**	447215
	B	M			D		Strings**	447216
	B	M			D		Voice**	447217
	B	M			D		Woodwinds**	447218
	B	M					Harpischord**	447219
		M					Choral Conducting	447280
		M					Wind Ensemble/Band Conducting	447281
		M					Accompanying	447285
	B						Musical Theatre** - Music	447290
	B						Music, Undecided**	447298
							Music, NFA	449999
Music Composition--B,M,D	B	M			D		Music Composition**	447220
Music Theory--B,M	B	M					Music Theory**	447270
Opera Production--M		M					Opera	447240
Music--D					D		Music Theory	447270
					D		Musicology	447271
Musicology--M		M					Musicology**	447271
<u>Undecided/Undeclared</u>								
Undecided							Undecided	920001
Special Student							Special Student	920002

Source: Office of Budget and Analysis



STUDENTS



- Enrollment was 23,138 with 74 percent undergraduates, 19 percent graduates, 7 percent unclassified
- 77 percent of all students were Floridians, and 95 percent were from the United States
- Top five counties in Florida contributing students were Leon, Dade, Broward, Duval, and Pinellas
- Students from 49 states and the District of Columbia were in attendance
- Fourteen states (excluding Florida) contributed over 100 students each (in descending order):
Georgia, New York, Virginia, New Jersey, Illinois, Alabama, Pennsylvania, Ohio, Tennessee,
Michigan, North Carolina, South Carolina, Maryland, and Louisiana
- 112 foreign countries, 1 U.S. Commonwealth, and 1 U.S. Unincorporated Territory were represented,
50 of which had 5 or more students present
- 11 foreign countries contributed over 25 students each (in descending order): Canada, Grenada,
South Korea, People's Republic of China, Taiwan, United Kingdom, India, Jamaica, Cuba, Saudi
Arabia, and West Germany
- Women constituted 56 percent of the enrollment
- Minorities made up 11 percent of the total enrollment; 63 percent of the minority enrollment was
Black, 28 percent was Hispanic
- Foreign student comprise 5 percent of the total enrollment
- Average age of all students was 23; of undergraduates, 21; of graduates, 31
- Students enrolled full-time represented 78.3 percent of those in attendance

Source: Fall (Preliminary) Student Data Course File

CHARACTERISTICS OF STUDENTS
HEADCOUNT ENROLLMENT

BY SEX	FALL 1983		FALL 1984		FALL 1985		FALL 1986	
	NUMBER	%	NUMBER	%	NUMBER	%	NUMBER	%
Male	9,848	46.8	9,969	46.8	10,258	47.1	10,245	44.3
Female	11,217	53.2	11,351	53.2	11,500	52.9	12,893	55.7
Total	21,065		21,320		21,758		23,138	

BY RACE	FALL 1983		FALL 1984		FALL 1985		FALL 1986	
	NUMBER	%	NUMBER	%	NUMBER	%	NUMBER	%
White	18,026	85.6	18,339	86.0	18,734	86.1	19,929	86.1
Black	1,421	6.7	1,498	7.0	1,575	7.2	1,576	6.8
Hispanic	390	1.8	562	2.6	623	2.9	701	3.0
Asian	80	.4	138	.7	178	.8	190	.8
American Indian	32	.2	34	.2	33	.1	41	.2
Non-Res. Alien	542	2.6	560	2.6	559	2.6	689	3.0
Not Reported	574	2.7	189	.9	56	.3	12	.1
Total	21,065		21,320		21,758		23,138	

BY LEVEL	FALL 1983		FALL 1984		FALL 1985		FALL 1986	
	NUMBER	%	NUMBER	%	NUMBER	%	NUMBER	%
Freshman	3,046	14.5	3,713	17.4	4,136	19.0	5,114	22.1
Sophomore	2,707	12.9	2,245	10.5	2,521	11.6	2,628	11.4
Junior	5,313	25.2	5,085	23.9	4,542	20.9	4,731	20.4
Senior	4,805	22.8	4,992	23.4	4,952	22.7	4,598	19.8
Graduate	4,071	19.3	4,105	19.3	4,191	19.3	4,319	18.7
Unclassified	1,123	5.3	1,180	5.5	1,416	6.5	1,748	7.6
Total	21,065		21,320		21,758		23,138	

BY PART-TIME OR FULL-TIME	FALL 1983		FALL 1984		FALL 1985		FALL 1986	
	NUMBER	%	NUMBER	%	NUMBER	%	NUMBER	%
Full-time	16,596	79.0	16,475	77.0	16,865	77.5	18,118	78.3
Part-time	4,469	21.0	4,845	23.0	4,893	22.5	5,020	21.7
Total	21,065		21,320		21,758		23,138	

Source: Fall (Preliminary) Student Data Course File

CHARACTERISTICS OF STUDENTS
HEADCOUNT ENROLLMENT

BY AGE	FALL, 1983			FALL, 1984			FALL, 1985			FALL, 1986		
	PERCENTAGE			PERCENTAGE			PERCENTAGE			PERCENTAGE		
	UG	G	N	UG	G	N	UG	G	N	UG	G	N
17 and below	.3	-	.7	.5	-	1.4	.6	-	1.2	.7	-	1.1
18-22	78.1	7.3	14.7	77.5	7.3	10.1	77.5	6.2	16.9	78.8	5.6	16.5
23-25	12.4	24.5	13.6	12.7	22.7	14.3	12.6	22.2	13.9	11.8	23.5	16.5
26-30	5.2	28.1	22.0	5.1	27.0	21.9	5.1	26.9	19.5	4.8	26.1	17.7
31-35	2.2	19.3	19.3	2.2	19.6	20.9	2.3	20.3	17.9	2.0	18.9	16.4
36-40	1.0	10.7	12.9	1.1	12.0	13.1	1.1	12.4	15.2	1.1	13.0	14.4
41 and above	.8	10.1	16.8	.9	11.4	18.3	.8	12.0	15.4	.8	12.9	17.4

BY SCHOOL/COLLEGE	FALL 1983		FALL 1984		FALL 1985		FALL 1986	
	%		%		%		%	
	Number	Total	Number	Total	Number	Total	Number	Total
Arts & Sciences	4,526	21.5	4,463	20.9	4,083	18.8	4,164	18.0
Business	4,738	22.5	4,740	22.2	4,960	22.8	5,538	24.0
Education	1,920	9.1	1,997	9.4	2,053	9.4	2,108	9.1
Home Economics	802	3.8	795	3.7	726	3.3	662	2.9
Library & Info. Studies	97	.5	112	.5	124	.6	141	.6
Nursing	511	2.4	498	2.3	446	2.0	382	1.6
Criminology	633	3.0	641	3.0	577	2.7	552	2.4
Law	604	2.9	595	2.8	570	2.6	527	2.3
Social Sciences	1,535	7.3	1,647	7.7	1,844	8.5	1,862	8.0
Social Work	403	1.9	419	2.0	427	2.0	370	1.6
Communication	1,048	5.0	941	4.4	1,009	4.6	1,239	5.4
Visual Arts	691	3.3	701	3.3	661	3.0	697	3.0
Theatre	346	1.6	295	1.4	266	1.2	271	1.2
Music	735	3.5	676	3.2	695	3.2	711	3.0
Interdivisional	70	.3	102	.5	110	.5	113	.5
Undecided	1,202	5.7	1,117	5.3	1,436	6.6	1,427	6.2
Special Students	935	4.4	1,150	5.4	1,194	5.5	1,674	7.2
Engineering	269	1.3	431	2.0	577	2.7	700	3.0
Total	21,065	100.0	21,320	100.0	21,758	100.0	23,138	100.0

KEY:

UG Undergraduate Students
G Graduate Students
N Unclassified Students

Source: Fall (Preliminary) Student Data Course File

STUDENT CHARACTERISTICS, FALL 1986

Florida High Schools Contributing
Ten or More First-Time-In-College Students
Entering in the Summer or Fall 1986

<u>SCHOOL AND CITY</u>	<u>NUMBER</u>	<u>SCHOOL AND CITY</u>	<u>NUMBER</u>
Taravella, Coral Springs	54	American Senior, Hialeah	14
Lincoln, Tallahassee	51	Bishop Moore, Orlando	14
Miami Palmetto, Miami	48	Boone, Orlando	14
Leon, Tallahassee	48	Piper, Sunrise	14
Winter Park, Winter Park	46	King Senior, Tampa	14
Miami Killian Senior, Miami	42	Boca Raton Community, Boca Raton	13
Wolfson, Jacksonville	37	Cocoa Beach, Cocoa Beach	13
St. Thomas Aquinas, Ft. Lauderdale	35	Cardinal Gibbons, Ft. Lauderdale	13
Lake Brantley, Altamonte Springs	34	Ribault, Jacksonville	13
Chamberlain, Tampa	34	Jupiter Senior, Jupiter	13
Riverview, Sarasota	30	Miami Norland Senior, Miami	13
Terry Parker, Jacksonville	28	Northeast High, St. Petersburg	13
Orange Park, Orange Park	28	Dunedin Senior, Dunedin	12
Miami Sunset Senior, Miami	26	Fletcher, Jacksonville	12
Cardinal Newman, West Palm Beach	26	Lee, Jacksonville	12
Clearwater Central Catholic, Clearwater	24	Merritt Island, Merritt Island	12
Pope John Paul II, Boca Raton	23	Leto Comprehensive, Tampa	12
Northeast, Ft. Lauderdale	23	Venice, Venice	12
Bishop Kenny, Jacksonville	23	Winter Haven, Winter Haven	12
Vero Beach, Vero Beach	23	Manatee, Bradenton	11
Clearwater, Clearwater	22	Buchholz, Gainesville	11
Godby, Tallahassee	21	The Bolles School, Jacksonville	11
Nova, Ft. Lauderdale	19	Forrest, Jacksonville	11
Lake Mary, Lake Mary	19	Leonard, Lake Worth	11
Coral Gables Senior, Coral Gables	18	Lyman, Longwood	11
Miami Southridge Senior, Miami	18	Satellite, Satellite Beach	11
Palm Beach Gardens, Palm Beach Gardens	18	Plant, Tampa	11
Coral Springs, Coral Springs	17	Coconut Creek, Coconut Creek	10
Deland, Deland	17	Ft. Myers, Ft. Myers	10
Choctawhatchee Senior, Ft. Walton Beach	17	Ft. Walton Beach, Ft. Walton Beach	10
Sandalwood, Jacksonville	17	Hollywood Hills, Hollywood	10
Sarasota, Sarasota	17	Episcopal, Jacksonville	10
Martin County, Stuart	17	Key West, Key West	10
Spanish River Community, Boca Raton	16	Our Lady of Lourdes, Miami	10
Lakeland Senior, Lakeland	16	New Smyrna Beach Sr., New Smyrna Beach	10
Christopher Columbus, Miami	16	Edgewater, Orlando	10
North Miami Beach Sr., North Miami Beach	16	Plantation, Plantation	10
Washington Senior, Pensacola	16	Lakewood Senior, St. Petersburg	10
Miami Beach Senior, Miami Beach	15	St. Petersburg, St. Petersburg	10
Niceville Senior, Niceville	15	Seminole Senior, Seminole	10
North Miami Senior, North Miami	15	South Dade, South Miami	10
Brandon Senior, Brandon	14	South Plantation, Plantation	10
Cooper City, Cooper City	14	Florida High, Tallahassee	10
Seabreeze Senior, Daytona Beach	14	MacLay School, Tallahassee	10

HEADCOUNT BY DEPARTMENT AND SCHOOL/COLLEGE FOR FALL TERMS

	FALL 1984				FALL 1985				FALL 1986			
	UG	G	N	TOTAL	UG	G	N	TOTAL	UG	G	N	TOTAL
<u>College of Arts & Sciences</u>												
American Studies	12	2	0	14	8	1	0	9	11	0	0	11
Anthropology	38	17	0	55	45	12	0	57	44	16	1	61
Biological Science	794	98	1	893	735	93	0	828	809	77	1	887
Chemistry	153	82	0	235	134	87	0	221	153	98	0	251
Asian Studies	7	2	0	9	6	3	0	9	11	4	0	15
Classical Languages, Literature and Civilization	9	8	0	17	5	6	0	11	7	4	0	11
English	339	82	0	421	340	100	3	443	353	114	2	469
Geology	73	51	0	124	60	48	0	108	50	47	0	97
History	148	41	0	189	133	45	1	179	141	58	1	200
Humanities	44	52	0	96	41	49	1	91	42	57	1	100
Oceanography	0	43	0	43	0	37	0	37	0	39	0	39
Computer Science	56	2	0	58	600	63	3	666	427	90	2	519
Mathematics	920	71	0	991	118	35	1	154	110	56	1	167
Meteorology	96	38	0	134	87	42	0	129	81	53	0	134
Modern Languages	93	38	0	131	82	42	1	125	99	45	0	144
Geophysical Fluid Dynamics	0	4	0	4	0	2	0	2	0	4	0	4
Philosophy	19	21	1	41	16	16	0	32	18	19	0	37
Molecular Biophysics	0	12	0	12	0	12	0	12	0	13	0	13
Inter-American Studies	4	0	0	4	5	0	0	5	8	0	0	8
Physics	84	51	1	136	71	48	0	119	54	55	0	109
Psychology	642	137	0	779	641	130	2	773	677	131	0	808
Religion	18	13	0	31	17	11	0	28	9	14	0	23
Statistics	21	25	0	46	23	22	0	45	29	28	0	57
 Arts & Sciences Totals	 3570	 890	 3	 4463	 3167	 904	 12	 4083	 3133	 1022	 9	 4164
<u>College of Business</u>												
Accounting	506	52	0	558	485	49	1	535	546	48	0	594
Business Administration	154	59	2	215	70	67	4	141	32	63	14	109
Finance	421	48	1	470	441	42	3	486	516	38	2	556
Hospitality Administration	288	0	0	288	291	0	0	291	308	0	0	308
Risk and Insurance	110	1	0	111	134	0	0	134	130	2	0	132
Info. & Mgt. Science									137	0	0	137
Management	631	39	0	670	615	45	0	660	460	78	7	545
Marketing	436	21	0	457	478	17	0	495	491	14	3	508
Multi-National Business Operations	66	0	0	66	87	0	0	87	97	0	0	97
Business, NFA	1905	0	0	1905	2131	0	0	2131	2552	0	0	2552
 Business Totals	 4517	 220	 3	 4740	 4732	 220	 8	 4960	 5269	 243	 26	 5538

KEY: UG Undergraduate Students N Unclassified Students
G Graduate Students NFA Not Formally Admitted

Note: Headcount is majors only; students with majors undeclared are included in Unclassified (N).

HEADCOUNT BY DEPARTMENT AND SCHOOL/COLLEGE FOR FALL TERMS

	FALL 1984				FALL 1985				FALL 1986			
	UG	G	N	TOTAL	UG	G	N	TOTAL	UG	G	N	TOTAL
<u>College of Education</u>												
Childhood Education	432	192	0	624	446	209	2	657	373	100	0	473
Curriculum & Instruction	95	131	0	226	99	127	0	226	152	102	0	254
Educational Research, Development, & Foundations	0	132	1	133	0	142	0	142	0	153	0	153
Movement Science & Physical Education	151	70	0	221	139	95	0	234	127	96	0	223
Human Services & Studies	127	174	0	301	142	154	1	307	131	149	0	280
Educational Leadership	0	242	0	242	0	232	0	232	0	264	0	264
Special Ed. & Reading Education, NFA	250	0	0	250	255	0	0	255	292	0	0	292
Education Totals	1055	941	1	1997	1081	969	3	2053	1145	963	0	2108
<u>College of Home Economics</u>												
General Home Economics	12	1	0	13	18	0	0	18	8	0	0	8
Clothing, Textiles and Merchandising	465	18	0	483	431	14	0	445	416	11	0	427
Nutrition & Food Science	116	36	0	152	103	33	0	136	81	34	0	115
Home & Family Life	87	24	1	112	59	26	0	85	48	32	0	80
Home Economics Education	23	12	0	35	23	19	0	42	21	11	0	32
Home Economics Totals	703	91	1	795	634	92	0	726	574	88	0	662
<u>School of Library & Information Studies</u>												
	0	112	0	112	0	124	0	124	0	141	0	141
<u>School of Nursing</u>												
Nursing	272	0	0	272	266	3	1	270	218	12	2	232
Nursing, NFA	226	0	0	226	176	0	0	176	150	0	0	150
School of Nursing Totals	498	0	0	498	442	3	1	446	368	12	2	382
<u>School of Criminology</u>												
	581	60	0	641	510	67	0	577	483	69	0	552
<u>College of Law</u>												
	0	595	0	595	0	570	0	570	0	527	0	527

KEY: UG Undergraduate Students N Unclassified Students
G Graduate Students NFA Not Formally Admitted

HEADCOUNT BY DEPARTMENT AND SCHOOL/COLLEGE FOR FALL TERMS

	FALL 1984				FALL 1985				FALL 1986			
	UG	G	N	TOTAL	UG	G	N	TOTAL	UG	G	N	TOTAL
<u>College of Social Sciences</u>												
Political Science	499	36	4	539	542	39	1	582	514	45	3	562
Demography									0	3	0	3
Economics	383	49	0	432	492	53	0	545	529	58	0	587
Geography	41	15	0	56	52	15	1	68	52	18	1	71
International Affairs	169	35	0	204	186	28	1	215	182	22	6	210
Social Science	109	6	0	115	123	5	0	128	130	3	1	134
Sociology	90	31	0	121	89	24	0	113	85	34	0	119
Urban & Regional Planning	1	65	3	69	0	87	2	89	0	68	1	69
Public Administration	0	106	5	111	0	100	4	104	0	104	3	107
Social Sciences Totals	1292	343	12	1647	1484	351	9	1844	1492	355	15	1862
<u>School of Social Work</u>												
School of Social Work	141	275	3	419	104	323	0	427	98	260	12	370
<u>College of Communication</u>												
Communication	297	57	2	356	303	47	2	352	376	56	1	433
Communication Disorders	90	65	1	156	65	65	0	130	82	61	0	143
Communication, NFA	429	0	0	429	527	0	0	527	663	0	0	663
Communication Totals	816	122	3	941	895	112	2	1009	1121	117	1	1239
<u>School of Music</u>												
Music	366	266	0	632	390	276	0	666	369	309	0	678
Music, NFA	44	0	0	44	29	0	0	29	33	0	0	33
Music Totals	410	266	0	676	419	276	0	695	402	309	0	711
<u>School of Theatre</u>												
Theatre	180	47	1	228	136	40	6	182	105	43	4	152
Theatre, NFA	67	0	0	67	84	0	0	84	119	0	0	119
Theatre Totals	247	47	1	295	220	40	6	266	224	43	4	271
<u>School of Visual Arts</u>												
Art	249	26	2	277	222	26	0	248	223	34	3	260
Dance	37	4	0	41	33	3	0	36	29	17	1	47
Dance, NFA	26	0	0	26	33	0	0	33	22	0	0	22
Interior Design	253	28	0	281	243	28	1	272	266	24	0	290
Art Education	16	16	0	32	23	15	1	39	25	23	1	49
Art History	17	27	0	44	18	15	0	33	12	17	0	29
Visual Arts Totals	598	101	2	701	572	87	2	661	577	115	5	697

KEY: UG Undergraduate Students N Unclassified Students
G Graduate Students NFA Not Formally Admitted

HEADCOUNT BY DEPARTMENT AND SCHOOL/COLLEGE FOR FALL TERMS

	FALL 1984				FALL 1985				FALL 1986			
	UG	G	N	TOTAL	UG	G	N	TOTAL	UG	G	N	TOTAL
<u>College of Engineering</u>												
Electrical Eng./Systems	27	0	0	27	38	0	0	38	41	0	0	41
Electrical Eng./Elect.	63	0	0	63	68	0	0	68	79	0	0	79
Electrical Eng./Comp. Sci	85	0	0	85	107	0	0	107	142	0	0	142
Mechanical Engineering	44	0	0	44	83	0	0	83	148	0	0	148
Civil Engineering	36	0	0	36	63	0	0	63	82	0	0	82
Chemical Engineering	20	0	0	20	44	0	0	44	65	0	0	65
Engineering, NFA	156	0	0	156	174	0	0	174	143	0	0	143
Engineering Totals*	431	0	0	431	577	0	0	577	700	0	0	700
<u>Interdivisional</u>												
<u>Programs</u>	59	42	1	102	56	53	1	110	58	55	0	113
<u>Undecided</u>	1117	0	0	1117	0	0	1372	1372	1427	0	0	1427
<u>Special</u>	0	0	1150	1150	1258	0	0	1258	0	0	1674	1674
UNIVERSITY TOTALS	16035	4105	1180	21320	16151	4191	1416	21758	17071	4319	1748	23138

KEY: UG Undergraduate Students N Unclassified Students
G Graduate Students NFA Not Formally Admitted

*Prior to Fall 1984, only total headcount was reported for Engineering.

Source: Fall (Preliminary) Student Data Course File

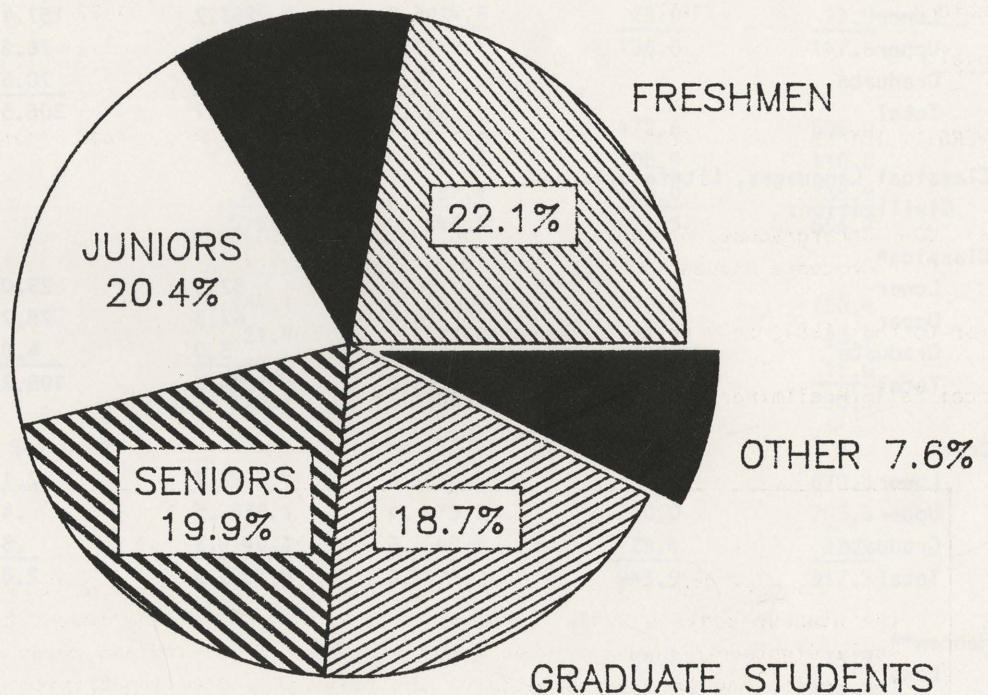
The Seminoles

The name "Seminoles" for Florida State University athletic teams was chosen by a vote of the student body in 1947. The Seminoles were a relatively recent tribe, originating in the early eighteenth century when Lower and Upper Creek Indians moved into North Florida after the region had been depopulated of the original Indian inhabitants of the area, principally (in North Florida) the Timucuans and the Apalachee. The word Seminole is generally believed to have come into use during the British period of Florida history, 1763-1784. In time, the word was applied to all Florida Indians, whether of Creek origin or not.

The origin of the Seminole tribe is with both the Upper and Lower Creeks who had fought a bitter war in the Alabama territory in 1813-1814. After this war, which culminated in Andrew Jackson's defeat of the Red Stick faction of the Upper Creeks, the remnants of the Red Sticks migrated south into Florida. These new Indians, as well as earlier arriving Lower and Upper Creeks came to be called Seminoles, a Creek word meaning either "runaway" or "seceder" (from the Creek Federation) or, as another source would have it, from the Creek words "Istis Seminole" meaning "wild people." While the Upper and Lower Creeks had been bitter enemies in the Alabama territory, they lived in harmony in Florida, widely dispersed over the territory, without any central authority.

STUDENT HEADCOUNT ENROLLMENT BY LEVEL FALL 1986

SOPHOMORES 11.4%



TOTAL HEADCOUNT = 23,138

SOURCE: Fall (Prelim) Student Data Course File

STUDENT CREDIT HOUR ENROLLMENT BY SCHOOL AND COLLEGE
ANNUAL FTE

	<u>1982-83</u>	<u>1983-84</u>	<u>1984-85</u>	<u>1985-86</u>
COLLEGE OF ARTS AND SCIENCES				
Anthropology				
Lower	55.2	42.9	42.9	44.0
Upper	28.5	29.8	35.1	34.1
Graduate	<u>11.5</u>	<u>10.0</u>	<u>7.3</u>	<u>6.8</u>
Total	95.2	82.7	85.3	84.9
Biological Science				
Lower	251.2	221.0	258.5	269.9
Upper	153.2	160.7	148.8	142.3
Graduate	<u>96.8</u>	<u>104.8</u>	<u>89.8</u>	<u>82.2</u>
Total	501.2	486.5	497.1	494.4
Chemistry				
Lower	195.9	161.2	157.4	162.1
Upper	77.6	85.7	78.6	71.8
Graduate	<u>74.3</u>	<u>72.8</u>	<u>70.5</u>	<u>70.0</u>
Total	347.8	319.7	306.5	303.9
Classical Languages, Literature, and Civilization:				
Classics*				
Lower	36.1	32.3	23.0	26.2
Upper	74.5	67.3	78.2	65.8
Graduate	<u>4.4</u>	<u>5.0</u>	<u>4.0</u>	<u>4.2</u>
Total	115.0	104.6	105.2	96.2
Greek				
Lower	1.6	2.7	2.1	2.7
Upper	.4	.5	.4	.4
Graduate	<u>.6</u>	<u>.3</u>	<u>.3</u>	<u>.4</u>
Total	2.6	3.5	2.8	3.5
Hebrew**				
Lower				2.2
Upper				0
Graduate				<u>0</u>
Total				2.2
Latin				
Lower	11.1	9.5	11.3	17.2
Upper	1.3	1.3	2.4	1.6
Graduate	<u>.7</u>	<u>1.1</u>	<u>.5</u>	<u>.7</u>
Total	13.1	11.9	14.2	19.5

*Includes Classical Civilizations and Literature

** Hebrew was offered for the first time in 1985-86 under its own course prefix.

Note: Schools and colleges are listed in the order in which they appear in the Operating Budget; departments within the Schools and Colleges are listed in alphabetical order.

STUDENT CREDIT HOUR ENROLLMENT BY SCHOOL AND COLLEGE
ANNUAL FTE

	<u>1982-83</u>	<u>1983-84</u>	<u>1984-85</u>	<u>1985-86</u>
Classical Languages, Literature, and Civilization Totals				
Lower	48.8	44.5	36.4	48.3
Upper	76.2	69.1	81.0	67.8
Graduate	<u>5.7</u>	<u>6.4</u>	<u>4.8</u>	<u>5.3</u>
Total	130.7	120.0	122.2	121.4
English				
Lower	472.2	486.6	531.4	556.4
Upper	164.2	160.5	155.5	156.0
Graduate	<u>52.8</u>	<u>63.8</u>	<u>65.3</u>	<u>66.1</u>
Total	689.2	710.9	752.2	778.5
Geology				
Lower	113.6	96.1	93.5	118.0
Upper	27.1	27.4	18.6	11.7
Graduate	<u>24.4</u>	<u>24.6</u>	<u>23.9</u>	<u>17.9</u>
Total	165.1	148.1	136.0	147.6
History				
Lower	429.0	395.9	472.6	505.0
Upper	113.5	113.5	108.9	110.8
Graduate	<u>36.5</u>	<u>37.2</u>	<u>40.0</u>	<u>38.9</u>
Total	579.0	546.6	621.5	654.7
Humanities				
Lower	184.1	149.3	149.6	150.4
Upper	21.4	21.8	24.7	28.9
Graduate	<u>20.6</u>	<u>17.2</u>	<u>17.6</u>	<u>11.6</u>
Total	226.1	188.3	191.9	190.9
Mathematics and Computer Science*				
Lower	503.4	650.5	704.5	679.3
Upper	536.1	475.2	210.0	205.5
Graduate	<u>48.3</u>	<u>49.4</u>	<u>29.4</u>	<u>32.5</u>
Total	1087.8	1175.2	943.9	917.3
Computer Science				
Lower			64.2	73.5
Upper			134.2	134.3
Graduate			<u>17.1</u>	<u>29.3</u>
Total			215.5	237.1
Meteorology				
Lower	85.1	72.7	77.5	83.7
Upper	19.7	15.5	14.5	15.9
Graduate	<u>24.6</u>	<u>23.7</u>	<u>19.4</u>	<u>24.1</u>
Total	129.4	111.9	111.4	123.7

*The Department of Mathematics and Computer Science was split into two separate departments in July 1984, therefore 1984-85 data under Mathematics and Computer Science reflects Mathematics only.

STUDENT CREDIT HOUR ENROLLMENT BY SCHOOL AND COLLEGE
ANNUAL FTE

	<u>1982-83</u>	<u>1983-84</u>	<u>1984-85</u>	<u>1985-86</u>
Modern Languages:				
Chinese				
Lower	3.9	3.3	3.5	3.2
Upper	.6	1.0	.5	.4
Graduate	<u>.2</u>	<u>.1</u>	<u>.4</u>	<u>0</u>
Total	4.7	4.4	4.4	3.6
Czechoslovakian				
Lower	0	0	0	0
Upper	0	0	.1	0
Graduate	<u>0</u>	<u>0</u>	<u>.1</u>	<u>0</u>
Total	0	0	.2	0
French				
Lower	136.5	130.2	111.8	105.4
Upper	14.3	14.1	14.9	16.4
Graduate	<u>8.2</u>	<u>8.3</u>	<u>9.3</u>	<u>9.6</u>
Total	159.0	152.6	136.0	131.4
German				
Upper	56.5	66.9	52.2	48.7
Lower	8.8	6.8	9.5	8.8
Graduate	<u>5.4</u>	<u>8.3</u>	<u>6.6</u>	<u>7.4</u>
Total	70.7	82.0	68.3	64.9
Italian				
Lower	26.3	30.5	44.5	37.3
Upper	3.6	5.2	7.6	6.2
Graduate	<u>1.9</u>	<u>2.2</u>	<u>2.0</u>	<u>1.0</u>
Total	31.8	37.9	54.1	44.5
Japanese				
Lower	3.3	3.1	2.4	4.6
Upper	.2	.3	.3	.2
Graduate	<u>.2</u>	<u>.4</u>	<u>0</u>	<u>.2</u>
Total	3.7	3.8	2.7	5.0
Modern Languages				
Lower	1.5	0	0	0
Upper	16.5	6.2	5.9	7.2
Graduate	<u>1.3</u>	<u>1.6</u>	<u>2.8</u>	<u>.9</u>
Total	19.3	7.8	8.7	8.1
Portuguese				
Lower	0	0	0	0
Upper	1.1	1.3	.1	1.0
Graduate	<u>.1</u>	<u>.2</u>	<u>0</u>	<u>.1</u>
Total	1.2	1.5	.1	1.1
Russian				
Lower	11.7	10.5	9.0	10.9
Upper	3.2	3.9	3.0	3.4
Graduate	<u>1.6</u>	<u>2.6</u>	<u>1.1</u>	<u>1.6</u>
Total	16.5	17.0	13.1	15.9

STUDENT CREDIT HOUR ENROLLMENT BY SCHOOL AND COLLEGE
ANNUAL FTE

	<u>1982-83</u>	<u>1983-84</u>	<u>1984-85</u>	<u>1985-86</u>
Serbo-Croatian				
Lower	0	0	0	0
Upper	.1	.2	.2	.2
Graduate	<u>0</u>	<u>.2</u>	<u>0</u>	<u>0</u>
Total	.1	.4	.2	.2
Slavic				
Lower	0	0	0	0
Upper	.3	.2	.7	.4
Graduate	<u>.3</u>	<u>0</u>	<u>0</u>	<u>0</u>
Total	.6	.2	.7	.4
Spanish				
Lower	196.6	197.0	175.7	152.4
Upper	27.4	22.3	26.9	26.5
Graduate	<u>7.2</u>	<u>8.5</u>	<u>10.0</u>	<u>10.2</u>
Total	231.2	227.8	212.6	189.1
Modern Language Totals				
Lower	436.3	441.5	399.1	362.5
Upper	76.1	61.5	69.7	70.7
Graduate	<u>26.1</u>	<u>32.4</u>	<u>32.3</u>	<u>31.0</u>
Total	538.5	535.4	501.1	464.2
Oceanography				
Lower	23.0	18.5	21.1	29.2
Upper	1.5	.8	.6	2.0
Graduate	<u>25.9</u>	<u>29.3</u>	<u>25.8</u>	<u>24.9</u>
Total	50.4	48.6	47.5	56.1
Philosophy				
Lower	86.9	75.8	80.2	93.8
Upper	19.9	17.6	19.4	15.0
Graduate	<u>9.8</u>	<u>12.4</u>	<u>11.7</u>	<u>13.8</u>
Total	116.6	105.8	111.3	122.6
Physics				
Lower	149.3	132.8	123.3	129.2
Upper	58.5	54.2	53.6	42.3
Graduate	<u>45.3</u>	<u>47.8</u>	<u>40.7</u>	<u>38.6</u>
Total	253.1	234.8	217.6	210.1
Psychology				
Lower	206.3	197.2	199.6	188.4
Upper	318.5	305.8	279.7	269.3
Graduate	<u>99.3</u>	<u>108.2</u>	<u>101.1</u>	<u>102.3</u>
Total	624.1	611.2	580.4	560.0
Religion				
Lower	144.6	129.5	126.9	158.6
Upper	29.5	27.2	43.7	36.0
Graduate	<u>9.7</u>	<u>7.8</u>	<u>11.4</u>	<u>11.2</u>
Total	183.8	164.5	182.0	205.8

STUDENT CREDIT HOUR ENROLLMENT BY SCHOOL AND COLLEGE
ANNUAL FTE

	<u>1982-83</u>	<u>1983-84</u>	<u>1984-85</u>	<u>1985-86</u>
COLLEGE OF EDUCATION				
Childhood, Reading, and Special Education*				
Lower	0	0	0	
Upper	227.1	252.2	293.3	
Graduate	<u>108.1</u>	<u>120.6</u>	<u>122.0</u>	
Total	335.2	372.8	415.3	
Childhood Education				
Lower				0
Upper				246.4
Graduate				<u>96.2</u>
Total				342.6
Special Education and Reading				
Lower				0
Upper				29.0
Graduate				<u>22.9</u>
Total				51.9
Curriculum and Instruction				
Lower	0	0	0	0
Upper	64.1	88.8	93.3	78.0
Graduate	<u>54.5</u>	<u>58.8</u>	<u>53.3</u>	<u>55.3</u>
Total	118.6	147.6	146.6	133.3
Educational Leadership				
Lower	0	0	0	0
Upper	4.9	1.9	1.4	.4
Graduate	<u>180.2</u>	<u>197.7</u>	<u>158.1</u>	<u>158.7</u>
Total	185.1	199.6	159.5	159.1
Educational Research, Development, and Foundations				
Lower	0	0	0	0
Upper	77.6	86.9	79.3	64.2
Graduate	<u>145.9</u>	<u>147.0</u>	<u>144.1</u>	<u>160.6</u>
Total	223.5	233.9	223.4	224.8
Human Services and Studies				
Lower	4.3	4.0	1.9	4.5
Upper	172.9	163.2	157.5	145.7
Graduate	<u>97.9</u>	<u>97.9</u>	<u>122.0</u>	<u>106.8</u>
Total	275.1	265.1	281.4	257.0
Movement Science and Physical Education				
Lower	20.6	23.2	58.6	29.5
Upper	112.3	118.2	102.2	101.2
Graduate	<u>27.9</u>	<u>26.1</u>	<u>36.4</u>	<u>46.6</u>
Total	160.8	167.5	197.2	177.3

*The department of Childhood, Reading, and Special Education was divided into two departments beginning in 1985-86.

STUDENT CREDIT HOUR ENROLLMENT BY SCHOOL AND COLLEGE
ANNUAL FTE

	<u>1982-83</u>	<u>1983-84</u>	<u>1984-85</u>	<u>1985-86</u>
College of Education Totals				
Lower	24.9	27.2	60.5	34.0
Upper	658.9	711.2	727.0	664.9
Graduate	<u>614.5</u>	<u>648.1</u>	<u>635.9</u>	<u>647.1</u>
Total	1298.3	1386.5	1423.4	1346.0
COLLEGE OF HOME ECONOMICS				
Clothing, Textiles and Merchandising				
Lower	55.0	56.8	39.1	35.3
Upper	118.9	129.4	154.6	152.9
Graduate	<u>4.7</u>	<u>5.9</u>	<u>5.3</u>	<u>3.9</u>
Total	178.6	192.1	199.0	192.1
Home and Family Life				
Lower	59.1	79.9	115.4	119.0
Upper	110.7	116.0	87.2	76.9
Graduate	<u>31.0</u>	<u>34.5</u>	<u>28.3</u>	<u>35.9</u>
Total	200.8	230.4	230.9	231.8
Home Economics Education				
Lower	0	0	0	0
Upper	31.8	33.8	27.0	26.4
Graduate	<u>12.0</u>	<u>15.5</u>	<u>10.6</u>	<u>13.6</u>
Total	43.8	49.3	37.6	40.0
Nutrition & Food Science				
Lower	128.3	111.0	98.9	87.8
Upper	33.9	34.6	35.8	25.2
Graduate	<u>13.5</u>	<u>10.9</u>	<u>18.3</u>	<u>9.7</u>
Total	175.7	156.5	153.0	122.7
College of Home Economics Totals				
Lower	242.4	247.7	253.4	242.1
Upper	295.3	313.8	304.6	281.4
Graduate	<u>61.2</u>	<u>66.8</u>	<u>62.5</u>	<u>63.1</u>
Total	598.9	628.3	620.5	586.6
SCHOOL OF LIBRARY & INFORMATION STUDIES				
Lower	3.6	2.3	.5	.4
Upper	15.9	8.9	6.9	7.6
Graduate	<u>82.2</u>	<u>78.9</u>	<u>76.9</u>	<u>95.2</u>
Total	101.7	90.1	84.3	103.2
SCHOOL OF NURSING				
Lower	0	0	0	0
Upper	196.6	198.4	209.0	192.7
Graduate	<u>0</u>	<u>0</u>	<u>0</u>	<u>2.6</u>
Total	196.6	198.4	209.0	195.3

STUDENT CREDIT HOUR ENROLLMENT BY SCHOOL AND COLLEGE
ANNUAL FTE

	<u>1982-83</u>	<u>1983-84</u>	<u>1984-85</u>	<u>1985-86</u>
SCHOOL OF CRIMINOLOGY				
Lower	19.9	18.5	10.4	12.8
Upper	343.6	368.3	353.9	297.1
Graduate	<u>31.8</u>	<u>33.7</u>	<u>33.8</u>	<u>40.6</u>
Total	<u>395.3</u>	<u>420.5</u>	<u>398.1</u>	<u>350.5</u>
COLLEGE OF LAW				
Lower	0	0	0	0
Upper	0	0	0	0
Graduate	<u>568.8</u>	<u>583.8</u>	<u>559.8</u>	<u>521.5</u>
Total	<u>568.8</u>	<u>583.8</u>	<u>559.8</u>	<u>521.5</u>
COLLEGE OF SOCIAL SCIENCES				
Black Studies				
Lower	0	0	0	0
Upper	2.4	.1	3.7	1.6
Graduate	<u>0</u>	<u>0</u>	<u>0</u>	<u>0</u>
Total	<u>2.4</u>	<u>.1</u>	<u>3.7</u>	<u>1.6</u>
Economics				
Lower	306.5	286.2	277.3	290.0
Upper	86.1	124.8	159.1	187.1
Graduate	<u>38.1</u>	<u>39.4</u>	<u>38.4</u>	<u>35.8</u>
Total	<u>430.7</u>	<u>450.4</u>	<u>474.8</u>	<u>512.9</u>
Geography				
Lower	72.3	73.3	79.3	93.2
Upper	46.9	55.5	57.6	53.6
Graduate	<u>9.2</u>	<u>9.7</u>	<u>9.5</u>	<u>9.6</u>
Total	<u>128.4</u>	<u>138.5</u>	<u>146.4</u>	<u>156.4</u>
International Affairs				
Lower	0	0	0	0
Upper	.1	.2	.4	.2
Graduate	<u>4.4</u>	<u>2.9</u>	<u>2.3</u>	<u>2.4</u>
Total	<u>4.5</u>	<u>3.1</u>	<u>2.7</u>	<u>2.6</u>
Political Science				
Lower	81.5	71.9	57.6	54.3
Upper	214.4	243.2	235.8	224.1
Graduate	<u>38.2</u>	<u>36.2</u>	<u>24.5</u>	<u>29.1</u>
Total	<u>334.1</u>	<u>351.3</u>	<u>317.9</u>	<u>307.5</u>
Public Administration				
Lower	0	0	0	0
Upper	37.2	33.4	30.3	33.4
Graduate	<u>76.9</u>	<u>72.0</u>	<u>73.8</u>	<u>74.6</u>
Total	<u>114.1</u>	<u>105.4</u>	<u>104.1</u>	<u>108.0</u>
Social Sciences				
Lower	0	0	0	0
Upper	.4	.5	.4	1.8
Graduate	<u>.2</u>	<u>.2</u>	<u>.4</u>	<u>.9</u>
Total	<u>.6</u>	<u>.7</u>	<u>.8</u>	<u>2.7</u>

STUDENT CREDIT HOUR ENROLLMENT BY SCHOOL AND COLLEGE
ANNUAL FTE

	<u>1982-83</u>	<u>1983-84</u>	<u>1984-85</u>	<u>1985-86</u>
Sociology				
Lower	147.5	169.0	143.9	158.7
Upper	85.4	71.8	55.8	53.8
Graduate	<u>29.5</u>	<u>36.3</u>	<u>33.3</u>	<u>27.5</u>
Total	262.4	277.1	233.0	240.0
Urban and Regional Planning				
Lower	0	0	0	0
Upper	12.4	12.2	14.6	17.8
Graduate	<u>49.4</u>	<u>47.1</u>	<u>42.3</u>	<u>51.5</u>
Total	61.8	59.3	56.9	69.3
College of Social Sciences Totals				
Lower	607.8	600.5	558.1	596.2
Upper	485.3	541.7	557.7	573.4
Graduate	<u>245.9</u>	<u>243.8</u>	<u>224.5</u>	<u>231.4</u>
Total	1339.0	1385.9	1340.3	1401.0
SCHOOL OF SOCIAL WORK				
Lower	4.2	4.6	3.7	2.9
Upper	136.8	110.3	95.3	85.9
Graduate	<u>242.7</u>	<u>240.2</u>	<u>231.5</u>	<u>251.7</u>
Total	383.7	355.1	330.5	340.5
COLLEGE OF COMMUNICATION				
Communication				
Lower	40.2	41.9	35.8	27.4
Upper	356.0	339.7	313.0	335.5
Graduate	<u>39.9</u>	<u>40.3</u>	<u>35.3</u>	<u>35.7</u>
Total	436.1	421.9	384.1	398.6
Communication Disorders				
Lower	0	0	0	0
Upper	67.7	65.6	53.4	44.3
Graduate	<u>53.6</u>	<u>49.5</u>	<u>44.7</u>	<u>49.7</u>
Total	121.3	115.1	98.1	94.0
College of Communication Totals				
Lower	40.2	41.9	35.8	27.4
Upper	423.7	405.3	366.4	379.8
Graduate	<u>93.5</u>	<u>89.8</u>	<u>80.0</u>	<u>85.4</u>
Total	557.4	537.0	482.2	492.6
SCHOOL OF MUSIC				
Lower	271.7	217.4	187.5	171.8
Upper	139.9	148.2	139.7	126.7
Graduate	<u>169.5</u>	<u>192.3</u>	<u>182.3</u>	<u>179.2</u>
Total	581.1	557.9	509.5	477.7

STUDENT CREDIT HOUR ENROLLMENT BY SCHOOL AND COLLEGE
ANNUAL FTE

	<u>1982-83</u>	<u>1983-84</u>	<u>1984-85</u>	<u>1985-86</u>
SCHOOL OF THEATRE				
Lower	33.6	137.6	32.3	29.8
Upper	279.2	225.1	319.2	341.6
Graduate	<u>51.8</u>	<u>42.1</u>	<u>38.6</u>	<u>34.7</u>
Total	364.6	404.8	390.1	406.1
SCHOOL OF VISUAL ARTS				
Studio Art				
Lower	44.4	46.5	46.6	42.4
Upper	110.3	110.4	109.0	102.8
Graduate	<u>26.6</u>	<u>21.7</u>	<u>21.5</u>	<u>23.5</u>
Total	181.3	178.6	177.1	168.7
Art Education				
Lower	0	0	0	0
Upper	20.9	23.2	23.2	20.8
Graduate	<u>6.0</u>	<u>9.7</u>	<u>9.7</u>	<u>10.9</u>
Total	26.9	32.9	32.9	31.7
Art History				
Lower	0	0	0	0
Upper	57.4	57.2	53.5	55.4
Graduate	<u>12.9</u>	<u>11.4</u>	<u>15.4</u>	<u>12.9</u>
Total	70.3	68.6	68.9	68.3
Dance				
Lower	36.9	37.6	29.7	27.0
Upper	14.4	17.1	13.9	12.3
Graduate	<u>4.2</u>	<u>4.3</u>	<u>2.6</u>	<u>4.8</u>
Total	55.5	59.0	46.2	44.1
Interior Design				
Lower	0	0	0	0
Upper	140.8	145.3	136.4	112.2
Graduate	<u>23.9</u>	<u>20.6</u>	<u>20.8</u>	<u>18.0</u>
Total	164.7	165.9	157.2	130.2
School of Visual Arts Totals				
Lower	81.3	84.1	76.3	69.4
Upper	343.8	353.2	336.0	303.5
Graduate	<u>73.6</u>	<u>67.7</u>	<u>70.0</u>	<u>70.1</u>
Total	498.7	505.0	482.3	443.0
International Program:				
Slavic & East European Studies				
Lower	0	0	0	0
Upper	0	.1	.1	.1
Graduate	<u>2.7</u>	<u>3.6</u>	<u>2.3</u>	<u>2.7</u>
Total	2.7	3.7	2.4	2.8

ASSOCIATE VICE PRESIDENT AND DIRECTOR, INSTITUTE OF SCIENCE AND PUBLIC AFFAIRS--

Edward A. Fernald

FLORIDA CENTER FOR PUBLIC MANAGEMENT--William F. Moeller

DIRECTOR, SUS INSTITUTE OF GOVERNMENT--John S. Dailey

DIRECTOR, UNIVERSITY LIBRARIES--Charles E. Miller

ASSOCIATE VICE PRESIDENT AND DIRECTOR, CENTER FOR PROFESSIONAL

DEVELOPMENT AND PUBLIC SERVICE--Mary L. Pankowski

COMMUNITY COLLEGE AND INTERINSTITUTIONAL RELATIONS--

David F. Dahlen

DIRECTOR, LEARNING SYSTEMS INSTITUTE--Robert M. Morgan

VICE PRESIDENT FOR FINANCE AND ADMINISTRATION (VICE CHAIRMAN, EXECUTIVE COUNCIL)--B. J. Hodge

ENVIRONMENTAL HEALTH & SAFETY--John U. Martin III

PURCHASING & RECEIVING--Walter B. Parramore

BUSINESS SERVICES--Barbara L. Johnson

PUBLIC SAFETY--William A. Tanner

PERSONNEL RELATIONS--J. R. Robinson

UNIVERSITY CONTROLLER--Robert W. Bodine

PHYSICAL PLANT--Thomas N. Knowles

FACILITIES MANAGEMENT--Steven H. Adamick

VICE PRESIDENT FOR STUDENT AFFAIRS (MEMBER, EXECUTIVE COUNCIL)--Bobby E. Leach

ASSOCIATE VICE PRESIDENT FOR STUDENT AFFAIRS--Robert Kimmel

RESIDENT STUDENT DEVELOPMENT--Sherrill W. Ragans

STUDENT DEVELOPMENT--James A. Hayes

UNIVERSITY UNION--Nancy A. Turner

CAREER DEVELOPMENT SERVICES--Robert G. O'Neal

STUDENT COUNSELING CENTER--Daniel J. Montgomery

SPECIAL PROGRAMS--Richard Mashburn Jr.

STUDENT HEALTH SERVICES--N. Scott Kent

STUDENT GOVERNMENT ASSOCIATION--Zelda Zarco

VICE PRESIDENT FOR PUBLIC AFFAIRS (MEMBER, EXECUTIVE COUNCIL)--Patrick W. Hogan

ASSOCIATE VICE PRESIDENT, UNIVERSITY RELATIONS--W. Gerry Gilmer

MEDIA RELATIONS--Annette Lee

PUBLICATIONS--Pam Morris

SPECIAL EVENTS--Susan Lazier

ASSOCIATE VICE PRESIDENT FOR GOVERNMENTAL RELATIONS--Barbara J. Palmer

WFSU-TV--Edward L. Herp

WFSU-FM--Madison L. Hodges

VICE PRESIDENT FOR DEVELOPMENT (MEMBER, EXECUTIVE COUNCIL)--Harold D. Wilkins, Jr.

VICE PRESIDENT FOR RESEARCH & GRADUATE STUDIES (MEMBER, EXECUTIVE COUNCIL)--Robert M. Johnson

ASSOCIATE VICE PRESIDENT FOR RESEARCH--TBA

DEAN, GRADUATE STUDIES--Russell H. Johnsen

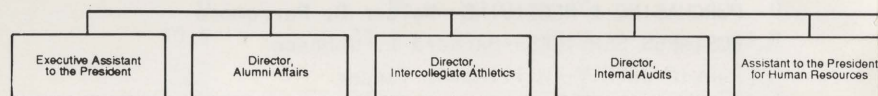
Source: Office of the President



The Florida State Organization

3/1

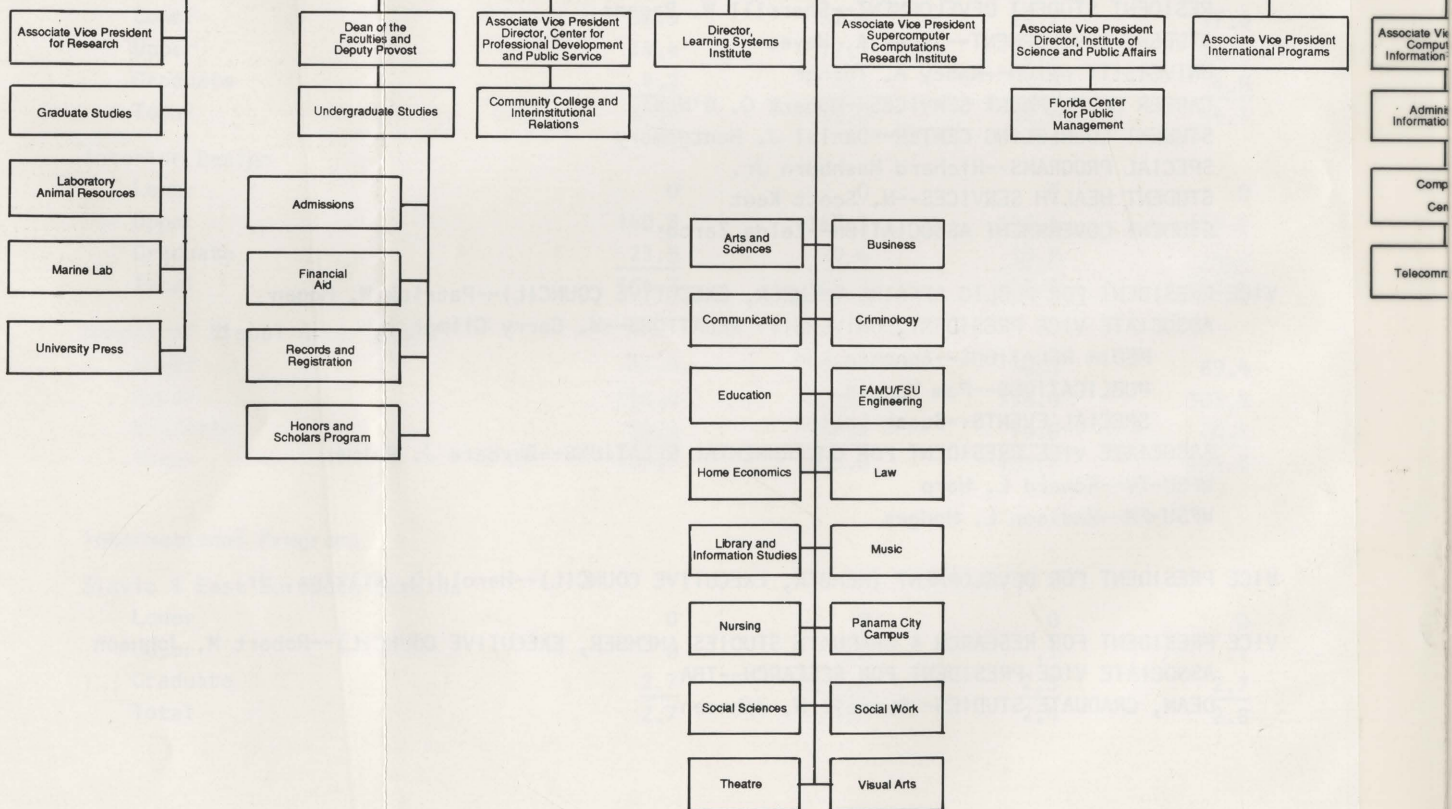
Presi



Vice President for
Research and
Graduate Studies

Provost and
Vice President for
Academic Affairs
(Chairman, Executive Council)

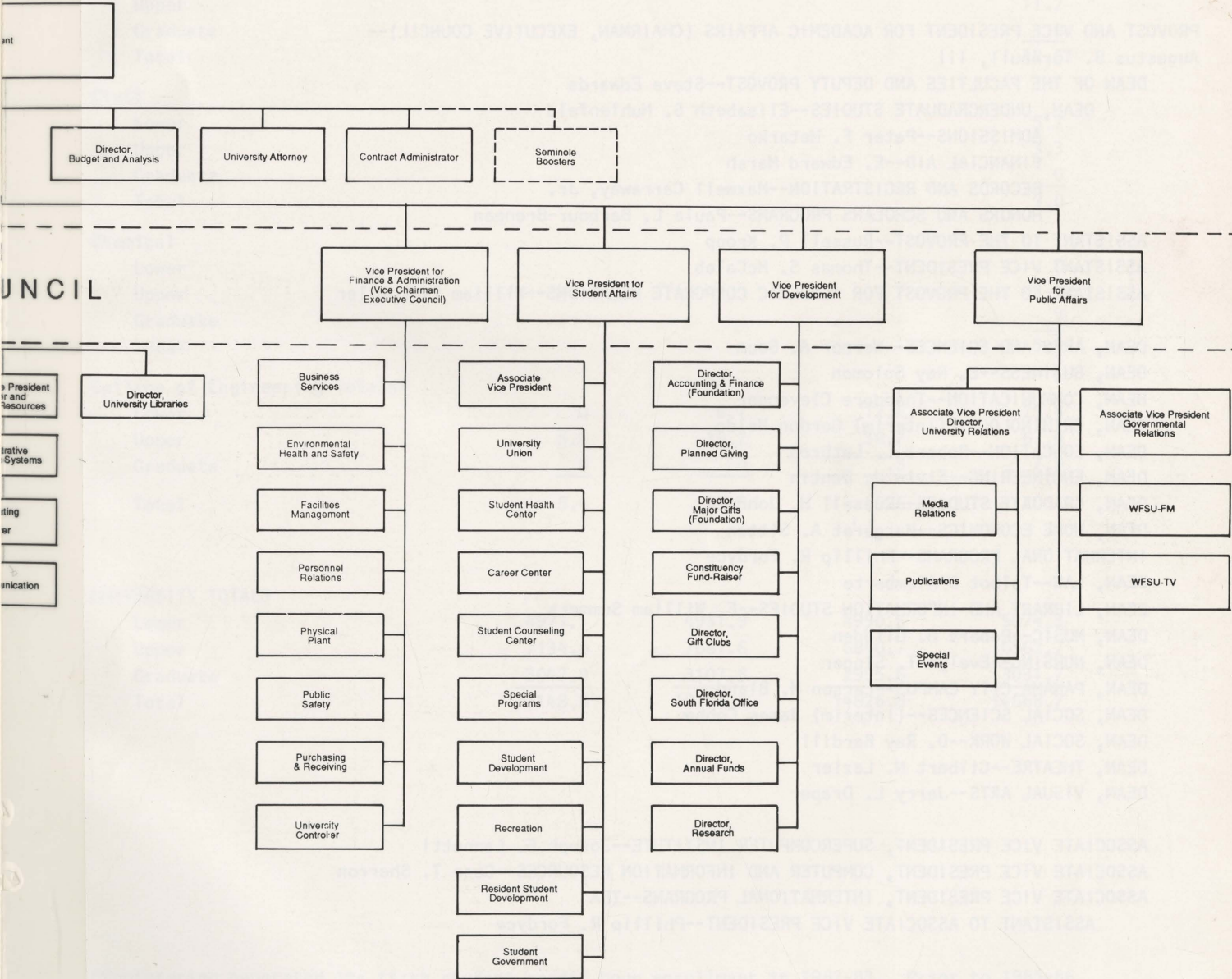
EXECUTIVE CO





University
Organization Chart

1987



ORGANIZATIONAL STRUCTURE & CURRENT INCUMBENT

PRESIDENT--Bernard F. Sliger

EXECUTIVE ASSISTANT TO THE PRESIDENT--Ruth G. Wester

DIRECTOR, ALUMNI AFFAIRS--James H. Melton

DIRECTOR, INTERCOLLEGIATE ATHLETICS--Cecil W. Ingram, Jr.

DIRECTOR, INTERNAL AUDITS--Ernest M. Williams, Jr.

ASSISTANT TO THE PRESIDENT FOR HUMAN RESOURCES--Freddie L. Groomes

EXECUTIVE DIRECTOR, PLANNING AND ANALYSIS--Grady W. Rea

UNIVERSITY ATTORNEY--Gerald B. Jaski

ASSISTANT TO THE PRESIDENT FOR CONTRACT ADMINISTRATION--Lillian H. Mohr

PROVOST AND VICE PRESIDENT FOR ACADEMIC AFFAIRS (CHAIRMAN, EXECUTIVE COUNCIL)--

Augustus B. Turnbull, III

DEAN OF THE FACULTIES AND DEPUTY PROVOST--Steve Edwards

DEAN, UNDERGRADUATE STUDIES--Elisabeth S. Muhlenfeld

ADMISSIONS--Peter F. Metarko

FINANCIAL AID--E. Edward Marsh

RECORDS AND REGISTRATION--Maxwell Carraway, Jr.

HONORS AND SCHOLARS PROGRAMS--Paula L. Barbour-Brennan

ASSISTANT TO THE PROVOST--Russell P. Kropp

ASSISTANT VICE PRESIDENT--Thomas S. McCaleb

ASSISTANT TO THE PROVOST FOR ACADEMIC CORPORATE RELATIONS--William F. Moeller

DEAN, ARTS AND SCIENCES--Werner A. Baum

DEAN, BUSINESS--E. Ray Solomon

DEAN, COMMUNICATION--Theodore Clevenger

DEAN, CRIMINOLOGY--(Interim) Gordon Waldo

DEAN, EDUCATION--Robert L. Lathrop

DEAN, ENGINEERING--Elvin J. Dantin

DEAN, GRADUATE STUDIES--Russell H. Johnsen

DEAN, HOME ECONOMICS--Margaret A. Sitton

INTERNATIONAL PROGRAMS--Phillip R. Fordyce

DEAN, LAW--Talbot D'Alemberte

DEAN, LIBRARY AND INFORMATION STUDIES--F. William Summers

DEAN, MUSIC--Robert B. Glidden

DEAN, NURSING--Evelyn T. Singer

DEAN, PANAMA CITY CAMPUS--Larson M. Bland

DEAN, SOCIAL SCIENCES--(Interim) James Cobbe

DEAN, SOCIAL WORK--D. Ray Bardill

DEAN, THEATRE--Gilbert N. Lazier

DEAN, VISUAL ARTS--Jerry L. Draper

ASSOCIATE VICE PRESIDENT, SUPERCOMPUTER INSTITUTE--Joseph E. Lannutti

ASSOCIATE VICE PRESIDENT, COMPUTER AND INFORMATION RESOURCES--Gene T. Sherron

ASSOCIATE VICE PRESIDENT, INTERNATIONAL PROGRAMS--TBA

ASSISTANT TO ASSOCIATE VICE PRESIDENT--Phillip R. Fordyce

STUDENT CREDIT HOUR ENROLLMENT BY SCHOOL AND COLLEGE
ANNUAL FTE

	<u>1982-83</u>	<u>1983-84</u>	<u>1984-85</u>	<u>1985-86</u>
COLLEGE OF ENGINEERING				
Electrical				
Lower				18.6
Upper				68.3
Graduate				<u>6.6</u>
Total				93.5
Mechanical				
Lower				1.4
Upper				11.2
Graduate				<u>0</u>
Total				12.6
Civil				
Lower				5.7
Upper				3.3
Graduate				<u>0</u>
Total				9.0
Chemical				
Lower				0
Upper				4.3
Graduate				<u>.7</u>
Total				5.0
College of Engineering Totals*				
Lower	0	6.7	12.6	25.8
Upper	5.4	19.2	36.7	87.0
Graduate	<u>0</u>	<u>0</u>	<u>.3</u>	<u>7.3</u>
Total	5.4	25.9	49.6	120.1
UNIVERSITY TOTALS				
Lower	4971.1	4931.9	4990.5	5074.3
Upper	7134.8	7067.6	6840.7	6562.7
Graduate	<u>3042.9</u>	<u>3107.5</u>	<u>2995.6</u>	<u>3031.7</u>
Total	15148.8	15107.0	14826.8	14668.7

*Engineering generated its first student credit hour enrollment in 1982-83. Prior to 1985-86 all SCH's generated by the College were combined.

Source: Final Student Data Course File

STUDENT HEADCOUNT BY DISCIPLINE AND LEVEL
FALL, 1986

<u>DISCIPLINE*</u>	<u>UNCLASSIFIED</u>	<u>LOWER DIVISION</u>	<u>UPPER DIVISION</u>	<u>TOTAL UNDERGRADUATE</u>
Architecture & Environmental Design	-	89	177	266
Area & Ethnic Studies	-	3	27	30
Business & Management	-	2,458	2,811	5,269
Communications	-	543	496	1,039
Computer Science	-	219	208	427
Education	-	388	868	1,256
Engineering	-	344	356	700
Foreign Languages	-	28	72	100
Allied Health	-	20	65	85
Health Sciences	-	132	318	450
Home Economics	-	169	384	553
Law	-	-	-	-
Letters	-	111	248	359
Liberal/General Studies	-	9	33	42
Library & Archival Studies	-	-	6	6
Life Sciences	-	464	340	804
Mathematics	-	61	78	139
Parks & Recreation	-	6	84	90
Philosophy, Religion, & Theology	-	6	21	27
Physical Sciences	-	125	174	299
Psychology	-	325	352	677
Protective Services	-	121	362	483
Public Affairs	-	20	78	98
Social Sciences	-	353	1,324	1,677
Visual & Performing Arts	-	358	410	768
No Category	1,748	1,389	38	1,427
Total	1,748	7,741	9,330	17,071

*These are new CIP discipline categories effective Fall, 1984. See following table for a list of programs within each CIP category.

Source: Fall (Preliminary) Student Data Course File

STUDENT HEADCOUNT BY DISCIPLINE AND LEVEL
FALL, 1986

<u>DISCIPLINE*</u>	<u>BEGINNING GRADUATE</u>	<u>ADVANCED GRADUATE</u>	<u>TOTAL GRADUATE</u>	<u>GRAND TOTAL</u>
Architecture & Environmental Design	24	68	92	358
Area & Ethnic Studies	3	3	6	36
Business & Management	109	134	243	5,512
Communications	18	38	56	1,095
Computer Science	27	63	90	517
Education	203	821	1,024	2,280
Engineering	-	-	-	700
Foreign Languages	9	36	45	145
Allied Health	17	33	50	135
Health Sciences	16	57	73	523
Home Economics	27	104	131	684
Law	527	-	527	527
Letters	22	96	118	477
Liberal/General Studies	15	42	57	99
Library & Archival Studies	53	88	141	147
Life Sciences	14	63	77	881
Mathematics	38	46	84	223
Parks & Recreation	9	5	14	104
Philosophy, Religion, & Theology	15	18	33	60
Physical Sciences	82	227	309	608
Psychology	21	110	131	808
Protective Services	21	48	69	552
Public Affairs	131	233	364	462
Social Sciences	64	193	257	1,934
Visual & Performing Arts	107	221	328	1,096
No Category	-	-	-	3,175
Totals	1,572	2,747	4,319	23,138

*These are new CIP discipline categories effective Fall, 1984.

Source: Fall (Preliminary) Student Data Course File

GEOGRAPHICAL ORIGIN OF STUDENTS BY
FLORIDA COUNTY, FALL TERMS

	Fall Semester <u>1982</u>	Fall Semester <u>1983</u>	Fall Semester <u>1984</u>	Fall Semester <u>1985</u>	Fall Semester <u>1986</u>
Alachua	263	242	234	231	291
Baker	19	13	11	4	6
Bay	783	713	773	784	859
Bradford	13	10	15	9	11
Brevard	542	462	458	482	512
Broward	1,349	1,335	1,436	1,445	1,500
Calhoun	26	40	44	41	48
Charlotte	46	45	53	60	65
Citrus	41	35	32	25	29
Clay	139	149	136	148	173
Collier	102	85	84	91	95
Columbia	53	63	75	67	66
Dade	1,863	1,643	1,522	1,526	1,658
DeSoto	7	5	4	4	5
Dixie	9	5	7	11	5
Duval	947	963	986	953	1,051
Escambia	400	365	348	379	430
Flagler	14	14	11	14	10
Franklin	26	27	28	23	26
Gadsden	196	178	197	161	167
Gilchrist	6	5	3	7	6
Glades	0	1	2	1	3
Gulf	29	31	36	38	37
Hamilton	11	11	7	10	8
Hardee	15	11	13	10	7
Hendry	14	14	21	18	16
Hernando	38	47	55	60	57
Highlands	41	36	29	33	37
Hillsborough	721	661	640	658	725
Holmes	23	26	26	22	24
Indian River	79	99	91	84	107
Jackson	117	118	130	150	157
Jefferson	73	78	66	75	68
Lafayette	4	3	4	4	11
Lake	136	137	118	122	113
Lee	236	238	241	226	234
Leon	4,291	3,995	3,921	3,848	3,660
Levy	19	14	21	21	20
Liberty	22	21	21	23	21
Madison	50	52	65	59	49
Manatee	170	177	179	173	175
Marion	129	135	136	139	155
Martin	64	62	69	88	118
Monroe	61	55	54	60	74
Nassau	38	30	30	41	43
Okaloosa	349	366	363	364	375

GEOGRAPHICAL ORIGIN OF STUDENTS BY
FLORIDA COUNTY, FALL TERMS

	Fall Semester <u>1982</u>	Fall Semester <u>1983</u>	Fall Semester <u>1984</u>	Fall Semester <u>1985</u>	Fall Semester <u>1986</u>
Okeechobee	9	10	10	12	11
Orange	733	655	657	664	641
Osceola	46	38	41	52	48
Palm Beach	787	780	810	813	881
Pasco	98	108	97	83	86
Pinellas	983	924	891	896	948
Polk	358	328	319	275	284
Putnam	55	43	30	31	27
St. Johns	68	48	69	68	82
St. Lucie	99	92	81	81	81
Santa Rosa	129	126	111	118	147
Sarasota	349	328	300	271	326
Seminole	320	288	293	324	363
Sumter	15	13	12	13	12
Suwannee	57	41	45	44	41
Taylor	76	94	69	74	80
Union	9	8	9	3	2
Volusia	379	337	317	344	345
Wakulla	71	73	76	80	62
Walton	32	34	38	37	40
Washington	<u>31</u>	<u>31</u>	<u>34</u>	<u>39</u>	<u>54</u>
Counties Total	18,278	17,214	17,104	17,114	17,868
Non-Florida	<u>3,742</u>	<u>3,851</u>	<u>4,216</u>	<u>4,644</u>	<u>5,270</u>
Total	22,020	21,065	21,320	21,758	23,138

Source: Fall (Preliminary) Student Data Course Files

FLORIDA COUNTIES: HISTORICAL NOTES

There are presently 67 counties in Florida. The first two were created in 1821, when Military Governor Andrew Jackson divided east and west Florida into Escambia and St. Johns counties.

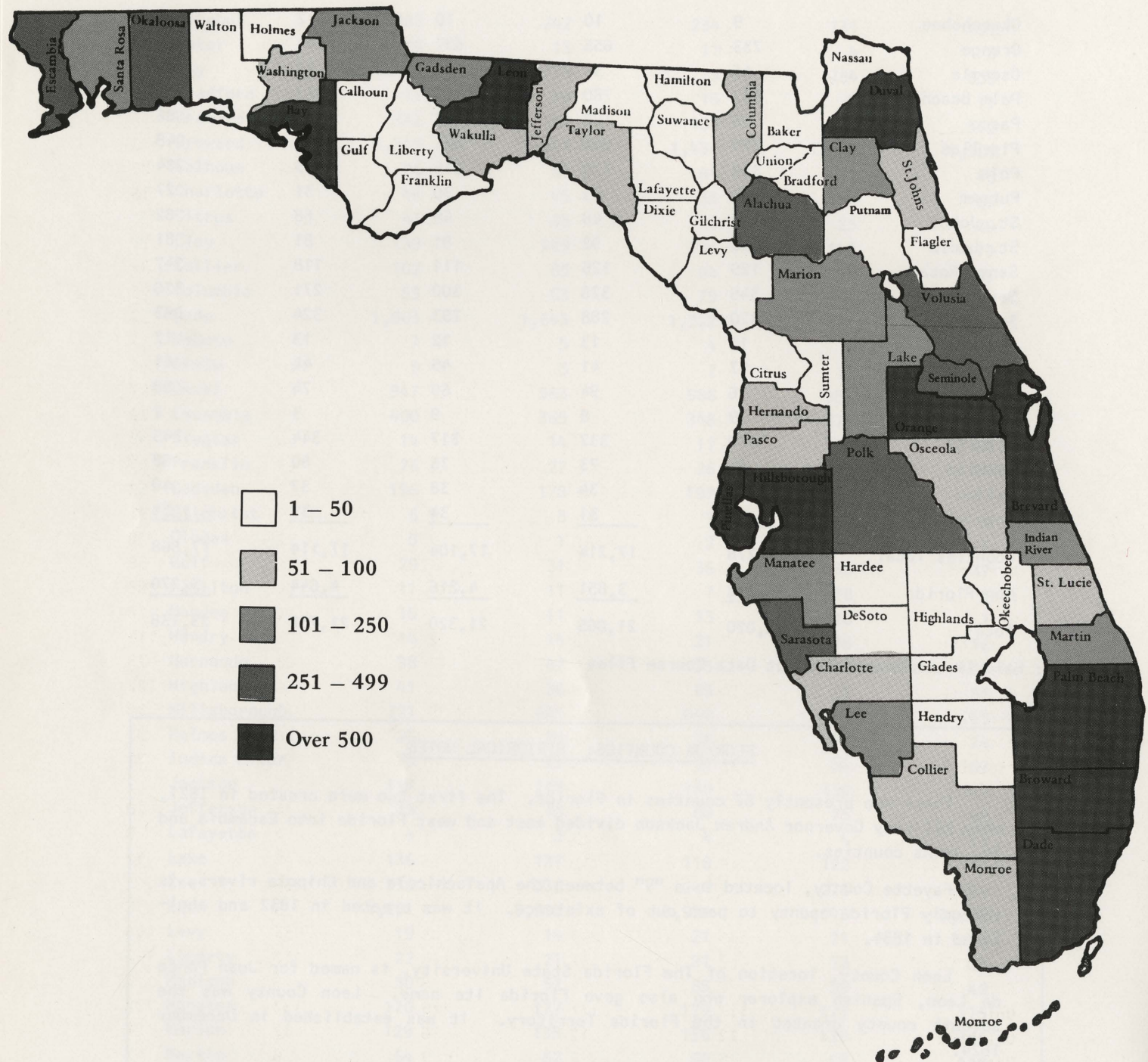
Fayette County, located in a "V" between the Apalachicola and Chipola rivers, is the only Florida county to pass out of existence. It was created in 1832 and abolished in 1834.

Leon County, location of The Florida State University, is named for Juan Ponce de Leon, Spanish explorer who also gave Florida its name. Leon County was the seventh county created in the Florida Territory. It was established in December 1824.

Mosquito County, established in December 1824, disappeared from the roster of counties when it was renamed Orange County in January 1845.

Spanish explorer Hernando De Soto is honored by having two counties named after him-- Hernando and DeSoto counties.

STUDENT HEADCOUNT ENROLLMENT BY FLORIDA
COUNTY OF ORIGIN, FALL 1986



GEOGRAPHICAL ORIGIN OF STUDENTS BY STATE
FALL TERMS

	Fall Semester <u>1982</u>	Fall Semester <u>1983</u>	Fall Semester <u>1984</u>	Fall Semester <u>1985</u>	Fall Semester <u>1986</u>
Alabama	191	181	171	181	183
Alaska	10	7	8	16	20
Arizona	3	4	14	16	16
Arkansas	11	15	16	20	26
California	52	58	55	67	91
Colorado	16	19	20	23	31
Connecticut	59	46	67	85	95
Delaware	12	13	12	10	7
District of Columbia	8	12	11	17	21
Florida	18,278	17,214	17,104	17,114	17,868
Georgia	622	628	655	701	747
Hawaii	2	4	4	9	10
Idaho	6	5	4	6	13
Illinois	97	120	145	169	184
Indiana	41	41	44	53	52
Iowa	15	14	15	19	31
Kansas	14	18	14	22	20
Kentucky	37	44	47	66	58
Louisiana	55	64	73	84	106
Maine	14	13	14	14	18
Maryland	77	79	98	103	114
Massachusetts	65	54	69	62	73
Michigan	74	79	97	86	122
Minnesota	20	16	21	22	30
Mississippi	31	47	49	60	83
Missouri	33	36	48	59	71
Montana	5	6	5	4	3
Nebraska	10	7	11	14	18
Nevada	3	3	1	2	0
New Hampshire	19	12	15	16	22
New Jersey	134	154	195	236	262
New Mexico	5	3	6	5	8
New York	245	243	303	353	406
North Carolina	147	131	124	117	117
North Dakota	7	5	6	7	5
Ohio	117	117	126	132	132
Oklahoma	12	12	16	17	21
Oregon	5	8	9	6	7
Pennsylvania	133	118	148	153	177
Rhode Island	10	8	15	20	18
South Carolina	71	65	83	99	117
South Dakota	4	2	5	7	5
Tennessee	92	91	95	106	124

GEOGRAPHICAL ORIGIN OF FLORIDA STATE UNIVERSITY STUDENTS BY STATE
FALL TERMS

	Fall Semester <u>1982</u>	Fall Semester <u>1983</u>	Fall Semester <u>1984</u>	Fall Semester <u>1985</u>	Fall Semester <u>1986</u>
Texas	51	51	57	67	84
Utah	6	7	5	10	9
Vermont	3	7	8	8	12
Virginia	177	195	204	221	268
Washington	19	19	21	17	21
West Virginia	17	17	15	20	26
Wisconsin	35	34	34	47	49
Wyoming	<u>1</u>	<u>2</u>	<u>4</u>	<u>5</u>	<u>6</u>
States Total	21,171	20,148	20,386	20,773	22,007
Non-U.S.A.	<u>849</u>	<u>917</u>	<u>934</u>	<u>985</u>	<u>1,131</u>
Total	22,020	21,065	21,320	21,758	23,138

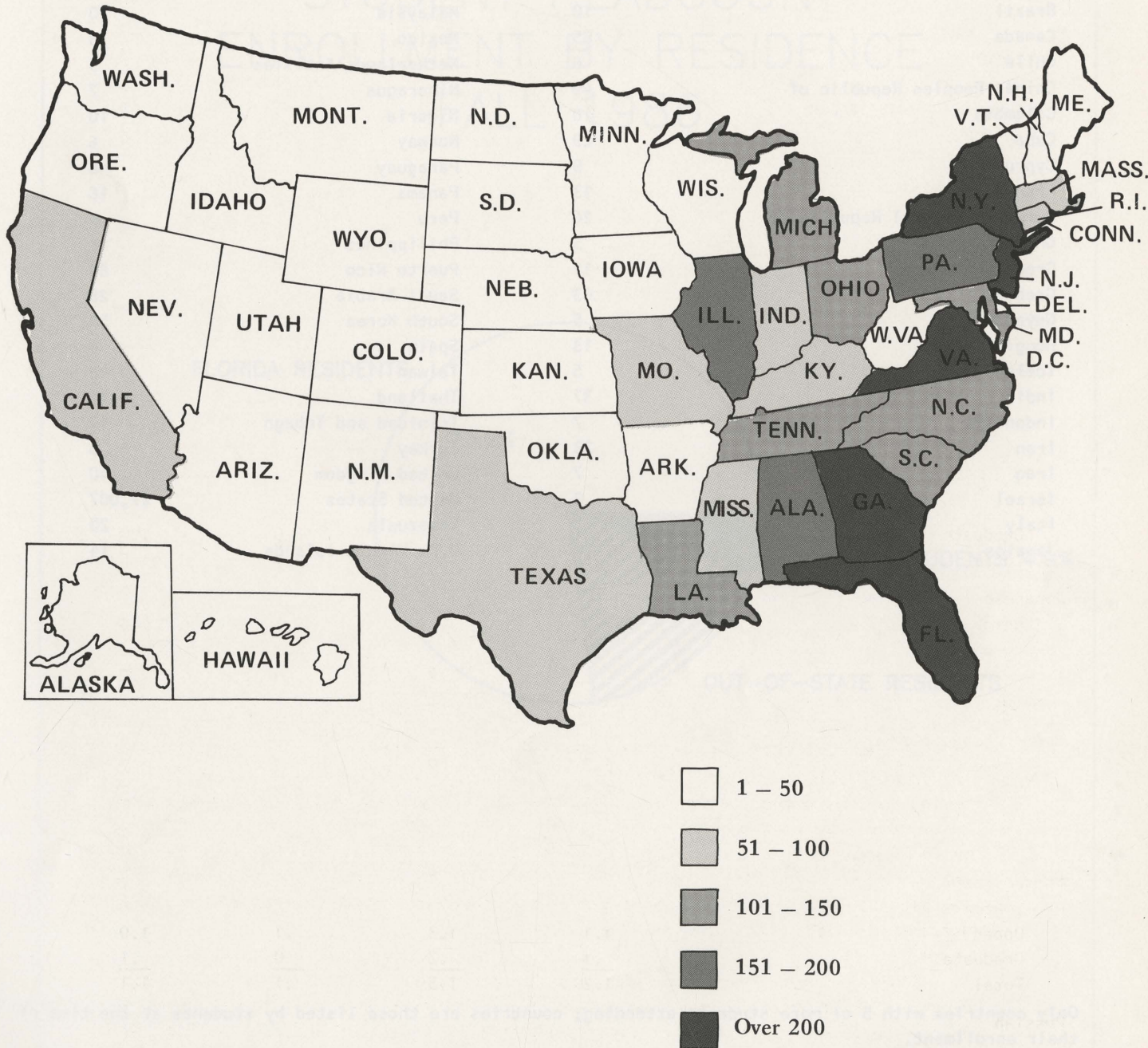
Source: Fall (Preliminary) Student Data Course File



The current seal of the state was first designated by the 1868 Legislature. The specifications included "That a Seal of the size of the American silver dollar, having in the center thereof a view of the sun's rays over a highland in the distance, a cocoa tree, a steamboat on water, and an Indian female scattering flowers in the foreground, encircled by the words 'Great Seal of the State of Florida: In God we trust...'. Only one official change has been made since 1868, the 1970 legislature changing the cocoa tree to the Sabal palmetto palm which had been designated as the State Tree in 1953.

Stylistic changes were made through the years, one example being the replacement of the steamboat by more modern vessels. The mountains in the background of the original seal were removed since mountains do not exist anywhere in Florida. The clothing worn by the Indian maiden has also changed to be more historically authentic, for instance, removing the feather headdress shown initially since only Indian males wore headdresses.

STUDENT HEADCOUNT ENROLLMENT BY
STATE OF ORIGIN, FALL 1986



GEOGRAPHICAL ORIGIN OF STUDENTS
FALL, 1986

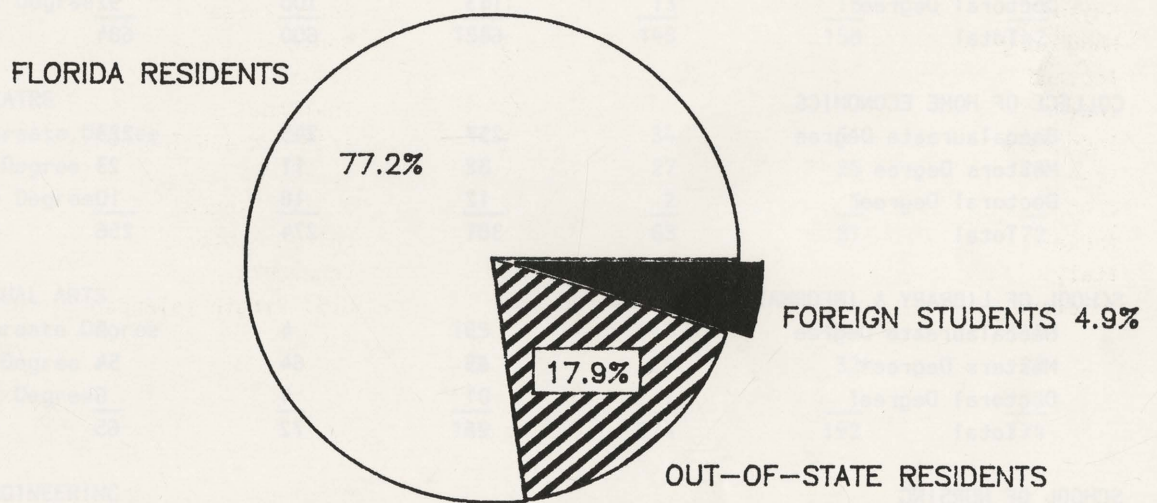
<u>COUNTRY/TERRITORY</u>	<u># STUDENTS</u>	<u>COUNTRY/TERRITORY</u>	<u># STUDENTS</u>
Australia	5	Japan	15
Bermuda	12	Jordan	15
Bahamas	9	Lebanon	12
Brazil	10	Malaysia	20
Canada	85	Mexico	8
Chile	6	Netherlands Antilles	5
China, Peoples Republic of	49	Nicaragua	7
Colombia	18	Nigeria	10
Cuba	29	Norway	6
Cyprus	9	Paraguay	6
France	13	Panama	16
Germany, Federal Republic of	26	Peru	9
Ghana	5	Philippines	11
Greece	12	Puerto Rico	89
Grenada	63	Saudi Arabia	28
Guyana	5	South Korea	59
Hong Kong	13	Spain	8
Iceland	5	Taiwan	48
India	37	Thailand	15
Indonesia	7	Trinidad and Tobago	17
Iran	23	Turkey	5
Iraq	7	United Kingdom	40
Israel	9	United States	22,007
Italy	5	Venezuela	20
Jamaica	36	U.S. Virgin Islands	14

Only countries with 5 or more students attending; countries are those listed by students at the time of their enrollment.

Note: A total of 1131 students from 112 foreign countries was enrolled in Fall 1986

Source: Fall (Preliminary) Student Data Course File

STUDENT HEADCOUNT ENROLLMENT BY RESIDENCE FALL 1986



SOURCE: Fall (Prelim) Student Data Course File

DEGREES AWARDED BY SCHOOLS AND COLLEGES
CUMULATIVE FOR ACADEMIC YEAR

	<u>1982-83</u>	<u>1983-84</u>	<u>1984-85</u>	<u>1985-86</u>
COLLEGE OF ARTS & SCIENCES				
Baccalaureate Degree	611	662	679	656
Masters Degree	119	116	158	112
Doctoral Degree	<u>104</u>	<u>86</u>	<u>85</u>	<u>73</u>
Total	834	864	922	841
COLLEGE OF BUSINESS				
Baccalaureate Degree	1058	1135	1029	983
Masters Degree	83	67	70	85
Doctoral Degree	<u>8</u>	<u>8</u>	<u>7</u>	<u>5</u>
Total	1149	1210	1106	1073
COLLEGE OF EDUCATION				
Baccalaureate Degree	329	312	370	362
Masters Degree*	200	188	222	273
Doctoral Degree	<u>113</u>	<u>100</u>	<u>92</u>	<u>84</u>
Total	642	600	684	719
COLLEGE OF HOME ECONOMICS				
Baccalaureate Degree	257	245	223	249
Masters Degree	32	11	23	16
Doctoral Degree	<u>12</u>	<u>18</u>	<u>10</u>	<u>12</u>
Total	301	274	256	277
SCHOOL OF LIBRARY & INFORMATION STUDIES				
Baccalaureate Degree	9	4	5	2
Masters Degree*	65	64	54	66
Doctoral Degree	<u>1</u>	<u>4</u>	<u>6</u>	<u>2</u>
Total	75	72	65	70
SCHOOL OF NURSING				
Baccalaureate Degree	126	109	134	136
SCHOOL OF CRIMINOLOGY				
Baccalaureate Degree	221	215	223	218
Masters Degree	19	11	12	9
Doctoral Degree	<u>12</u>	<u>7</u>	<u>4</u>	<u>1</u>
Total	252	233	239	228
COLLEGE OF LAW				
Juris Doctor Degree	203	196	189	210
COLLEGE OF SOCIAL SCIENCES				
Baccalaureate Degree	317	345	399	438
Masters Degree	99	99	99	64
Doctoral Degree	<u>27</u>	<u>19</u>	<u>20</u>	<u>17</u>
Total	443	463	518	519

*Advanced Masters and Specialist Degrees are included with Masters Degrees

DEGREES AWARDED BY SCHOOLS AND COLLEGES
CUMULATIVE FOR ACADEMIC YEAR

	<u>1982-83</u>	<u>1983-84</u>	<u>1984-85</u>	<u>1985-86</u>
SCHOOL OF SOCIAL WORK				
Baccalaureate Degree	68	62	54	58
Masters Degree	144	95	75	159
Doctoral Degree	<u>4</u>	<u>1</u>	<u>3</u>	<u>4</u>
Total	216	158	132	221
COLLEGE OF COMMUNICATION				
Baccalaureate Degree	275	277	233	209
Masters Degree	52	58	44	40
Doctoral Degree	<u>3</u>	<u>14</u>	<u>6</u>	<u>4</u>
Total	330	349	283	253
SCHOOL OF MUSIC				
Baccalaureate Degree	74	80	77	74
Masters Degree	73	52	63	53
Doctoral Degree	<u>8</u>	<u>13</u>	<u>18</u>	<u>15</u>
Total	155	145	158	142
SCHOOL OF THEATRE				
Baccalaureate Degree	41	34	51	45
Masters Degree	33	27	25	23
Doctoral Degree	<u>1</u>	<u>2</u>	<u>5</u>	<u>4</u>
Total	75	63	81	72
SCHOOL OF VISUAL ARTS				
Baccalaureate Degree	125	145	159	149
Masters Degree	24	28	32	22
Doctoral Degree	<u>0</u>	<u>1</u>	<u>1</u>	<u>3</u>
Total	149	174	192	174
COLLEGE OF ENGINEERING				
Baccalaureate Degree			9	30
Masters Degree			0	0
Doctoral Degree			<u>0</u>	<u>0</u>
Total	0	0	9	30
UNIVERSITY DEGREE TOTALS				
Baccalaureate	3511	3625	3645	3609
Masters*	943	816	877	922
Juris Doctor	203	196	189	210
Doctoral	<u>293</u>	<u>273</u>	<u>257</u>	<u>224</u>
TOTAL	4950	4910	4968	4965

Note: A total of 450 Associate of Arts degrees was also awarded in 1985-86.

*Advanced Masters and Specialist Degrees are included with Masters Degrees

Source: Final Student Data Course File

FLORIDA COMMUNITY/JUNIOR COLLEGE STUDENTS
TRANSFERRING TO FLORIDA STATE UNIVERSITY
FALL TERMS

	Fall Quarter <u>1982</u>	Fall Semester <u>1983</u>	Fall Semester <u>1984</u>	Fall Semester <u>1985</u>	Fall Semester <u>1986</u>
Brevard Community College	50	40	42	51	45
Broward Community College	91	133	153	96	102
Central Florida Community College	18	22	23	17	16
Chipola Junior College	56	53	35	52	41
Daytona Beach Junior College	39	25	29	39	27
Edison Junior College	49	35	54	17	47
Florida Jr. College at Jacksonville	71	71	93	72	70
Florida Keys Community College	8	2	4	4	7
Gulf Coast Community College	96	123	91	109	102
Hillsborough Community College	27	14	26	17	33
Indian River Community College	27	37	14	22	32
Lake City Community College	23	14	20	13	10
Lake Sumter Community College	19	12	11	11	7
Manatee Junior College	53	52	53	38	48
Miami-Dade Community College	151	140	97	95	100
North Florida Junior College	29	40	29	25	19
Okaloosa-Walton Junior College	39	39	48	35	42
Palm Beach Junior College	68	83	86	57	76
Pasco-Hernando Community College	7	14	14	4	7
Pensacola Junior College	69	52	52	64	62
Polk County Community College	26	31	18	27	14
Santa Fe Junior College	26	23	24	24	21
Seminole Junior College	29	22	16	27	14
South Florida Junior College	5	6	3	2	2
St. Johns Junior College	17	19	6	7	4
St. Petersburg Junior College	113	91	87	82	99
Tallahassee Community College	264	270	263	217	186
Valencia Community College	<u>45</u>	<u>54</u>	<u>43</u>	<u>44</u>	<u>32</u>
TOTAL	1,515	1,517	1,434	1,268	1,265

Source: New Transfer Student Report, 1980-1984
Fall (Preliminary) Student Data Course File, 1985-86

STATE FUNDABLE STUDENT CREDIT HOURS
FALL 1986

	<u>Lower</u>	<u>Upper</u>	<u>Grad</u>	<u>Thesis</u>	<u>Diss</u>	<u>Total</u>
COLLEGE OF ARTS AND SCIENCES						
Anthropology	1056	804	111	3	0	1974
Biological Science	6858	2204	549	75	243	9929
Chemistry	3164	1252	858	20	138	5432
Classical Languages, Literature, and Civilization:						
Classics	603	1377	58	10	0	2048
Greek	44	3	9	0	0	56
Hebrew	20	0	0	0	0	20
Latin	232	33	12	0	0	277
Classical Languages, Literature, and Civilization Totals	899	1413	79	10	0	2401
English	11489	2924	839	26	41	15319
Geology	2968	174	256	25	1	3424
History	11973	2083	619	6	9	14690
Humanities	3021	317	279	0	25	3642
Mathematics	14246	3404	645	6	35	18336
Computer Science	1200	1893	486	72	21	3672
Meteorology	1408	341	348	54	45	2196
Modern Languages:						
Chinese	76	0	6	0	0	82
French	1991	276	154	0	5	2426
German	840	217	82	6	0	1145
Italian	560	150	15	0	0	725
Japanese	132	6	18	0	0	156
Modern Languages	30	60	39	0	0	129
Portuguese	0	6	0	0	0	6
Russian	260	57	9	0	0	326
Slavic	0	18	0	0	0	18
Spanish	2736	459	159	3	1	3358
Modern Language Totals	6625	1249	482	9	6	8371
Oceanography	579	9	282	33	66	969
Philosophy	1938	391	207	0	15	2551
Physics	2752	822	362	0	83	4019
Psychology	4737	4630	1224	60	92	10743
Religion	3804	520	147	3	0	4474
Statistics	144	2117	443	0	0	2704
Geophysical Fluid Dynamics	0	0	18	0	6	24
Molecular Biophysics	0	0	18	0	65	83
American Studies	222	198	0	0	0	420
Asian Studies	0	0	5	0	0	5
College of Arts and Sciences Totals	79083	26745	8257	402	891	115378

STATE FUNDABLE STUDENT CREDIT HOURS
FALL 1986

	<u>Lower</u>	<u>Upper</u>	<u>Grad</u>	<u>Thesis</u>	<u>Diss</u>	<u>Total</u>
COLLEGE OF BUSINESS						
Accounting	3399	3892	0	0	0	7291
Business Administration	0	0	2127	0	70	2197
Finance	0	6837	0	0	0	6837
Hospitality Administration	0	1850	0	0	0	1850
Risk and Insurance	0	3516	42	0	0	3558
Information & Management Science	0	2442	0	0	0	2442
Management	0	3767	0	0	0	3767
Marketing	0	3962	0	0	0	3962
Multi-National Business Operations	0	498	0	0	0	498
Business Law	0	2417	0	0	0	2417
College of Business Totals	3399	29181	2169	0	70	34819
COLLEGE OF EDUCATION						
Childhood Education	0	4158	471	0	6	4635
Curriculum and Instruction	0	1737	350	3	71	2161
Educational Research, Development, and Foundations	0	1565	1846	0	114	3525
Movement Science and Physical Education	322	1835	591	15	32	2795
Human Services and Studies	0	2394	1125	8	57	3584
Educational Leadership	0	222	1256	0	260	1738
Special Education and Reading	21	1162	772	0	24	1979
College of Education Totals	343	13073	6411	26	564	20417
COLLEGE OF HOME ECONOMICS						
Clothing, Textiles and Merchandising	600	2847	2	2	17	3468
Nutrition & Food Science	2094	396	131	24	9	2654
Home and Family Life	2169	1181	482	2	38	3872
Home Economics Education	0	435	108	7	0	550
College of Home Economics Totals	4863	4859	723	35	64	10544
SCHOOL OF LIBRARY & INFORMATION STUDIES	0	62	1214	0	28	1304
SCHOOL OF NURSING	0	3301	151	13	0	3465
SCHOOL OF CRIMINOLOGY	249	4537	498	0	22	5306
COLLEGE OF LAW	0	0	7264	0	0	7264
COLLEGE OF SOCIAL SCIENCES						
Political Science	822	4481	483	0	40	5826
Economics	5754	3169	623	12	18	9576

STATE FUNDABLE STUDENT CREDIT HOURS
FALL 1986

	<u>Lower</u>	<u>Upper</u>	<u>Grad</u>	<u>Thesis</u>	<u>Diss</u>	<u>Total</u>
Geography	2061	772	136	6	0	2975
International Affairs	0	6	79	5	0	90
Social Sciences	0	76	0	0	0	76
Demography	0	0	21	0	0	21
Sociology	3039	771	418	18	63	4309
Urban and Regional Planning	0	237	703	6	1	947
Public Administration	0	636	981	0	15	1632
Black Studies	0	21	0	0	0	21
College of Social Sciences Totals	11676	10169	3444	47	137	25473
SCHOOL OF SOCIAL WORK	44	1406	3171	0	14	4635
COLLEGE OF COMMUNICATION						
Communication	411	6206	445	18	0	7080
Communication Disorders	0	1169	581	6	24	1780
College of Communication Totals	411	7375	1026	24	24	8860
SCHOOL OF MUSIC	3667	2219	2502	35	28	8451
SCHOOL OF THEATRE	477	6343	456	0	1	7277
SCHOOL OF VISUAL ARTS						
Art	897	1828	370	22	0	3117
Art Education	0	327	127	0	11	465
Art History	0	1056	147	9	0	1212
Dance	478	199	211	0	0	888
Interior Design	0	1973	191	0	0	2164
School of Visual Arts Totals	1375	5383	1046	31	11	7846
SLAVIC & EAST EUROPEAN STUDIES	0	0	0	0	0	0
COLLEGE OF ENGINEERING						
Electrical Eng./Systems	236	1014	0	0	0	1250
Mechanical Engineering	39	409	0	0	0	448
Civil Engineering	269	229	0	0	0	498
Chemical Engineering	0	0	0	0	0	0
Engineering NFA	0	0	0	0	0	0
Engineering Totals	544	2123	0	0	0	2667
UNIVERSITY TOTALS	106131	116776	38332	613	1854	263706

Source: Fall (Preliminary) Student Data Course File

ENROLLMENT HISTORY
HEADCOUNT BY LEVEL
(Fall Terms Since 1936)

<u>Year</u>	<u>Undergraduate</u>	<u>Graduate</u>	<u>Other</u>	<u>Total</u>
1936	1762	13	44	1819
1938	1739	27	51	1817
1940	1908	19	42	1969
1942	1786	13	47	1846
1944	2177	20	68	2265
1946	2528	19	36	2583
1948	4738	305	100	5143
1950	4537	779	165	5481
1952	3825	874	150	4849
1954	4578	819	253	5650
1956	5838	861	283	6982
1958	6195	1080	240	7515
1960	7365	1335	319	9019
1962	8466	1577	348	10391
1964	9760	2008	367	12135
1966	11395	2558	366	14319
1968	12443	3611	249	16303
1970	12863	3813	316	16992
1971	13729	3905	733	18367
1972	14367	4009	784	19160
1973	14935	3940	1515	20390
1974	15314	4123	1600	21037
1975	15685	4171	1808	21664
1976	15859	4101	1644	21604
1977	15350	4137	1412	20899
1978	15182	4241	1628	21051
1979	15593	4151	1717	21461
1980	16653	4314	1457	22424
1981	16972	4286	1105	22363
1982	16554	4222	1244	22020
1983	15871	4071	1123	21065
1984	16035	4105	1180	21320
1985	16151	4191	1416	21758
1986	17071	4319	1748	23138

Source: Fall (Preliminary) Student Data Course File

TOTAL STUDENT CREDIT HOURS BY COURSE LEVEL AND CLASS LEVEL
FALL 1986

<u>Class of Student</u>	<u>N</u>	<u>LEVEL OF COURSE</u>							<u>Thesis/</u>	
		<u>0000</u>	<u>1000</u>	<u>2000</u>	<u>3000</u>	<u>4000</u>	<u>5000</u>	<u>6000</u>	<u>Diss</u>	<u>Total</u>
High School	20		30	39	4	3				76
Post H S Special	419	2	472	454	1,146	1,127	56			3,257
Transient	133	2	78	101	299	168	30	1		679
Freshman	5,113	26	43,026	17,238	6,323	586	14			67,213
Sophomore	2,628	2	11,297	12,203	10,034	1,473				35,009
Junior	4,732		7,612	8,454	33,846	10,728	9			60,649
Senior	4,598		3,070	3,655	21,901	26,304	539	3		55,472
Post Bacc Special	1,102		182	215	607	1,055	2,894	268		5,221
Temporary Grad	74			4	21	24	734	11	5	799
Beginning Grad	2,292		137	118	496	1,470	17,715	1,184	710	21,830
Law	527						2,977	4,199		7,176
Advanced Grad	<u>1,500</u>	<u>—</u>	<u>83</u>	<u>31</u>	<u>112</u>	<u>186</u>	<u>6,091</u>	<u>2,401</u>	<u>2,653</u>	<u>11,557</u>
Total	23,138	32	65,987	42,512	74,789	43,124	31,059	8,067	3,368	268,938

All fee waivers included

Source: Fall (Preliminary) Student Course File

The FSU Flying High Circus

The FSU Flying High Circus is the only collegiate circus in the world. It is primarily an aerial and stage presentation consisting of 80-100 students flying, balancing, juggling, swinging, skating and clowning under a large canvas tent. Students do their own rigging, put up the big top, change the equipment for each act, spread the sawdust, and string lights, all for only one physical education credit hour, or, as volunteer worker/performers. The circus has toured Canada, the Dominican Republic, and the West Indies, and appeared on "CBS Sports Spectacular", "ABC's Wide World of Sports", and "PM Magazine." The circus is administered through the Office of the Vice President for Student Affairs.



FACULTY & STAFF



FACULTY CHARACTERISTICS

FALL, 1986

- ° Of state-funded filled FTE faculty positions, 47 percent hold the rank of Professor, 31 percent are Associate Professors, 18 percent are Assistant Professors, and 2 percent are Instructors
- ° Six faculty members have been elected members of the National Academy of Sciences. The four currently on the faculty are:

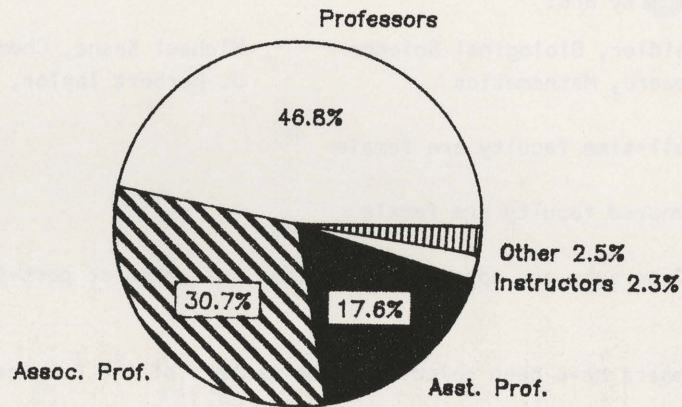
Lloyd M. Beidler, Biological Science	Michael Kasha, Chemistry
Louis N. Howard, Mathematics	J. Herbert Taylor, Biological Science
- ° 22 percent of full-time faculty are female
- ° 18 percent of tenured faculty are female
- ° A total of 1,397 persons are appointed to either full-time or part-time positions on a faculty classification
- ° Four faculty members have been selected to be members of the American Academy of Arts and Sciences. They are:

Lloyd M. Beidler, Biological Science	Louis N. Howard, Mathematics
Jaakko Hintikka, Philosophy	Michael Kasha, Chemistry
- ° 85 percent of full-time instructional faculty hold a doctorate degree
- ° The average age for full-time instructional faculty is 47; the eldest of these is 75, the youngest is 26

Source: Faculty Salaries Report 1986-87

STATE-FUNDED FILLED FTE FACULTY POSITIONS

FACULTY BY RANK
STATE-FUNDED FILLED FTE POSITIONS
1986-1987



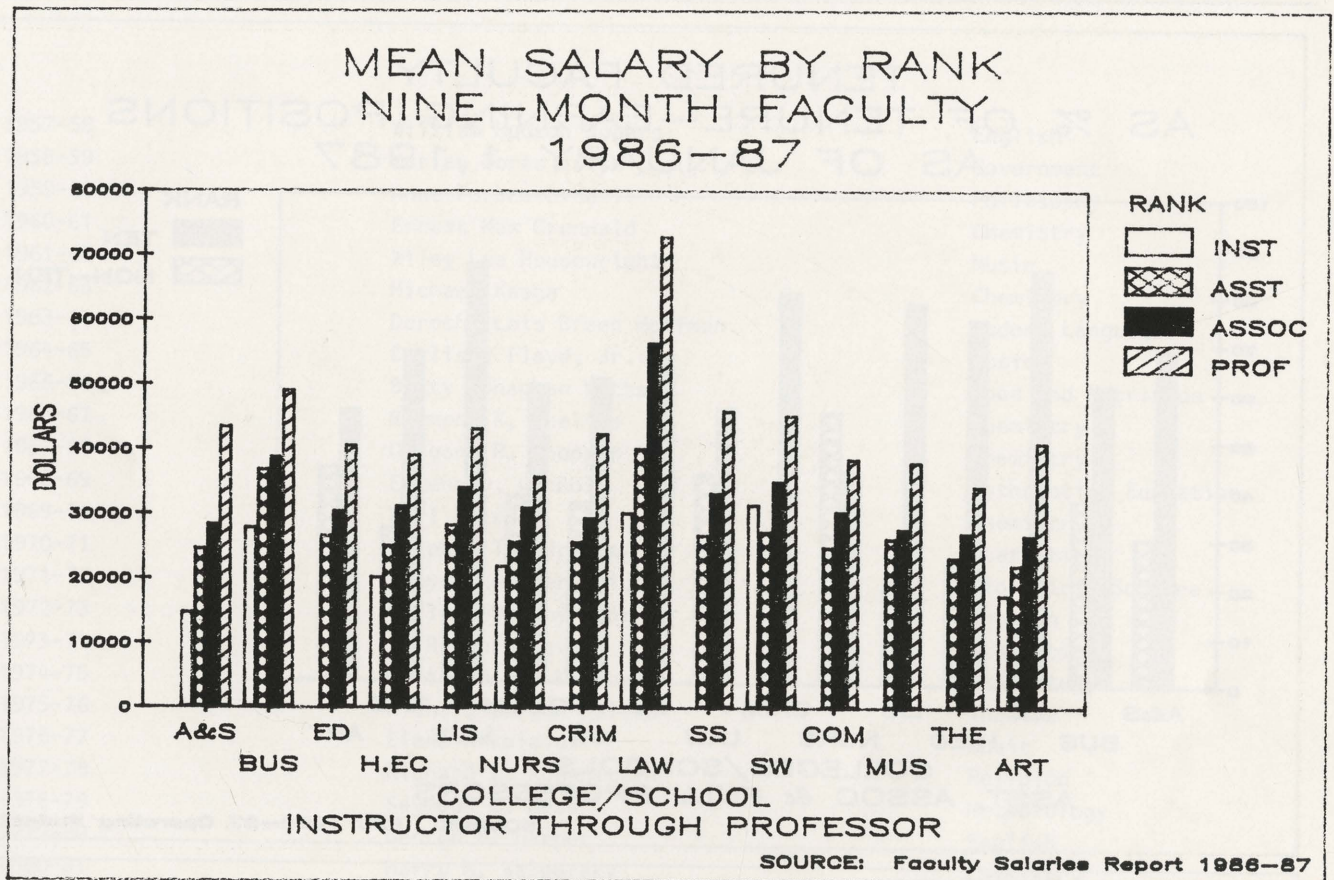
TOTAL = 1056.97

SOURCE: Faculty Salaries Report 1986-87

State-Funded Filled FTE Faculty Positions by College/School by Rank

College	Prof.	Assoc.	Asst.	Inst.	Other	Total
Arts & Sciences	226.50	90.50	58.00	11.00	12.00	393.00
Business	34.50	36.00	28.00	2.00	3.67	104.17
Education	64.50	49.50	11.95	.50	0	126.45
Home Economics	9.00	16.50	7.00	1.00	0	33.50
Library	9.00	4.00	1.00	-	0	14.00
Nursing	3.00	9.00	10.00	1.00	2.00	25.00
Criminology	7.50	7.00	1.00	-	-	15.50
Law	17.00	10.00	5.00	8.00	3.00	43.00
Social Sciences	54.00	23.00	23.00	-	-	100.00
Social Work	6.50	10.00	7.99	.31	1.55	26.35
Communication	8.00	13.50	7.50	-	1.00	30.00
Music	37.50	24.50	5.00	-	2.00	69.00
Theatre	7.00	11.00	3.00	-	1.00	22.00
Visual Arts	11.00	20.50	17.50	1.00	-	50.00
	495.00	325.00	185.94	24.81	26.22	1056.97

MEAN SALARY BY RANK FOR NINE-MONTH FACULTY 1986-1987

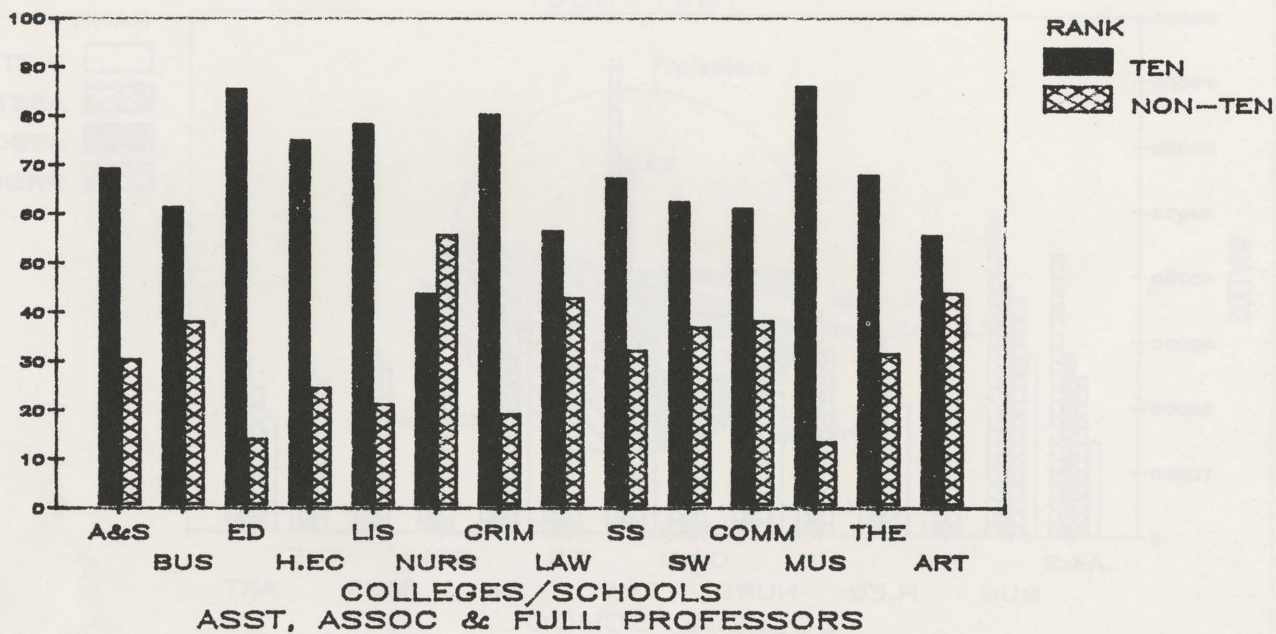


MEAN SALARY BY RANK FOR NINE-MONTH FACULTY 1986-87

<u>College/School</u>	<u>Prof.</u>	<u>Assoc.</u>	<u>Asst.</u>	<u>Inst.</u>	<u>Other</u>	<u>Total</u>
Arts & Sciences	\$43,981	\$28,919	\$25,167	\$15,315	\$20,394	\$36,716
Business	49,570	39,316	37,407	28,439	18,003	41,852
Education	41,103	30,942	27,161			35,744
Home Economics	39,600	31,741	25,639	20,744		32,023
Library & Info. St.	43,707	34,616	28,878			39,769
Nursing	36,233	31,510	26,265	22,505	20,280	28,067
Criminology	42,882	29,897	26,221			35,465
Law	73,386	56,914	40,617	30,680		57,927
Social Sciences	46,445	33,731	27,258			39,002
Social Work	45,753	35,552	27,805	32,000	23,148	34,522
Communication	38,993	30,874	25,408		20,000	31,051
Music	38,497	28,166	26,755		22,411	33,201
Theatre	34,728	27,565	23,809			28,588
Visual Arts	41,482	27,217	22,639	17,948		28,719
Total	\$44,026	\$33,354	\$27,931	\$23,947	\$20,706	\$35,903

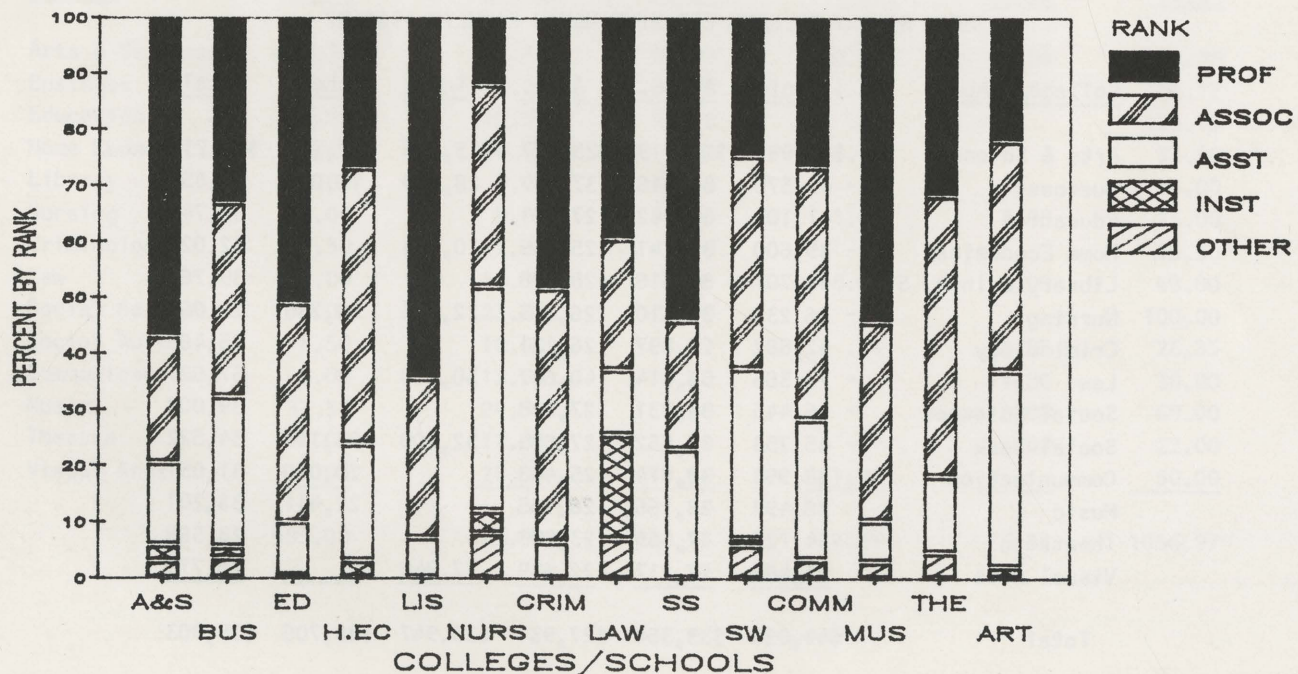
FACULTY DISTRIBUTIONS, 1986-87
TENURED AND BY RANK

TENURED FACULTY
AS % OF TENURE-EARNING POSITIONS
AS OF JANUARY 1, 1987



SOURCE: FSU 1986-87 Operating Budget

FACULTY BY RANK
1986-87



SOURCE: Faculties Salaries Report 1986-87

THE ROBERT O. LAWTON DISTINGUISHED PROFESSORS

1957-58	William Hudson Rogers	English
1958-59	Marian Doris Irish	Government
1959-60	Anna Forbes Liddell	Philosophy
1960-61	Ernest Max Grunwald	Chemistry
1961-62	Wiley Lee Housewright	Music
1962-63	Michael Kasha	Chemistry
1963-64	Dorothy Lois Breen Hoffman	Modern Languages
1964-65	Carlisle Floyd, Jr.	Music
1965-66	Betty Monaghan Watts	Food and Nutrition
1966-67	Raymond K. Sheline	Chemistry
1967-68	Gregory R. Choppin	Chemistry
1968-69	Eugene D. Nichols	Mathematics Education
1969-70	Earl Frieden	Chemistry
1970-71	Ralph Allan Bradley	Statistics
1971-72	Lloyd Mumbauer Beidler	Biological Science
1972-73	Kellogg Wesley Hunt	English
1973-74	I. Richard Savage	Statistics
1974-75	Daniel Ralph Kenshalo	Psychology
1975-76	Richard Gordon Fallon	Theatre
1976-77	Elena Nikolaidi	Music
1977-78	Richard L. Rubenstein	Religion
1978-79	Seymour L. Hess	Meteorology
1979-80	George M. Harper	English
1980-81	Harry M. Walborsky	Chemistry
1981-82	Robert Gilmer	Mathematics
1982-83	Robert M. Gagne	Educational Research, Development, and Foundations
1983-84	J. Herbert Taylor	Biological Science
1984-85	Leo Mandelkern	Chemistry
	Frank Proschan	Statistics
1985-86	T.N. Krishnamurti	Meteorology
1986-87	Daniel Simberloff	Biological Science

Note: This award was known as the Distinguished Professor award until spring of 1981 when it was renamed in honor of the late Vice President for Academic Affairs Robert O. Lawton. At that time past recipients were also designated Lawton Distinguished Professors. This award is the highest honor that the faculty can bestow on one of its members.

Source: Office of the President

PRESIDENT'S TEACHING AWARDS
for Excellence in Undergraduate Teaching

1977-78	James P. Jones, Jr. Clifford K. Madsen H. Peter Stowell	History Music English
1978-79	Sydney R. Grant Colleen J. Kirk James C. Moore	Educational Research, Development, and Foundations Music Audiology and Speech Pathology
1979-80	John R. Albright Patricia A. Dore Kurt G. Hofer	Physics Law Biological Sciences
1980-81	Joyce L. Carbonell Mildred W. Ravenell Patricia Rose	Psychology Law Art
1981-82	Robert C. Clark E. Joe Nosari Michael E. Rashotte	Childhood, Reading, and Special Education Business/Finance Psychology
1982-83	Janice L. Flake Sandra W. Rackley Calvin E. Zongker	Curriculum and Instruction Communication Home and Family Life
1983-84	Fanchon F. Funk John A. Payne William W. Rogers	Educational Leadership Audiology and Speech Pathology History
1984-85	Edward A. Desloge John J. Fenstermaker Warren B. Nation	Physics English Business/Marketing
1985-86	Hans P. Braendlin William J. Cloonan John A. Degen Nancy T. deGrummond Emily T. Haymes Janet E. Kodras Duane A. Meeter Robert A. Reiser Michael M. Richey Timothy C. Verdon Barbara W. White	Modern Languages Modern Languages Theatre Classics Movement Science and Physical Education Geography Statistics Educational Leadership Theatre Art History Social Work

These awards continue the precedent established by the Standard Oil/AMOCO Foundation awards which are no longer given.

Source: Office of the President

AMOCO/STANDARD OIL FOUNDATION AWARDS
for Excellence in Undergraduate Teaching

1967	Homer A. Black Donald D. Horward Dorothy M. Schlitt	Business (Accounting) History Science Education
1968	Richard M. Baker, Jr. Joann James Robert J. Kansky	Marketing Modern Languages Mathematics Education
1969	Harrison Chase William H. Heflin William H. Long	Geography Foreign Language Education Meteorology
1970	Azzurra B. Givens Edward K. Mellon Charles T. Wellborn	Modern Languages Chemistry Religion
1971	Ronald J. Clark Carolyn J. Schluck Jerome H. Stern	Chemistry Elementary Education English
1972	Joyotpaul Chaudhuri W. W. de Grummond Jeanne L. Ryan	Government Classics Habilitative Science
1973	John J. Carey Marilyn P. Gombosi Kay Judkins	Religion Home Economics Home Economics
1974	David L. Ammerman Janet G. Burroway James C. Smith	History English Psychology
1975	William T. Lhamon Hans S. Plendl Robert J. Rubanowice	English Physics History
1976	Eugene J. Crook Robert Carter Morris Marjorie F. Sparkman	English Physics Nursing
1977	Richard L. Chapple Leo Sandon, Jr. George E. Weaver	Modern Languages Religion Psychology

Source: Office of Information Services

DEVELOPING SCHOLAR AWARDS

1977-78

Robert L. Conn	Finance
James Capinski	Economics
Daniel S. Simberloff	Biological Science
Gunther Stamm	Art

1978-79

Jayne M. Alley	Music
Burton M. Atkins	Government
Virgil L. Goedken	Chemistry
James D. Orcutt	Sociology
Friedrich K. Stephan	Psychology
Susan B. Thomas	Child Development

1979-80

Karyl J. Louwenaar	Music
Randolph R. Rill	Chemistry
Leo Sandon	Religion
William R. Thompson	Government

1980-81

Scott C. Flanagan	Government
Marc E. Freeman	Biological Science
Dale A. Olsen	Music
Marie W. Osmond	Sociology
Joseph K. Torgesen	Psychology

1981-82

Robert W. Fichter	Art
William F. Marzluff	Chemistry
Glenn R. Parker	Government
William E. Pelham, Jr.	Psychology
H. Peter Stowell	English
Robert A. Reiser	Educational Research, Development, and Foundations

1982-83

Nancy T. de Grummond	Classics
Nancy R. Green	Nutrition and Food Science
Penelope E. Mason	Art History
Thomas S. McCaleb	Economics
Gerald W. McDonald	Sociology
Joseph F. Owens III	Physics

1983-84

Meinrat O. Andreae	Oceanography
Russell J. Dalton	Political Science
Larry W. Isaac	Sociology
Gerald P. Schatten	Biological Science
Harold E. Van Wart	Chemistry

1984-85

Ronald C. Braswell	Finance
Allan J. Clarke	Oceanography
Mark J. Martinko	Management
Samuel L. Tabor	Physics
Joseph Travis	Biological Science

1985-86

Gregory G. Dess	Management
W. Ross Ellington	Biological Science
Kathleen A. Kemp	Political Science
S. Douglass Seaton	Music
Timothy C. Verdon	Art History

1986-87

Pamela K. Coats	Finance
Dennis W. Duke	Physics
Melissa A. Hardy	Sociology
Christopher J. Lingle	Biological Science
Charles M. Tolbert	Sociology

Source: Office of the President

SPECIAL FACULTY AWARDS

DAISY PARKER FLORY ALUMNI PROFESSORS

Dr. Clifford K. Madsen
Dr. Fred L. Standley

Music
English

Note: This award is given to recognize and honor faculty who have contributed to the University through their exemplary and sustained service to students, faculty, discipline/profession, and community. It consists of an official title and includes an annual supplement of \$5,000 from the time of the award for a period of 10 years, or to the point at which the recipient leaves full-time employment at FSU. The award was established in 1985 to honor Dr. Daisy Parker Flory, Professor of Political Science, who was Dean of the Faculties from 1973 until her retirement in 1984. Dr. Flory joined the faculty of Florida State College for Women in 1942 and continued to teach throughout her demanding administrative career.

NAMED PROFESSORSHIP AWARDS

1986-87

Janet G. Burroway
Thomas R. Dye

English
Government;
Policy Science
Philosophy
Mathematics
Music

Jaako Hintikka
Louis N. Howard
William O. Winstead

Note: These awards, funded by the FSU Foundation, honor full-time, tenured, full professors who exemplify high standards of performance in teaching, research and service. Recipients receive an official title and an annual prize of \$5,000 while they remain full-time FSU employees.

THE COYLE E. MOORE, JR. AWARD

1962-63:
1963-64
1964-65:
1965-66:
1966-67:
1967-68:

James P. Jones
William Warren Rogers
Katherine Hoffman
Steve Edwards
Michael J. Shaara
Ingrid Tiesler

History
History
Chemistry
Physics
English
Modern Languages

THE GEORGE MILLER AWARD

1966-67:
1967-68:

Eva May Atwood
Robley J. Light

Modern Language
Chemistry

Source: Office of the President

Endowed chairs have been established for the purpose of attracting outstanding faculty to the Florida State University in order to provide excellence in teaching and research in a designated scholarly field. Eminent Scholar Chairs are established through contributions from the private sector and matching funds from the Florida Endowment Trust Fund. The Florida State University presently has the following Endowed Chairs, which become Eminent Scholar Chairs when fully funded.

Fully-funded Chairs

Burt Reynolds Eminent Scholar Chair in Regional and Professional Theatre
Maximilian E. and Marion O. Hoffman Eminent Scholar Chair in Theatre
Mildred and Claude Pepper Eminent Scholar Chair in Social Gerontology
The Wiley and Lucilla Housewright Eminent Scholar Chair in Music
The Thomas L. Williams, Jr. Eminent Scholar Chair in Information and Management Sciences
The Mack and Effie Campbell Tyner Eminent Scholar Chair in Home Economics
The Edward Ball Eminent Scholar Chair in International Law
The Tobias Simon Eminent Scholar Chair in Public Law

Chairs Encumbered

Bernard F. Sliger Eminent Scholar Chair in Economic Education
The Syde P. Deeb Eminent Scholar Chair in Political Science

Chairs Priority for Encumbrances

The Jerry Collins Eminent Scholar Chair in Public Administration

Chairs by Land or Will

Payne H. and Charlotte Hodges Midyette Eminent Scholar Chair in Insurance
Pat Winthrop-King Eminent Scholar Chair in French
Anonymous Eminent Scholar Chair in Biological Science

In Progress

Chair in Engineering and Science
Chair in Insurance and Risk Management
Chair in Law
Chair in Biology

Other Endowed Chairs

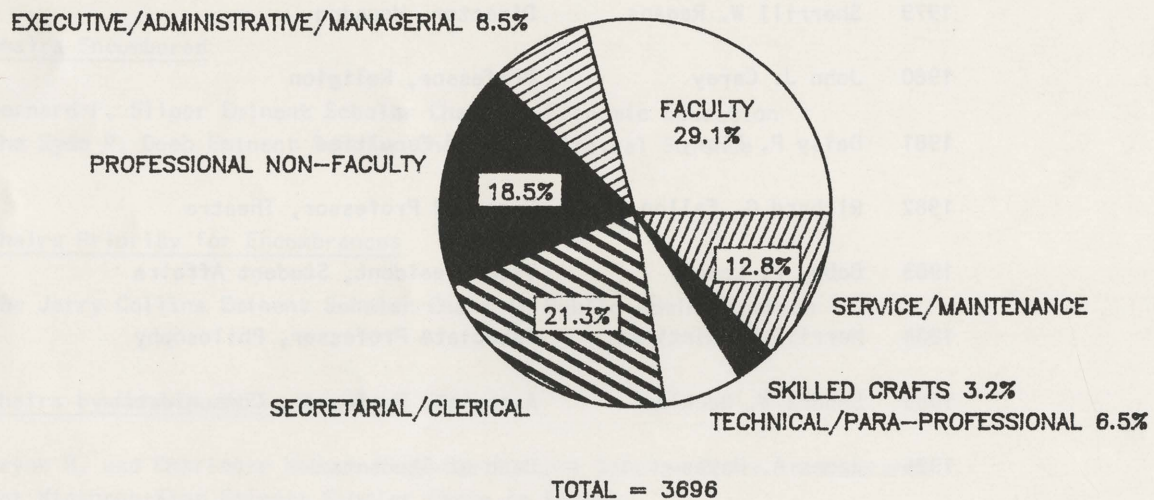
William O. Cullom Endowed Chair in Finance

1973	Stephen S. Winters	Director, Basic Studies and Professor, Geology
1974	Robert O. Lawton	Special Assistant to the President and Professor, English
1975	Thomas G. Wright	Professor, Music
1976	Sara K. Srygley	Professor, Library Science
1977	Bernard F. Sliger	President
1978	Katherine B. Hoffman	Professor, Chemistry
1979	Sherrill W. Ragans	Director, Housing
1980	John J. Carey	Professor, Religion
1981	Daisy P. Flory	Dean of Faculties
1982	Richard G. Fallon	Dean and Professor, Theatre
1983	Bobby E. Leach	Vice President, Student Affairs
1984	Merrill B. Hintikka	Associate Professor, Philosophy
1985	Sandra W. Rackley	Associate Professor, Communication
1986	James A. Hayes	Dean of Students

Note: This award is presented each year by the Gold Key Honor Society to a faculty or staff member who has given distinguished service to students and the University.

Source: Media Relations Office

FULL-TIME EMPLOYEES BY JOB CATEGORY 1986-87



SOURCE: EEO6 Report

EXEMPLARY SERVICE AWARDS FOR CAREER SERVICE EMPLOYEES

1981-82:

Ms. S. Camille Johnson	Centrex
Mr. Charles Durbin	Athletic Dept.
Mr. Leonard Barnes	Nursing
Mr. Columbus Blake	Developmental Research School

1982-83:

Ms. Charlotte E. Glover	Women's Athletics
Ms. Willie M. Scott	Resident Student Development
Mr. William Derrenberger	Maintenance

1983-84:

Mr. Harry F. Dunlap	Biological Science
Mr. Edward Gaines	Housing
Ms. Mary M. Harris	Criminology
Mr. Steve L. Russell	Physical Plant

1984-85:

Mr. Obie D. Cordle	Resident Student Development
Ms. Linda H. Forsythe	Undergraduate Studies
Ms. Carol A. Heiman	Biological Sciences
Mr. Ben L. Thomas	Building Services

1985-86

Mr. Paul R. Ball	Public Safety
Mr. Bobby L. Barnette	Chemistry
Mr. Ira H. Sewell	Housing
Ms. Tina T. Southwick	Community College Relations
Mr. Donnie M. Woodall	Administrative Information Systems

Source: Office of the President



SUPPORT SERVICES



Public service, along with instruction and research, is one of the three primary missions of the Florida State University. Almost all university faculty and organizational units participate in this public service mission at some time; for some units, this is a primary assignment. Institutes and Research Centers are established to provide specific research, service, and instructional support to users and clients both within and outside the university community. The following list indicates the established Institutes and Research Centers by administrative area. This list of Institutes and Centers is accurate as of February 1, 1987.

President's Area

Center for Yugoslav-American Studies, Research, and Exchanges
Center for Economic Education

University Relations

WFSU-FM
WFSU-TV

Center for Professional Development and Public Service

Center for Professional Development and Public Service
Center for Intensive English Studies

Learning Systems Institute

Learning Systems Institute
Center for Educational Technology
Center for Needs Assessment and Planning
Center for Instructional Support
Center for International Studies

Institute of Science and Public Affairs

Institute of Government (SUS)
Institute of Science and Public Affairs
Florida Resources and Environmental Analysis Center
Center for Advancement of Procurement
Center for Employment Relations and Law
Environmental Hazards Center
Center for Biomedical and Toxicological Research
Florida Economic Forecasting Center
Florida State Climate Center
Family Services Center
Beaches and Shores Resource Center
Center for Aquatic Research and Resource Management
Center for Arts Administration
Hoyt Center for Land Economics and Real Estate
Florida Center for Public Management
Center for Productivity Improvement
Center for Comparative/Development Administration
Center for Human Services Policy and Administration

College of Arts and Sciences

Humanities Institute
Institute of Molecular Biophysics
Center for Cell Reproduction and Development
Center for the Humanities and the Arts
Center for the Study of Values
Statistical Consulting Center
Nuclear Services
Institute for Future Resources
Geophysical Fluid Dynamics Institute
Antarctic Research Facility
Southeast Archeological Center
Institute of Cognitive Sciences
Polar Desert Research Center
Center for Materials Research and Technology

College of Business

Institute for Business Research and Service:
Small Business Development Center
Small Business Institute
Center for Information Systems Research
Real Estate Research Center
Center for Insurance Research
Center for Applied Behavioral Research
Florida Economic Development Center
Center for Accounting Research
Center for Personnel and Industrial Relations Research
Center for Financial Analysis
Center for Banking and Financial Institutions

College of Communication

Communication Research Center
Institute of Motion Picture, Television, and Recording Arts
Speech and Hearing Clinic

College of Education

Florida State University Developmental Research School
Center for Multi-Campus Systems
Institute for Studies in Higher Education
State and Regional Higher Education Center
Center for Educational Research Evaluation Services
Center for the Studies of Women in Educational Management Systems
Educational Systems Planning Center
Institute of Departmental Leadership
Center for Instructional Development and Services
Social Studies Material Development Center for Greek Speaking Students
Teacher Education Center
Center for the Study of Technology in Counseling and Career Development
Center for the Study of Wellness

College of Home Economics

Center for Marriage and Family Therapy
Resource Materials Center

College of Law

Policy Studies Clinic
Dispute Resolution Clinic
Advanced Legal Studies

College of Social Sciences

Multi-disciplinary Center on Gerontology
Center for the Study of Population
Policy Sciences Center

School of Music

Center for Music Research
Center for Music of the Americas

School of Social Work

Social Work Training and Development Center

School of Theatre

Institute for Professional Theatre, Television and Film Training
Charles MacArthur Center for American Theatre

School of Visual Arts

Institute of Contemporary Art

Graduate Studies and Research

Laboratory Animal Resources Unit
Florida State University Marine Laboratory

Supercomputer Computations Research Institute

Supercomputer Computations Research Institute

FAMU/FSU College of Engineering/College of Arts and Sciences

Institute for Expert Systems and Robotics

Computer and Information Resources

Center for Color Graphics
Florida State University Computing Center

Source: Office of Vice President for Academic Affairs

UNIVERSITY LIBRARIES

The Robert Manning Strozier Library has volume holdings totaling over 1,600,000 books and periodicals, over 149,000 maps, and over 560,000 government documents. Bibliographic subject searches are available as well as access to many data bases in the sciences and social sciences. The Micro-materials Center includes over 2,700,000 microforms including film, cards, print, and fiche. The Library's online catalog includes materials from Florida State University and the other eight state university system Libraries.

Branches of the library include: the Warren D. Allen Music Library, located in the School of Music, which contains a collection of records and scores in addition to books and periodicals and located in the School of Library and Information Studies Building, the Harold Goldstein Library School Library, which contains books and periodicals as well as films, audio tapes, and microforms. The completion of the Science Center Library is scheduled for summer, 1987. The Law Library, located in a new building connected to the College of Law and operated under the auspices of the College of Law, contains over 154,000 volumes and over 456,000 microform volume equivalents.

The total staffing for the library system is 152.5 FTE. Of these, 56 are professional librarians.

	<u>1982-1983</u>	<u>1983-1984</u>	<u>1984-1985</u>	<u>1985-1986*</u>
Volumes in Library	1,448,753	1,478,254	1,626,574	1,624,138
Volumes Added (net)	35,140	29,501	39,333	45,541
Total Microforms	2,388,395	2,482,300	2,570,158	2,792,209
Periodicals and Serials Subscriptions	15,935	20,686	22,136	17,233
Staff Salaries (including Student Assistants)	\$2,116,975	\$2,477,870	\$2,712,490	\$2,824,028
Expenditures for Books and Related Materials	\$1,723,455	\$1,465,151	\$2,145,212	\$2,674,535
Binding	\$90,202	\$80,503	\$151,373	\$127,098
Other Operating Expenditures	\$244,699	\$283,790	\$304,845	\$326,190
Per Student Total Operating Expenditures	\$187.51	\$198.69	\$249.25	\$260.12
Library Expenditures as a Percentage of University Totals (% of E&G)	4.09	3.97	4.19	4.50

* In 1985/86, a new method of counting library holdings based upon the American National Standard for library and information sciences and related publishing practices - library statistics, was adopted by the Florida Board of Regents. Consequently, statistics prior to 1985-86 are not comparable to those for 1985-86 and later years.

NOTE: Periodicals and serials are currently on standing order. Law Library figures are included.

Source: Strozier Library

The Center for Professional Development and Public Service is the University's central support unit for continuing education and other educational outreach activities offered on behalf of the University. The Center's mission is to bring together outstanding resources from the University and beyond to meet current and evolving learning needs of individuals and organizations in Florida and the nation. The Center provides a system of integrated services to program sponsors and clients, including technical assistance, consultation, needs assessment, and a full range of program development, meeting management, and evaluation services.

The Center administers all non-credit continuing education programs which are offered on the campus or in off-campus locations convenient to participants. The Center also administers all off-campus credit courses and degree programs, and credit institutes which may be conducted either on or off-campus. For non-credit programs, the Center provides, on a fee-for-service basis, essential services to program sponsors and participants, as well as a complete range of optional program development and management services, and other technical assistance which program sponsors may request. Similar services are available to sponsoring academic units and participating faculty for the design and delivery of off-campus credit programs and other credit activities which fall within the Center's area of responsibility. The Center maintains an Office of Continuing Education on the Panama City Campus to administer programs in that area.

The Center operates, for the University, the Florida State Conference Center, which provides the University and the State of Florida with a specially designed facility for hosting educational conferences, meetings, workshops, and related activities. The Center also operates the Wakulla Springs Lodge and Conference Center located in the Edward Ball Wakulla Springs State Park 15 miles south of Tallahassee. In addition to operating these Conference Centers, the Center for Professional Development and Public Service has a staff of experienced conference consultants available to help in conference planning and management. This facility enhances the University's capabilities and resources to meet the expanding market for professional conference and meeting management services.

The Florida State Conference Center is now capable of C Band Teleconferencing, and will soon add Ku Band Teleconferencing. It is equipped with video and speaker feeds in all rooms, has two Darome units, redundant equipment, 21-inch monitors and four-foot projection screens. As a member of National University Teleconferencing Network (NUTN) the center has access to all DomSats and has conducted a number of teleconferences for the past two years.

Through its Continuing Studies Unit, the Center provided administrative support for 688 credit offerings in 1985-86, including regular credit courses, credit institutes, and special summer workshops conducted in: Florida; London and Oxford, England; and Florence, Italy.

Source: The Center for Professional Development and Public Service

THE CENTER FOR PROFESSIONAL DEVELOPMENT AND PUBLIC SERVICE
INSTRUCTIONAL ACTIVITIES

<u>NON-CREDIT</u>	<u>1982-83</u>	<u>1983-84</u>	<u>1984-85</u>	<u>1985-86</u>
Programs Conducted	789	766	940	1,077
Number of Participants	31,933	30,506	47,230	54,900
Continuing Education Units (CEUs) Generated*	37,831	57,802	66,132	89,820
Total Instructional Hours	378,310	578,020	661,322	898,200
 <u>CREDIT</u>				
Off-Campus Credit Courses Conducted	272	328	597	688
Number of Registrations	4,410	4,037	5,835	5,769
Total Student Credit Hours	11,790	9,343	11,317	14,066

* Both individual and institutional CEUs

Note: CEU is the nationally recognized, standard unit of measurement for participation in non-credit continuing education.

Source: The Center for Professional Development and Public Service

CREDIT COURSES OFFERED BY FLORIDA COUNTY, 1985-86

<u>COUNTY</u>	<u>TOTAL</u>
Alachua	10
Bay	4
Columbia	3
Dade	9
Duval	10
Escambia	22
Gadsden	1
Hillsborough	7
Jackson	1
Leon	172
Leon Co-Listed	340
Orange	39
Palm Beach	5
Sarasota	3
St. Johns	1
Other (overseas or out of state)	61
TOTAL	688

CREDIT COURSES OFFERED BY COLLEGE OR SCHOOL, 1985-86

<u>COLLEGE OR SCHOOL</u>	<u>NUMBER OF CREDIT COURSES</u>
Arts and Sciences	88
Business	7
Communication	8
Criminology	7
Education	325
Home Economics	11
Law	6
Library and Information Studies	27
Music	20
Nursing	4
Social Sciences	64
Social Work	79
Theatre	19
Visual Arts	23
TOTAL	688

Source: The Center for Professional Development and Public Service

THE CENTER FOR PROFESSIONAL DEVELOPMENT AND PUBLIC SERVICE
DEGREE PROGRAMS OFFERED

<u>SCHOOL/COLLEGE AND MAJOR</u>	<u>DEGREE</u>	<u>LOCATION</u>
<u>School of Criminology</u>		
Criminology	MS	Tallahassee *
<u>College of Education</u>		
Adult Education	EdD	Miami
Educational Administration	EdD	Panama City
Educational Administration	EdD	Pensacola
Health Education	BS	Tallahassee *
Health Education	MS	Tallahassee *
Higher Education	EdD	Pensacola
Multilingual/Multicultural Education	MS	Saudi Arabia
Reading Education	MS	Lake City
<u>College of Home Economics</u>		
Home Economics Education	MS	Orlando
<u>School of Library and Information Studies</u>		
Library Science	MLS	Jacksonville
Library Science	MLS	Miami
Library Science	MLS	Gainesville
<u>College of Social Sciences</u>		
Public Administration	MPA	Tallahassee *
Public Administration	Certificate	Tallahassee *
Urban and Regional Planning	MSP	Orlando
Urban and Regional Planning	MSP	Tampa
<u>School of Social Work</u>		
Social Work	MSW	Gainesville
Social Work	MSW	Jacksonville
Social Work	MSW	Orlando
Social Work	MSW	Tallahassee *
Social Work	MSW	Pensacola

* denotes co-listed program

Source: The Center for Professional Development and Public Service

The Supercomputer Computations Research Institute (SCRI) is an interdisciplinary program set up to do research in computational science, train researchers from various academic disciplines and provide them access to a supercomputer. This is accomplished by gathering together active researchers in science, engineering, mathematics, and computer science who are currently supercomputer users. Their interactions and exchange of ideas enhance research in the various disciplines, and can lead to the discovery and propagation of new computational techniques.

Authorized by Congress and initiated in 1984, this program was a response to the need to upgrade research in fields which require large-scale computers in universities throughout the U.S. It was established at Florida State University as a cooperative venture between Florida State University and the U.S. Department of Energy's, Office of Energy Research, Control Data Corporation, and ETA Systems, Inc. of St. Paul, Minnesota, and the State of Florida.

As of March 1985, a CYBER 205 with four-million words of memory and two pipes, accompanied by 12 units of on-line disc storage with 7.2 gigabytes and four on-line tape drives is available for use. It has a secondary file storage of 20 gigabytes implemented by a CDC CYBER 835 acting as a file server. Located off campus at the Tallahassee research park, the CYBER 205 is connected by a coax cable to the CYBER 760, the on-campus front-end computer.

In January 1987 the Institute became the nation's first recipient of the ETA-10 Supercomputer, which consists of four CPU's with four million words of local memory each and a cycle time three to five times faster than the CYBER 205. The CPU's will be accompanied by 128 million words of shared memory.

The SCRI is a 50 plus member body of application research scientists, visiting scientists, technicians, software specialists and administrative personnel. About 65 percent of the Institute's annual budget of approximately \$10 million is provided by the Office of Energy Research. Florida State University and the State of Florida contribute roughly 25% of the budget, while Control Data Corporation and ETA Systems, Inc. contribute about 10 percent.

Software projects in progress/planning include: a CYBER timesharing system (like the CTSS system at Livermore), research on vectorization techniques, vectorizer compiler development, techniques and tools for multiprocessing, vectorized and parallelized numerical methods and algorithms, fast partial differential equation solvers, and the establishment of DOE user libraries for supercomputers.

Research projects in progress/planning by SCRI scientists include: lattice gauge theory, data processing for high energy experimental particle physics, accelerator design, many-body problems, Monte Carlo techniques, event simulation, meteorology, oceanography, geophysical fluid dynamics, computational fluid dynamics, symbolic manipulation programs, materials by design, and molecular dynamics.

The Institute arranges various forums for discussion, such as workshops and conferences, and offers some visiting appointments for scientists and postdoctoral research associates to participate in the SCRI research program. Scientists interested in participating in the SCRI program or desiring access to its supercomputer resources should write to: Supercomputer Computations Research Institute, The Florida State University, Tallahassee, Florida 32306. Telephone (904) 644-1010.

Source: Supercomputer Computations Research Institute.

STUDENT AFFAIRS

The Division of Student Affairs provides a wide variety of services and programs to serve students' needs and to help them accomplish their educational and personal goals. These programs contribute to and support the formal academic program and enrich students' out-of-class experiences. The philosophy underlying the Student Affairs program is developmental in nature, promoting the socio-psychological growth of the total person. The program's goal is the development of each student into a self-reliant, self-actualizing person.

Specifically, the division's programs seek to:

- create an environment conducive to the growth of the individual student regardless of his/her background
- assist in the student's search for identity
- aid in the development of his/her academic and vocational goals
- encourage the formation of positive values
- assure that the student's needs are met through counseling, programs, and services.

This approach requires campus-wide cooperation and participation in the development, implementation, and evaluation of the division's programs and services.

Division of Student Affairs Offices and Programs

<u>Office</u>	<u>Services/Programs</u>
Office of the Vice President for Student Affairs	Administration and management of the Student Affairs area's activities budgets, other personnel services, counseling and advising for minority students
Campus Recreation	Intramurals Seminole Reservation recreational facility Bim Stults Aquatic Center Tully & Montgomery Gymnasium Outdoor Pursuits
Career Development Services	Curricular/Career Information Services Cooperative Education Program Placement
Residence Student Development	On-campus housing and programming for resident single and married students Educational Research Center for Child Development
Special Programs	Provides federally sponsored and University-sponsored classes and services for academically and culturally disadvantaged students

STUDENT AFFAIRS

Student Counseling Center	Provides counseling and psychotherapy programs and services
Student Development	New Student Orientation Program Student Leadership Program Campus Alcohol and Drug Information Center Fraternity and sorority advisement Student organization registration Minority student programming Student Judicial System Provides programs and services for: International students Disabled students Veterans Women Students Minority Students Nontraditional students
Student Government	Provides direct student services through the following agencies: Black Student Union Center for Participant Education Greek Council Inter-Residence Hall Council Jewish Student Union Off-Campus Housing Office Student Alert Force and Escort Service Student Employment Services Student Helping Hands Student Legal Services Video Center Women's Center
Student Health Center	Provides ambulatory medical care
University Union	Student Campus Entertainment Union Ticket Office Space Reservations Meeting rooms Game Room T.V. Lounge Information Desk Provides space for Book Store, Union Store, Post Office, food facilities, a banking facility, copy center, and travel agency.

Source: The Office of Student Affairs

The following is a list of informative and significant publications of The Florida State University. It is by no means complete or comprehensive, but represents a sampling of the professional publications of the university as well as a description of some of the informative publications which present detailed information about the university, its programs, and procedures.

GENERAL PUBLICATIONS

The Florida State University Bulletin is published annually by the Publications Office to provide comprehensive information on the university, including current curricula, educational plans, offerings, and requirements.

The Florida State University Student Handbook is published annually by the Publications Office to make the student conduct code available to the student body and to disseminate information about FSU. It includes history highlights, responsibilities and rights of students, rules and regulations of the university, and other general information.

Directory of Classes provides information on each academic term's class offerings and registration procedures.

FSU Traffic and Parking Rules and Regulations provides current rules and regulations for parking vehicles on the campus.

Seminole Guide - FSU Faculty/Staff/Student Directory contains directory information (office locations, addresses, phone numbers) on faculty, staff, and students.

FSU Fact Book annually provides a general description of the activities of the university, including information on students, faculty and staff, support services, and fiscal matters.

Faculty Handbook contains an overview of the administrative procedures used in university governance as well as information on benefits and the rights and responsibilities of faculty members.

FSU Constitution, also included in the Faculty Handbook, includes the Constitution document and its bylaws used for governing the University.

FSU Bulletin: Research in Review, published five times a year, reports on and interprets research activities at the University.

Florida State is a magazine published by the university's Alumni Association to provide information on alumni and their activities.

Holopaw, The Orientation Magazine provides orientation information for new students and their parents.

State: Florida State University Faculty/Staff Bulletin is published biweekly throughout the year by the Media Relations Office to provide official notices to faculty and staff.

FSU Reports is published quarterly by the Media Relations Office to update alumni and parents of undergraduate students on current research and activities at FSU.

AREA SPECIFIC JOURNALS, REVIEWS, AND ATLASES

FSU Law Review - quarterly; information of a legal and scholarly nature.

Water Resources Atlas of Florida - comprehensive volume of Florida's freshwater resources.

Resource Atlas of Apalachicola Estuary - atlas published by the Department of Biological Science.

Florida Vocational Journal - bimonthly; to provide educators with an information dissemination and exchange system for vocational education.

Open Entries - quarterly; to provide educators with an information system for exchange of competency-based instructional materials and methodology.

Research in Review - quarterly; to inform the public and other universities' officials of FSU's scholarly activities and their relevance to taxpayers, commerce, and academe.

Social Theory and Practice - three times a year; articles on social and political philosophy.

Proceedings and Reports - annual; summaries and proceedings of seminars sponsored by Center for Yugoslav-American Studies, Research, and Exchanges.

INTERCOLLEGIATE ATHLETICS

The Florida State University sponsors teams representing the university in sixteen intercollegiate sports for men and women; eight teams currently compete in varsity athletic competition for both men and women. The official designations of these teams are "Seminoles" for the men's teams, and "Lady Seminoles" for the women's teams. The current competitive intercollegiate sports and their coaches are listed below.

DIRECTOR OF ATHLETICS--CECIL W. (HOOTIE) INGRAM, JR.
ASSOCIATE DIRECTOR OF INTERCOLLEGIATE ATHLETICS--BOB GOIN
ASSISTANT DIRECTOR FOR WOMEN'S SPORTS--DR. JAN STOCKER

MEN'S SPORTS

Sport

*Baseball
*Basketball
*Cross Country
Football
*Golf
*Swimming
*Tennis
*Track



Head Coach

Mike Martin
Pat Kennedy
Al Schmidt
Bobby Bowden
Verlyn Giles
Bill Shults
Richard McKee
Terry Long

WOMEN'S SPORTS

Sport

*Basketball
*Cross Country
*Golf
Softball
*Swimming
*Tennis
*Track
*Volleyball



Head Coach

Marynell Meadors
Al Schmidt
Verlyn Giles
JoAnn Graf
Terry Maul
Anne Rizza
Terry Long
Cecile Reynaud

(*) Denotes competition sport in the Metro Athletic Conference.

Source: Florida State University Sports Information Office

GLOSSARY

Academic Year -- The time period containing the academic sessions held during consecutive Fall and Spring semesters (currently August through April)

Administrative and Professional (A&P) -- A Board of Regents pay plan for middle and upper level administrative and professional positions in the State University System.

Board of Regents (BOR) -- A 13-member state board which governs the State University System (SUS). It is composed of the Commissioner of Education (ex officio), the chancellor of the SUS, 12 Florida citizens appointed by the Governor to nine-year terms, and one SUS student appointed annually.

CIP (Classification of Instruction Programs) Discipline Code -- These codes represent a nationally used, common taxonomy for the classification of higher education degree programs. The CIP classification describes content of the programs at three levels with each providing varying levels of detail.

Common Course Numbering System -- A statewide system of prefixes and numbers for courses developed in 1978 for all postsecondary and participating private institutions in Florida. Its purpose is to make transferring easier by identifying equivalent courses, all of which carry the same prefix and last three digits, although the title of the course may vary at different institutions.

Contracts and Grants (C&G) Budget -- A budget entity which deals primarily with sponsored research activities and federally funded educational grants.

Educational and General (E&G) Budget -- A budget entity which provides instructional programs leading to formal degrees, and for research and public service programs.

Faculty -- A person appointed to a position defined by the Board of Regents Personnel Classification system as faculty; categories include Professor, Associate Professor, Assistant Professor, and Instructor. Occupation Code ranges for traditional University faculty positions are from 9001-9015, 9020-9110, and 9115-9179. The collective bargaining agreement currently in force includes in the faculty population all Developmental Research School (university lab school) personnel, all University Librarian classifications, staff physicists, and the President.

Fiscal Year -- A 12-month period running from July 1 through the following June 30.

Florida Endowment Trust Fund for Eminent Scholars -- The Trust Fund established in the State Treasury for Eminent Scholars provides the opportunity to each state university to match and receive challenge grants to create endowments for selected eminent scholars to occupy Chairs within the university.

Full-time Equivalent (FTE) Student Calculation Factors -- Under the semester system, the factors for calculating the number of student FTE's generated are as follows:

Fall and

Spring Terms: 15 undergraduate student credit hours equal 1 FTE;

12 graduate student credit hours equal 1 FTE.

Summer Term: 10 undergraduate student credit hours equal 1 FTE;

8 graduate student credit hours equal 1 FTE

Full-time Equivalent (FTE) Employee -- A numerical designator for an appointment based on 100% for full time. An FTE for a full-time employee is 1.00. (Two people each serving in half-time faculty positions would equal, together, one FTE faculty position.)

Full-time Equivalent (FTE) Student -- A measure of student enrollment based on the number of student credit hours for which students enroll. Twelve to fifteen semester credit hours equal one student FTE at the undergraduate level; twelve semester credit hours equal one student FTE at the graduate level.

Full-Time Filled Position -- A position in which a person or persons are appointed at a total FTE of 1.00.

Major Code -- A six-digit number assigned to an area of study designated as the student's major field. (The diploma given by the university indicates the degree awarded and the Board of Regents approved degree program.)

Major Field of Study -- Students are classified as majors according to their selection of a primary field of study. This field must be selected from BOR approved degree programs and university approved majors within each degree program.

Occupation Code -- A four-digit code which indicates the title and general description of the position to which a person is appointed. Occupation codes range from 0001 to 9179 and 9200 to 9499 for regular salaried positions. The range 9180-9199 is reserved for student related titles. Graduate assistants, post doctorates and fellows are appointed to classifications within this range. All codes within this latter range are paid through OPS funds. Faculty, A&P and USPS may be appointed on OPS in the entire range of occupation codes; this, however, is limited primarily to faculty appointments.

Operating Budget -- An expenditure plan developed for each fiscal year. The plan must conform to the annual allocation/appropriation and list estimated expenditures by budget category for the year.

Other Personal Services (OPS) -- This is one of two sources of salary funds. Persons paid from OPS are performing temporary work of some nature. There is no continuing obligation on the part of the state toward persons on OPS appointments.

Preliminary Headcount Enrollment -- These figures represent all students regardless of fee classification, i.e., the number of courses in which they are enrolled.

State Fundable Student Credit Hours (SFSCH) -- Those student credit hours for which the University receives funding by the state. Not all student credit hours are fundable -- specifically, credit hours produced by some waivers of fees are not state fundable.

Lower Level SCH: Hours generated by courses numbered 2999 and below.

Upper Level SCH: Hours generated by courses numbered 3000-4999.

Graduate Level SCH: Hours generated by courses numbered 5000 and above, except thesis and dissertation courses.

Thesis: Hours generated by courses numbered 5971.

Dissertation: Hours generated by courses numbered 6980.

Student -- A person who has indicated a desire to be associated with an academic program of the University in an officially recognized capacity.

Student Classification Level (from Student Data Course File) --

- Lower Division: A student who has earned fewer than 60 semester credit hours (90 quarter hours).
- Upper Division: A student who has earned 60 semester credit hours (90 or more quarter hours); or has an AA degree, or is working toward an additional bachelor's degree.
- Beginning Graduate: A graduate student who has been formally admitted to a graduate degree program but who is not an advanced graduate student.
- Advanced Graduate: A graduate student who has been formally admitted to a recognized doctoral or post-masters degree program and who has accumulated 36 semester credit hours (54 or more quarter hours) toward his/her degree program, or has a master's degree.
- Unclassified: A student waiting to be admitted to a degree program, or not seeking a degree.

Student Course Loads (FSU Bulletin) -- Students are classified on the basis of semester hours earned as follows:

- Freshmen Zero to 30 semester hours (0-35 quarter hours)
- Sophomore 30 to 59 semester hours (minimum of 36 quarter hours)
- Junior 60 to 89 semester hours and all lower division requirements (a minimum of 84 quarter hours).
- Senior 90 semester hours (minimum of 132 quarter hours)
- Graduate Any student admitted to a graduate program
- Unclassified Any student not yet admitted to a degree program, including:
 Special Non-Degree Seeking without Baccalaureate Degree
 Special Non-Degree Seeking with Baccalaureate Degree
 Provisional
 Transient
 High School Students

Student Data Course File -- An automated file prepared each term which lists specific data on all students and student enrollments.

Student Headcount Enrollment -- The actual number of individual students enrolled at a specified time regardless of whether the students are attending full-time or part-time.

Tenure -- The condition attained by a faculty member through highly competent scholarly activities which assures the faculty member security of employment and immunity from reprisals or threats due to an intellectual position or belief which may be unpopular, and which guarantees annual reappointment for that faculty member until voluntary resignation, retirement, or removal for adequate cause.

University Support Personnel System -- A Board of Regents pay plan and personnel system for classified employees within the State University System of Florida

This public document was promulgated at an annual cost of \$3,282.56 or \$6.57 per copy for the purpose of dissemination of information about The Florida State University.

NON-CIRCULATING
NOT TO BE TAKEN FROM THIS ROOM

